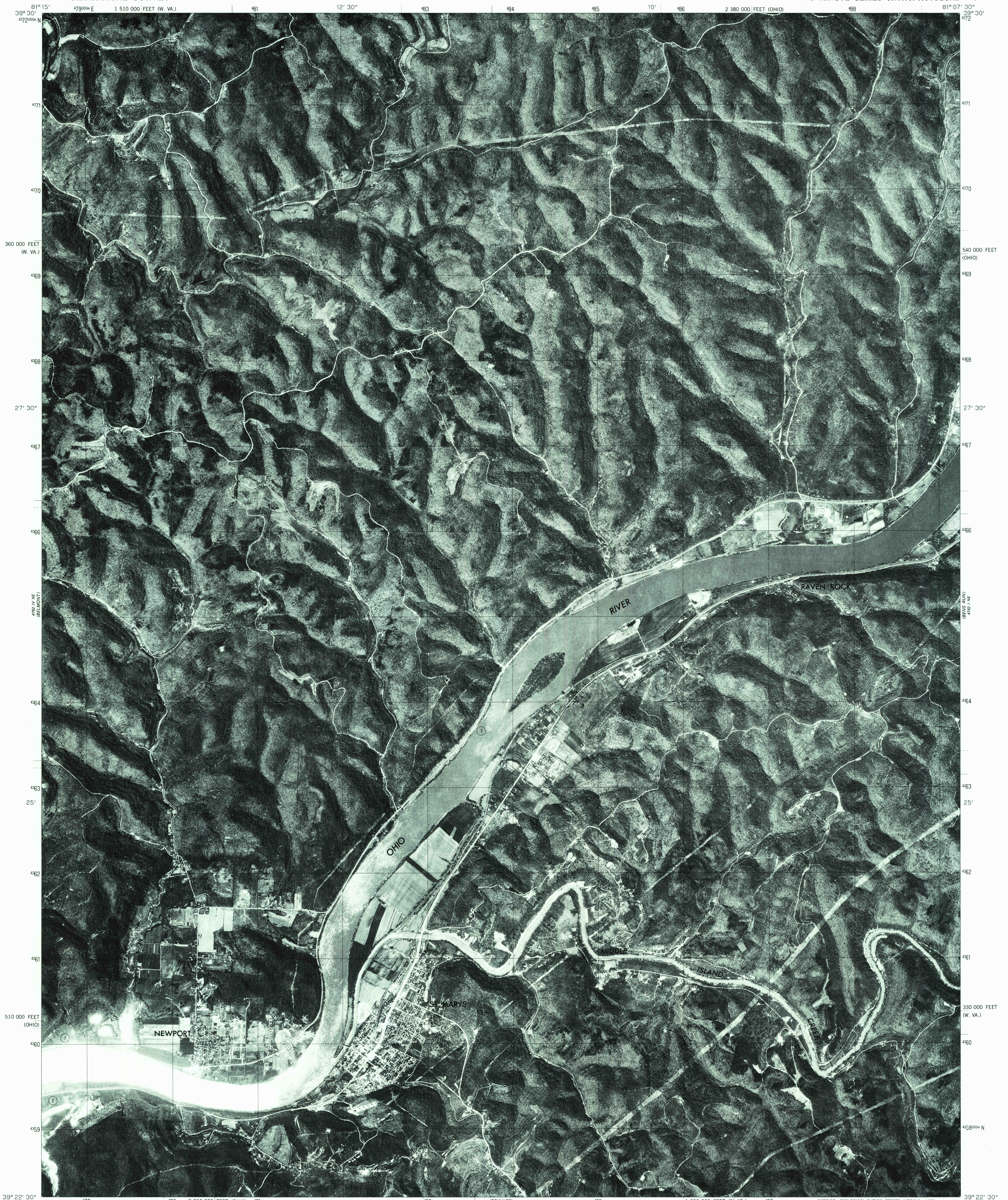
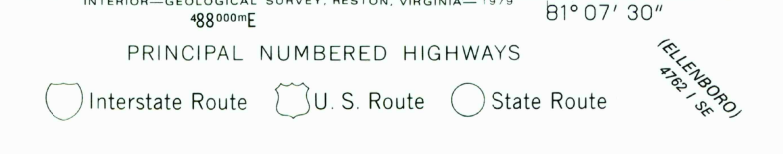
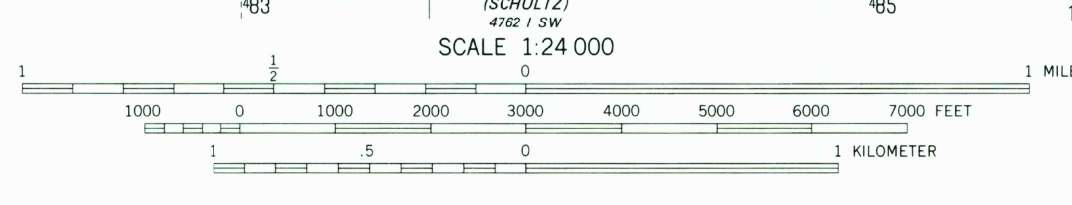
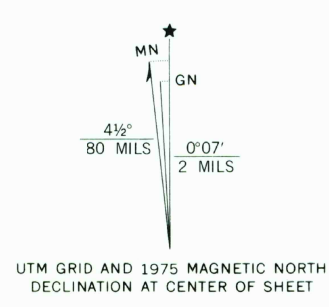


AMS 4761 58  
(NEW MATRICES)



Produced and published by the Geological Survey  
in cooperation with the Soil Conservation Service  
Orthophoto produced from 1:76,000-scale  
aerial photograph taken May 2, 1975  
Projection: Ohio coordinate system  
(Lambert conformal conic)  
10,000-foot grid ticks based on Ohio coordinate system  
south zone, and West Virginia coordinate system, north zone  
1000-meter Universal Transverse Mercator grid,  
zone 17. 1927 North American datum  
Photomage rectified by automatic correlation



This quadrangle area also covered by  
1:24,000-scale topographic map  
RAVEN ROCK, W. VA.-OHIO  
N3922.5-W8107.5/7.5  
1975  
AMS 4761 1 NW-SERIES Y062

THIS MAP COMPLIES WITH NATIONAL MAP ACCURACY STANDARDS  
FOR SALE BY U. S. GEOLOGICAL SURVEY, RESTON, VIRGINIA 22092

USGS  
Historical File  
Topographic Division

APR 14 1978  
900