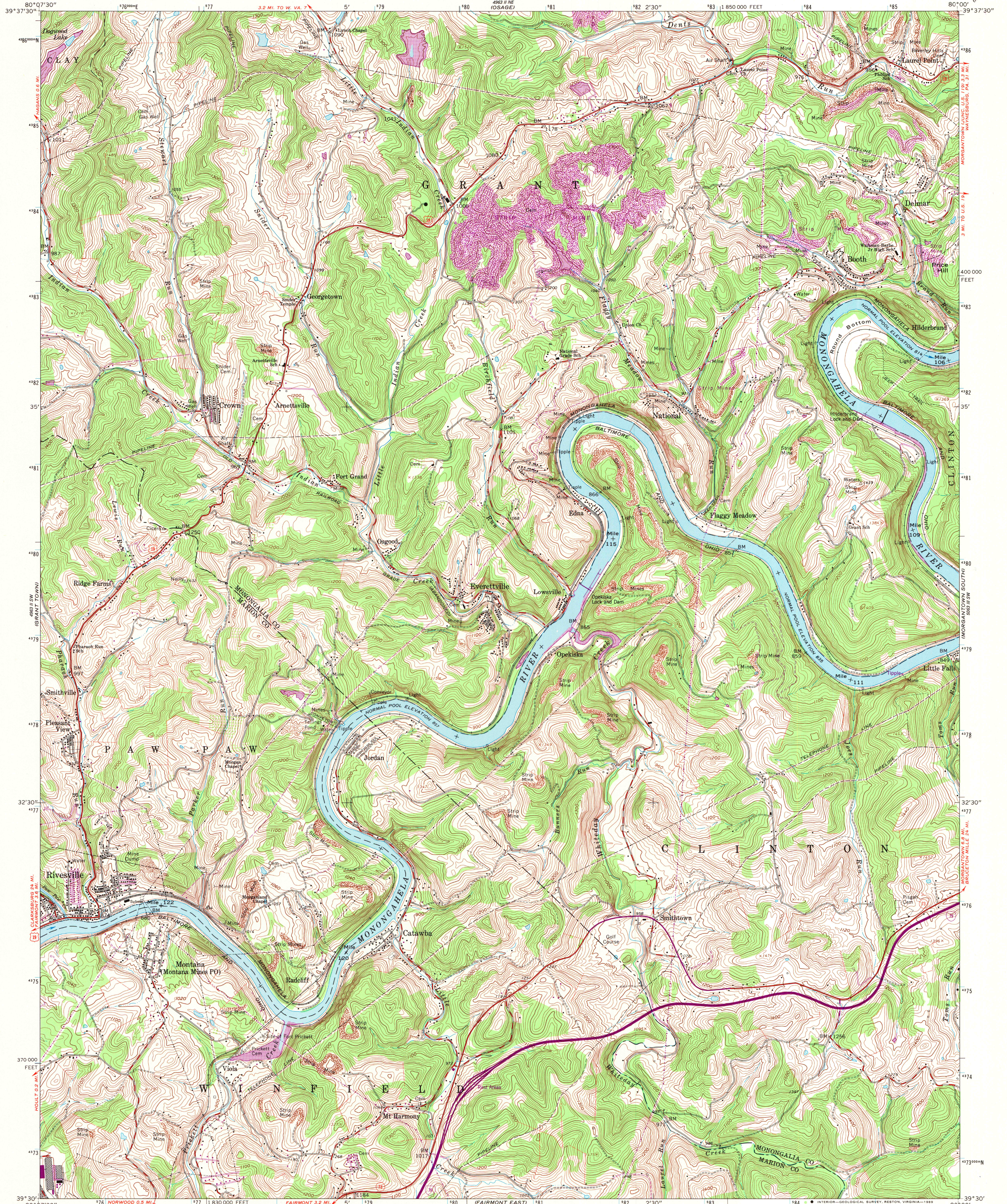
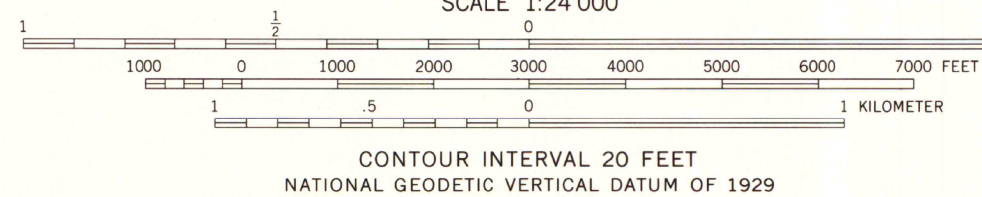
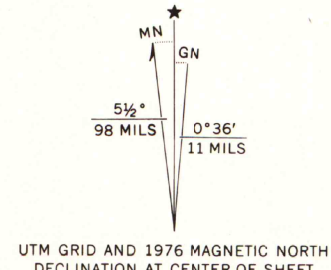


UNITED STATES
DEPARTMENT OF THE INTERIOR
GEOLOGICAL SURVEY

RIVESVILLE QUADRANGLE
WEST VIRGINIA
7.5 MINUTE SERIES (TOPOGRAPHIC)
SE/4 BLACKSVILLE 15' QUADRANGLE



Mapped, edited, and published by the Geological Survey
Control by USGS and USC&GS
Topography by photogrammetric methods from aerial
photographs taken 1957. Field checked 1960
Polyconic projection. 1927 North American datum
10,000-foot grid based on West Virginia coordinate system,
north zone
1000-meter Universal Transverse Mercator grid ticks,
zone 17, shown in blue
Fine red dashed lines indicate selected fence and field lines where
generally visible on aerial photographs. This information is unchecked
Revisions shown in purple compiled from aerial photographs
taken 1976. This information not field checked



THIS MAP COMPLIES WITH NATIONAL MAP ACCURACY STANDARDS
FOR SALE BY U. S. GEOLOGICAL SURVEY
DENVER, COLORADO 80225, OR RESTON, VIRGINIA 22092
A FOLDER DESCRIBING TOPOGRAPHIC MAPS AND SYMBOLS IS AVAILABLE ON REQUEST

U.S. Regional
Depository Copy
DO NOT DISCARD



To place on the predicted North American Datum 1983,
move the projection lines 6 meters south and
18 meters west as shown by dashed corner ticks

ROAD CLASSIFICATION
Heavy-duty ——— Light-duty ———
Medium-duty ——— Unimproved dirt ———
U. S. Route ——— State Route ———
Interstate Route ———

A.H. ROBINSON
MAP LIBRARY
APR 26 1989
RIVESVILLE, W. VA.
SE/4 BLACKSVILLE 15' QUADRANGLE
39080-E1-TF-024

University of Wisconsin
Madison
1960
PHOTOREVISED 1976
DMA 4963 II SE-SERIES V854