

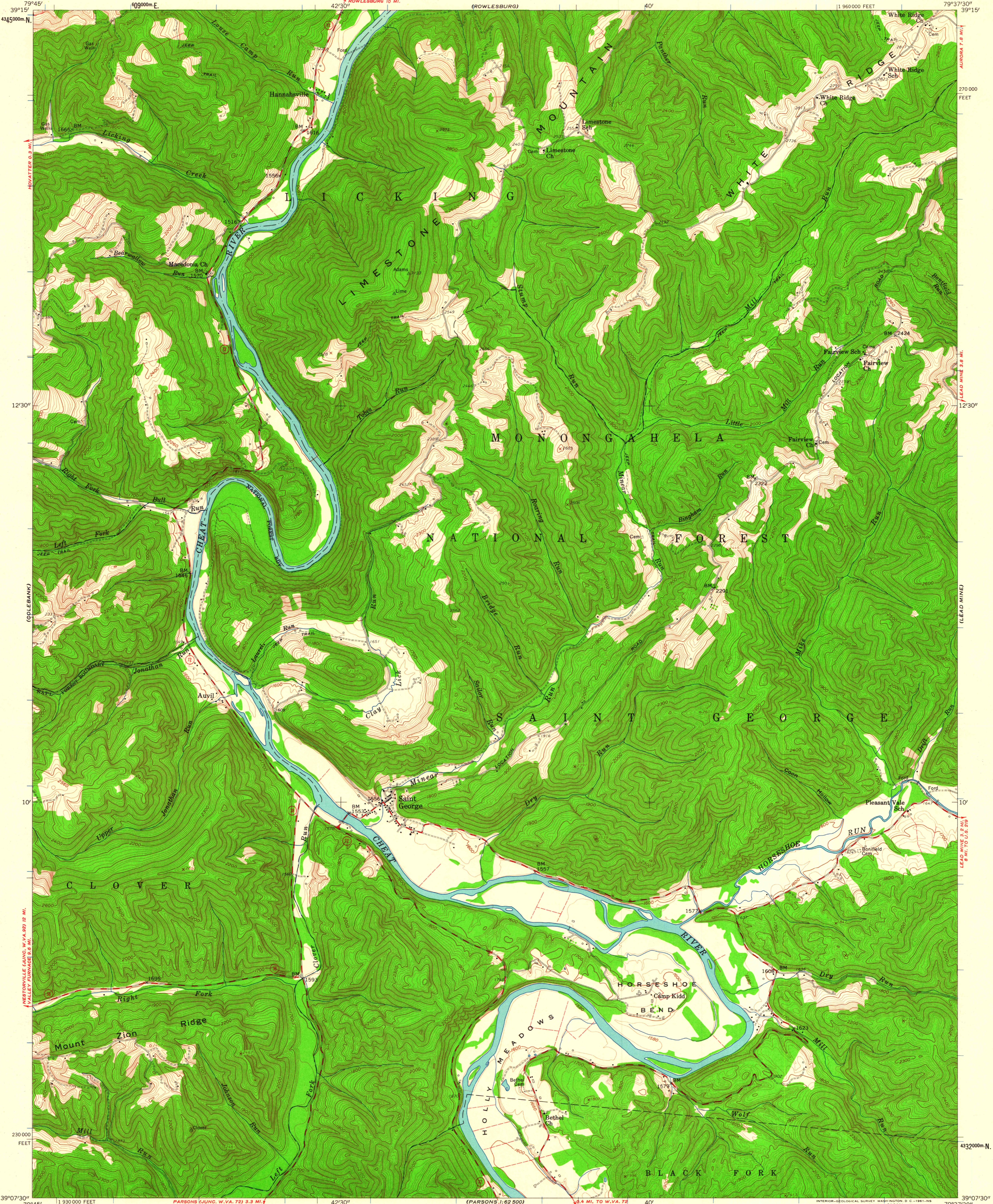
(FELLOWVILLE)

UNITED STATES  
DEPARTMENT OF THE INTERIOR  
GEOLOGICAL SURVEY

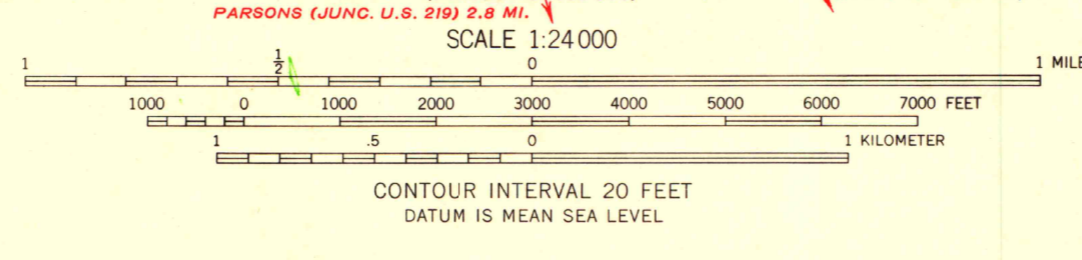
STATE OF WEST VIRGINIA  
REPRESENTED BY THE  
STATE OF WEST VIRGINIA GEOLOGICAL SURVEY  
AND OTHER STATE AGENCIES

SAINT GEORGE QUADRANGLE  
WEST VIRGINIA—TUCKER CO.  
7.5 MINUTE SERIES (TOPOGRAPHIC)  
NW/4 PARSONS 15' QUADRANGLE

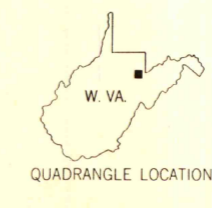
(AURORA)



Mapped, edited, and published by the Geological Survey  
Control by USGS and USC&GS  
Topography from aerial photographs by photogrammetric methods  
Aerial photographs taken 1957. Field check 1959  
Polyconic projection. 1927 North American datum  
10,000-foot grid based on West Virginia coordinate system,  
north zone  
1000-meter Universal Transverse Mercator grid ticks,  
zone 17, shown in blue  
Fine red dashed lines indicate selected fence and field lines where  
generally visible on aerial photographs. This information is unchecked



ROAD CLASSIFICATION  
Medium-duty ——— Light-duty ———  
Unimproved dirt - - - - -  
State Route ○



MAP AND AIR PHOTO LIBRARY  
University of Wisconsin

SAINT GEORGE, W. VA.  
NW/4 PARSONS 15' QUADRANGLE  
N 3907.5 - W 7937.5 / 7.5  
1959

THIS MAP COMPLIES WITH NATIONAL MAP ACCURACY STANDARDS  
FOR SALE BY U. S. GEOLOGICAL SURVEY, WASHINGTON 25, D. C.  
A FOLDER DESCRIBING TOPOGRAPHIC MAPS AND SYMBOLS IS AVAILABLE ON REQUEST