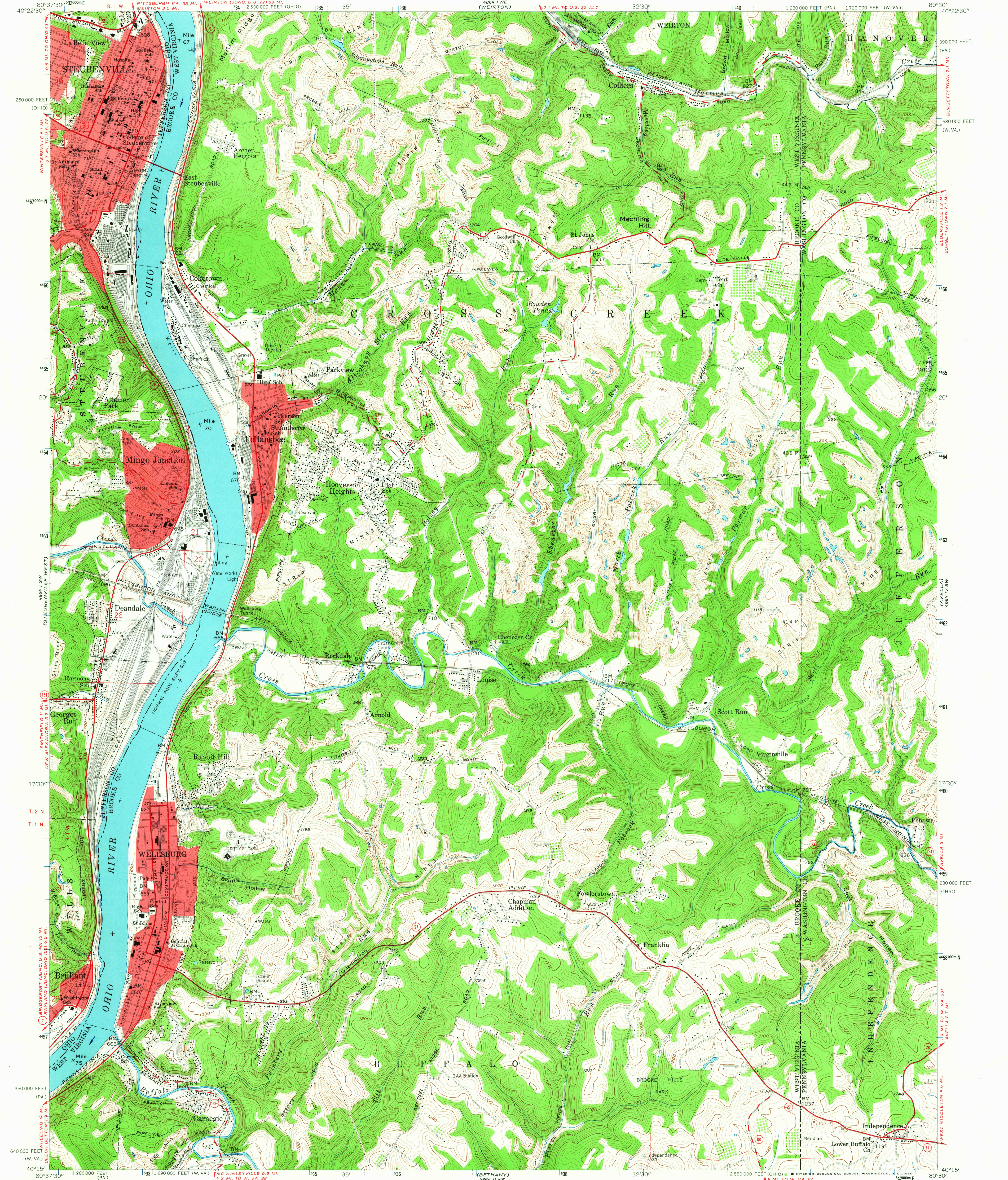


UNITED STATES
DEPARTMENT OF THE INTERIOR
GEOLOGICAL SURVEY

STEUBENVILLE EAST QUADRANGLE
WEST VIRGINIA-PENNSYLVANIA-OHIO
7.5 MINUTE SERIES (TOPOGRAPHIC)
SE/4 STEUBENVILLE 15' QUADRANGLE



Mapped, edited, and published by the Geological Survey

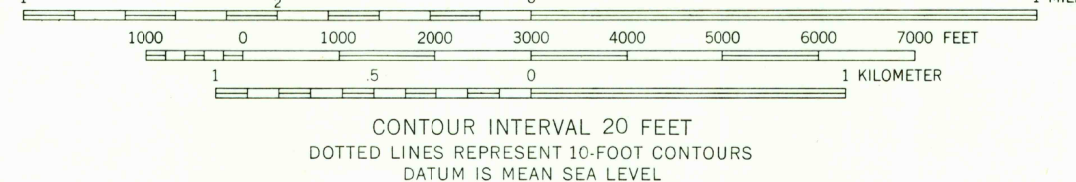
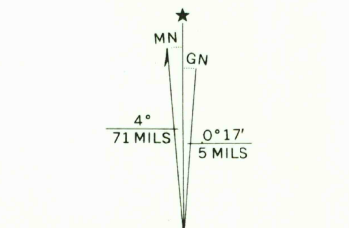
Control by USGS, USC&GS, and USCE

Topography from aerial photographs by photogrammetric methods

Aerial photographs taken 1954. Field check 1958

Polyconic projection. 1927 North American datum
10,000-foot grid based on West Virginia coordinate system, north zone,
Pennsylvania coordinate system, south zone, and Ohio coordinate system,
north zone. 1000-meter Universal Transverse Mercator grid ticks,
zone 17, shown in blue

Fine red dashed lines indicate selected fence and field lines
visible on aerial photographs. This information is unchecked
Red tint indicates area in which only landmark buildings are shown
The state boundary as shown represents the approximate position of the
low waterline as determined from U.S. Corps of Engineers, Ohio River
charts, surveyed 1913, and supplementary information
Land lines based on Ohio River Base. Unlabeled wells are oil wells
Unchecked elevations are shown in brown



ROAD CLASSIFICATION	
Heavy-duty	Light-duty
Medium-duty	Unimproved dirt
U.S. Route	State Route

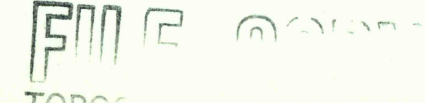
STEUBENVILLE EAST, W. VA.—PA.—OHIO
SE/4 STEUBENVILLE 15' QUADRANGLE
N4015—W8030/7.5

1958

AMS 4864 I SE-SERIES V854



U.S.G.S.



4000
JUL 26 1966