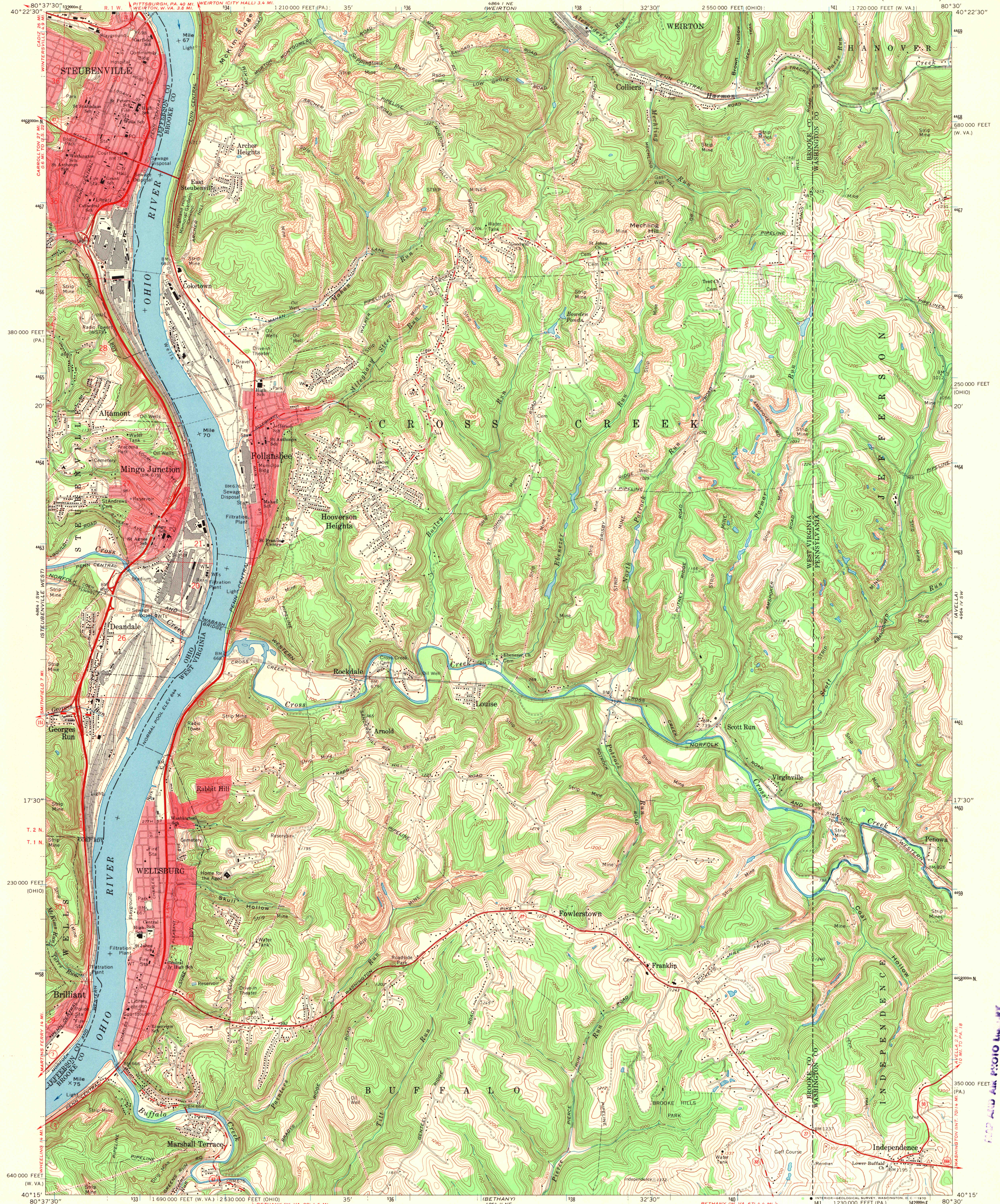
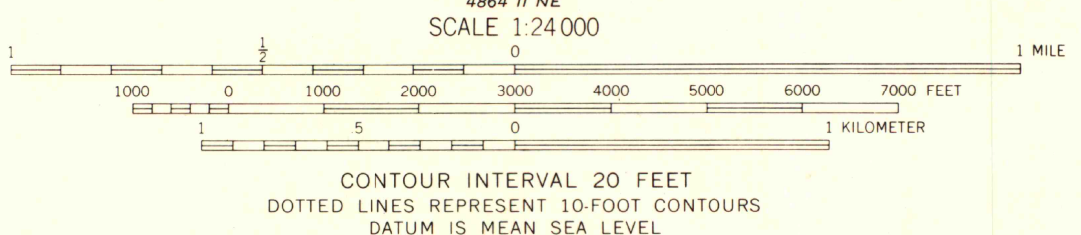


UNITED STATES  
DEPARTMENT OF THE INTERIOR  
GEOLOGICAL SURVEY

STEUBENVILLE EAST QUADRANGLE  
WEST VIRGINIA-PENNSYLVANIA-OHIO  
7.5 MINUTE SERIES (TOPOGRAPHIC)



Mapped, edited, and published by the Geological Survey  
Revised in cooperation with State of Ohio agencies  
Control by USGS, USCGS, and USCE  
Topography by photogrammetric methods from aerial  
photographs taken 1954. Field checked 1958. Revised  
from aerial photographs taken 1966. Field checked 1968  
Polyconic projection. 1927 North American datum  
10,000-foot grids based on West Virginia coordinate system, north zone,  
Pennsylvania coordinate system, south zone and Ohio coordinate system,  
north zone. 1000-meter Universal Transverse Mercator grid ticks,  
zone 17, shown in blue  
Fine red dashed lines indicate selected fence and field lines where  
generally visible on aerial photographs. This information is unchecked  
The state boundary as shown represents the approximate position of the  
low water line as determined from U.S. Corps of Engineers Ohio River  
charts, surveyed 1913, and supplementary information  
Red tint indicates areas in which only landmark buildings are shown  
Ohio area lies within the Old Seven Ranges  
Land lines based on the Ohio River Base



ROAD CLASSIFICATION  
Primary highway, all weather, hard surface  
Secondary highway, all weather, hard surface  
Light-duty road, all weather, improved surface  
Unimproved road, fair or dry hard surface  
U. S. Route  
State Route

STEUBENVILLE EAST (W. VA.)-PA.-OHIO  
N4015-W8030/7.5

1968  
AMS 4864 1 SE-SERIES V854

READ AND AM 1910 Lm 17  
AUG 8 1970  
University of Wm...