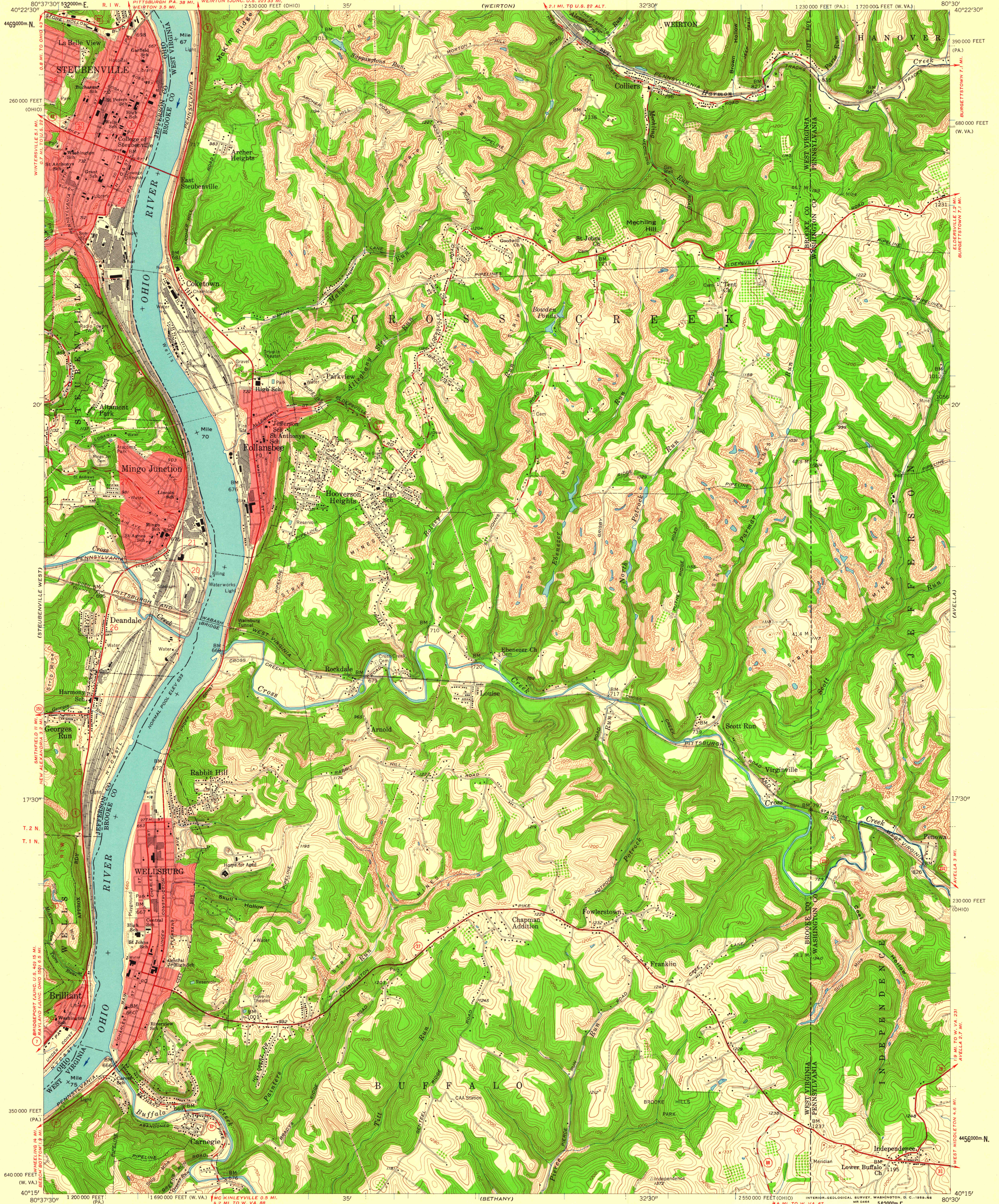


UNITED STATES
DEPARTMENT OF THE INTERIOR
GEOLOGICAL SURVEY

STEUBENVILLE EAST QUADRANGLE
WEST VIRGINIA-PENNSYLVANIA-OHIO
7.5 MINUTE SERIES (TOPOGRAPHIC)
SE 1/4 STEUBENVILLE 15' QUADRANGLE



Mapped, edited, and published by the Geological Survey
Control by USGS, USC&GS, and USCE

Topography from aerial photographs by photogrammetric methods
Aerial photographs taken 1954. Field check 1958
Polyconic projection. 1927 North American datum
10,000-foot grid based on West Virginia coordinate system, north zone,
Pennsylvania coordinate system, south zone, and Ohio coordinate system,
north zone. 1000-meter Universal Transverse Mercator grid ticks,
zone 17, shown in blue

Fine red dashed lines indicate selected fence and field lines
visible on aerial photographs. This information is unchecked
Red tint indicates area in which only landmark buildings are shown
The state boundary as shown represents the approximate position of the
low waterline as determined from U.S. Corps of Engineers, Ohio River
charts, surveyed 1913, and supplementary information
Land lines based on Ohio River Base. Unlabeled wells are oil wells
Unchecked elevations are shown in brown

APPROXIMATE MEAN
DECLINATION, 1958

SCALE 1:24,000
1 0 1000 2000 3000 4000 5000 6000 7000 FEET
1 0 5 10 KILOMETER
CONTOUR INTERVAL 20 FEET
DOTTED LINES REPRESENT 10-FOOT CONTOURS
DATUM IS MEAN SEA LEVEL

THIS MAP COMPLIES WITH NATIONAL MAP ACCURACY STANDARDS
FOR SALE BY U.S. GEOLOGICAL SURVEY, WASHINGTON 25, D. C.
A FOLDER DESCRIBING TOPOGRAPHIC MAPS AND SYMBOLS IS AVAILABLE ON REQUEST

ROAD CLASSIFICATION
Heavy-duty ——— Light-duty ———
Medium-duty ——— Unimproved dirt ———
U.S. Route ——— State Route ———

STEUBENVILLE EAST, W. VA.-PA.-OHIO
SE 1/4 STEUBENVILLE 15' QUADRANGLE
N 4015-W8030/7.5

MAP AND AIR PHOTO LIBRARY
University of Wisconsin
1958