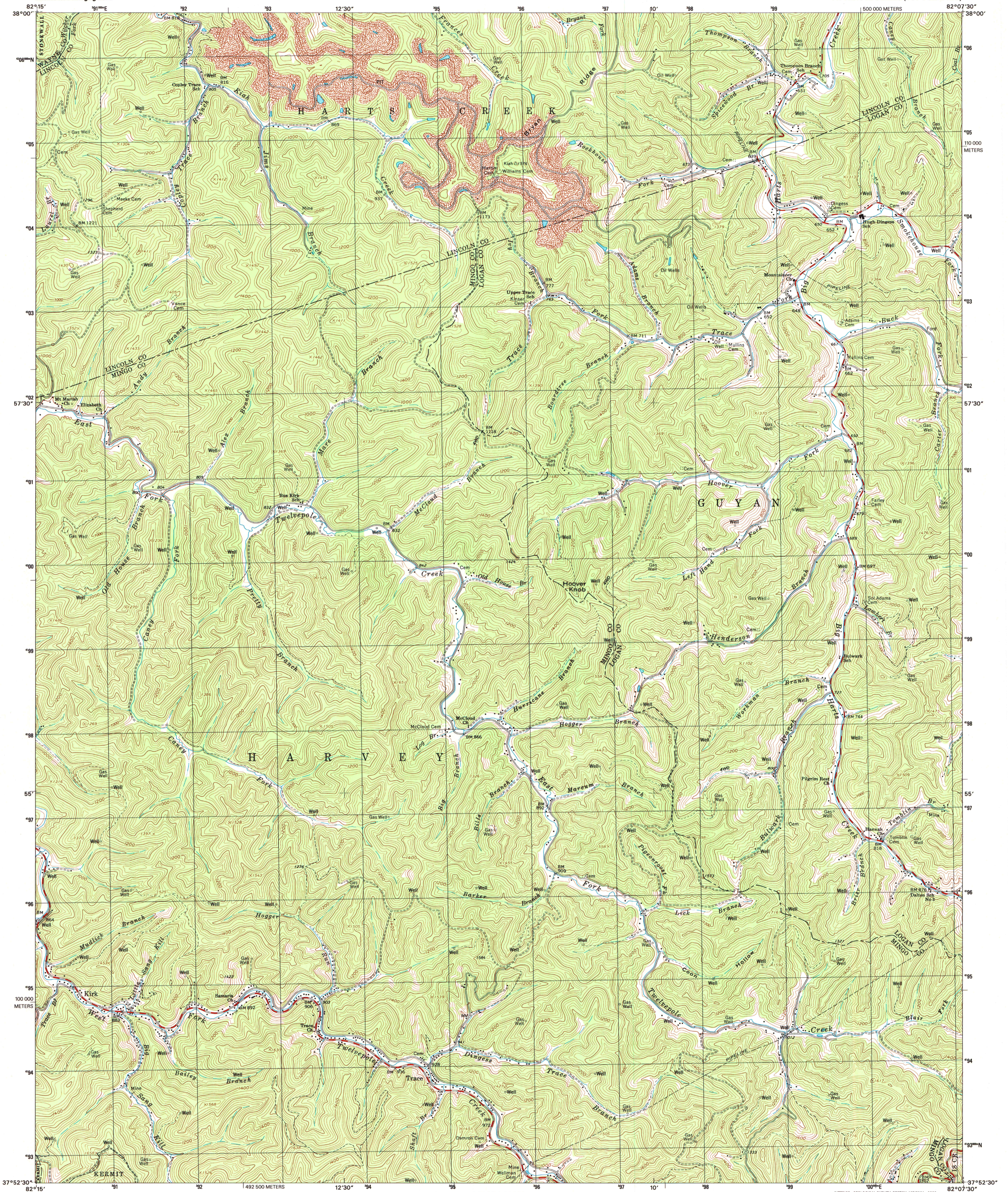


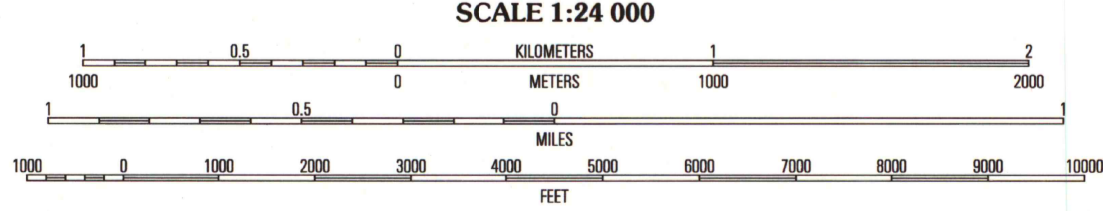
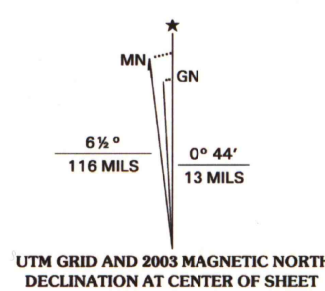


U.S. DEPARTMENT OF THE INTERIOR
U.S. GEOLOGICAL SURVEY

TRACE QUADRANGLE
WEST VIRGINIA
7.5-MINUTE SERIES (TOPOGRAPHIC)



Produced by the United States Geological Survey
Topography compiled 1997. Planimetry derived from imagery taken 1997 and other sources. Survey control current as of 1963. Boundaries current as of 2002.
North American Datum of 1983 (NAD 83). Projection and 1000-meter grid: Universal Transverse Mercator, zone 17. 2500-meter ticks: West Virginia Coordinate System of 1983 (south zone). North American Datum of 1927 (NAD 27) is shown by dashed corner ticks. The values of the shift between NAD 83 and NAD 27 for 7.5-minute intersections are obtainable from National Geographic Survey NADCON software.
Houses of worship, schools, and other labeled buildings verified 1963.



ROAD CLASSIFICATION

Primary highway	Light-duty road, hard or improved surface
Secondary highway	Unimproved road
Interstate Route	U.S. Route
State Route	

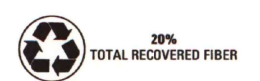
CONTOUR INTERVAL 40 FEET
NATIONAL GEODETIC VERTICAL DATUM OF 1929
(TO CONVERT ELEVATIONS TO THE NORTH AMERICAN VERTICAL DATUM OF 1988, SUBTRACT 1 FOOT)
TO CONVERT FROM FEET TO METERS, MULTIPLY BY 0.3048

THIS MAP COMPLIES WITH NATIONAL MAP ACCURACY STANDARDS
FOR SALE BY U.S. GEOLOGICAL SURVEY, P.O. BOX 25286, DENVER, COLORADO 80225
A FOLDER DESCRIBING TOPOGRAPHIC MAPS AND SYMBOLS IS AVAILABLE ON REQUEST

1	2	3	1 Kiahsville
			2 Ranger
			3 Big Creek
			4 Windale
4	5	6	5 Chapmanville
			6 Naughtuck
			7 Myrtle
6	7	8	8 Holden

ADJOINING 7.5' QUADRANGLES

ARTHUR H. ROBINSON MAP LIBRARY
University of Wisconsin-Madison



TRACE, WV
1997

NIMA 4559 1 NW-SERIES V854

