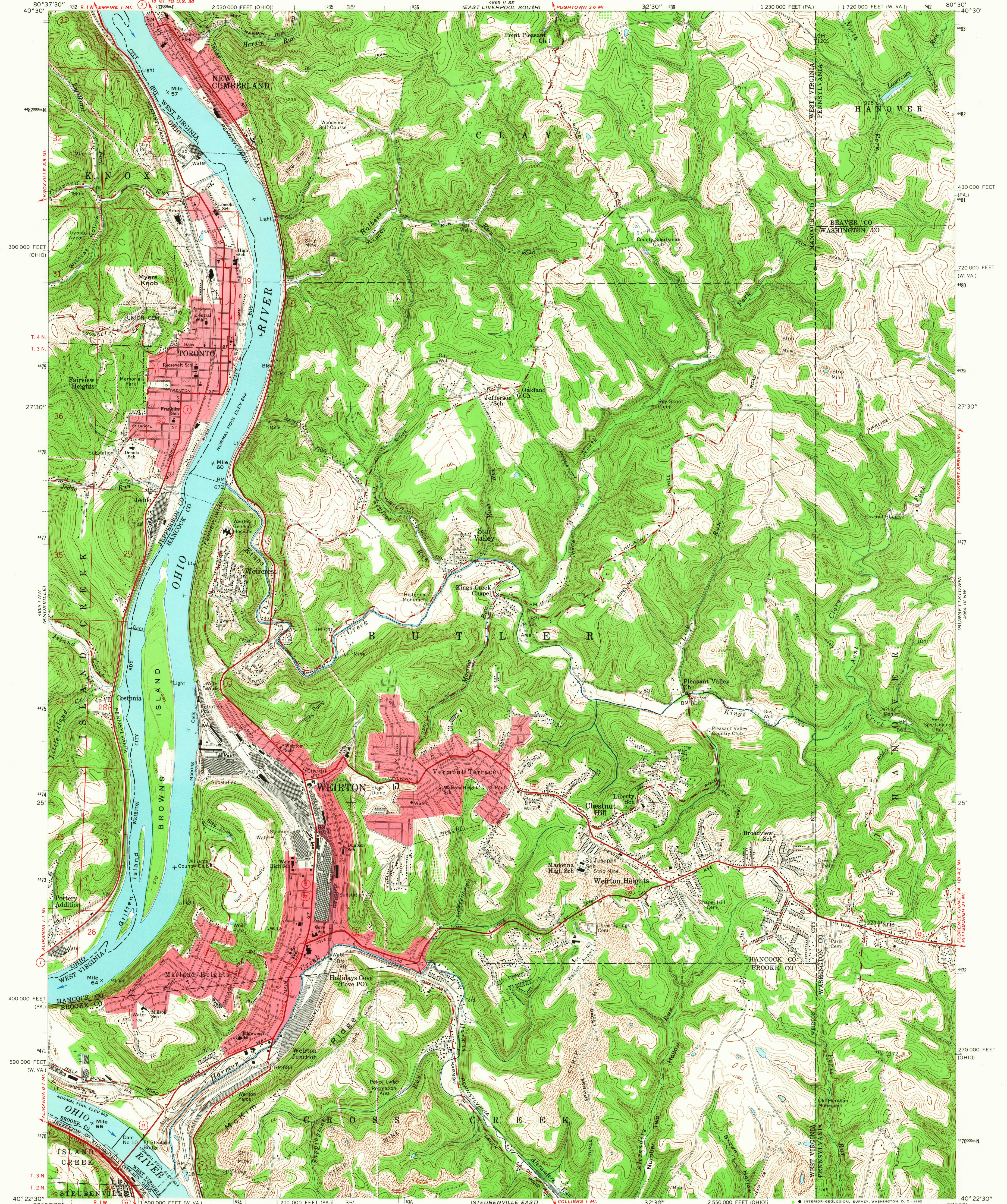
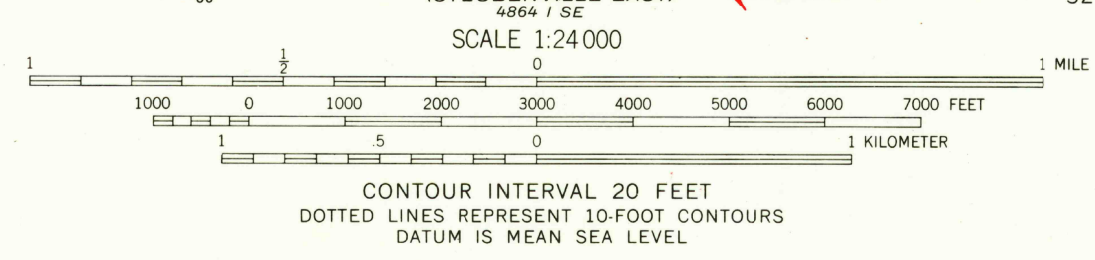


UNITED STATES
DEPARTMENT OF THE INTERIOR
GEOLOGICAL SURVEY

WEIRTON QUADRANGLE
WEST VIRGINIA-PENNSYLVANIA-OHIO
7.5 MINUTE SERIES (TOPOGRAPHIC)
NE/4 STEUBENVILLE 15' QUADRANGLE



Mapped, edited, and published by the Geological Survey
Control by USGS, USC&GS, and USCE
Topography from aerial photographs by photogrammetric methods
Aerial photographs taken 1954. Field check 1958
Polyconic projection. 1927 North American datum
10,000-foot grids based on West Virginia coordinate system, north zone,
Pennsylvania coordinate system, south zone, and Ohio coordinate system,
north zone. 1000-meter Universal Transverse Mercator grid ticks,
zone 17, shown in blue
Fine red dashed lines indicate selected fence and field lines
visible on aerial photographs. This information is unchecked
Red tint indicates area in which only landmark buildings are shown
The state boundary as shown represents the approximate position of the
low waterline as determined from U. S. Corps of Engineers, Ohio River
charts, surveyed 1913, and supplementary information
Land lines based on Ohio River Base. Unlabeled wells are oil wells
Unchecked elevations are shown in brown



ROAD CLASSIFICATION
Heavy-duty ——— Light-duty ———
Medium-duty ——— Unimproved dirt ———
U. S. Route ——— State Route ———

WEIRTON, W. VA.—PA.—OHIO
NE/4 STEUBENVILLE 15' QUADRANGLE
N4022.5—W8030/7.5

1958
AMS 4864 I NE—SERIES V85

U.S.G.S.
FILE COPY
TOPOGRAPHIC DIVISION

OCT 14 1965
5340