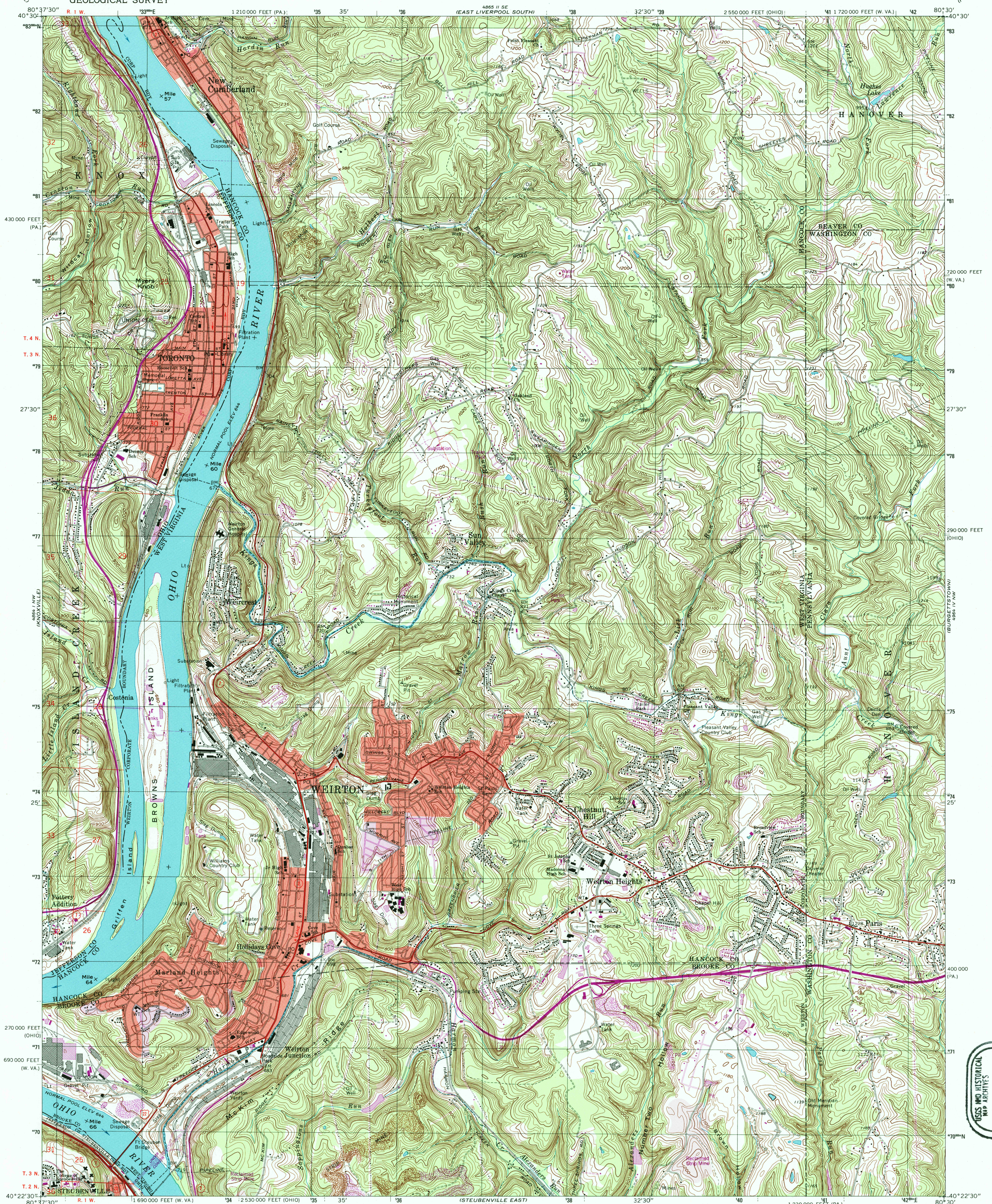


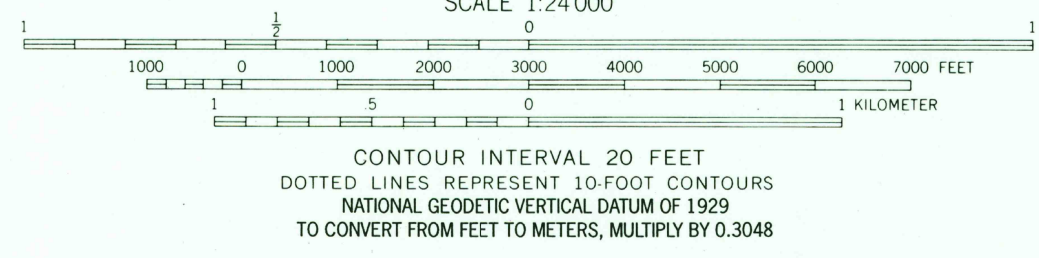
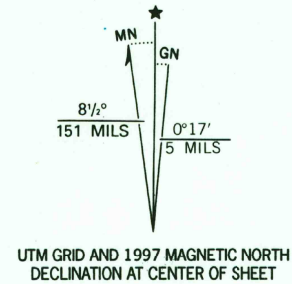
UNITED STATES  
DEPARTMENT OF THE INTERIOR  
GEOLOGICAL SURVEY

WEIRTON QUADRANGLE  
WEST VIRGINIA-PENNSYLVANIA-OHIO  
7.5 MINUTE SERIES (TOPOGRAPHIC)



USGS AND HISTORICAL  
MAP ARCHIVES  
MAY 3 1 1998  
REC'D FILE COPY

Produced by the United States Geological Survey  
Topography compiled 1954. Planimetry derived from imagery taken  
1988. Photospectroscopy using imagery dated 1994; no major culture  
or drainage changes observed. Survey control current as of 1968  
boundaries, other than corporate, verified 1997  
North American Datum of 1927 (NAD 27)  
Projection: West Virginia coordinate system, north zone  
(Lambert conformal conic)  
10 000-foot ticks: West Virginia coordinate system, north zone,  
Pennsylvania coordinate system, south zone, and  
Ohio coordinate system, north zone  
1000-meter Universal Transverse Mercator, zone 17  
North American Datum of 1983 (NAD 83) is shown by dashed  
corner ticks. The values of the shift between NAD 27 and NAD 83  
for 7.5-minute intersections are obtainable from National Geodetic  
Survey NADCON software  
The state boundary as shown represents the approximate position of the  
low water line as determined from U.S. Corps of Engineers, Ohio River  
charts, surveyed 1913, and supplementary information  
Ohio areas lie within the Old Seven Ranges  
Land lines based on the Ohio River Base  
Information shown in purple may not meet USGS content standards  
and may conflict with previously mapped contours  
Portions of Ohio-West Virginia boundary in dispute not shown



Primary highway, hard surface	Light-duty road, hard or improved surface
Secondary highway, hard surface	Unimproved road
Interstate Route	U. S. Route
	State Route

WEIRTON, W. VA. - PA. - OHIO

1994

NIMA 4864 1 NE - SERIES V854

THIS MAP COMPLIES WITH NATIONAL MAP ACCURACY STANDARDS  
FOR SALE BY U.S. GEOLOGICAL SURVEY, P.O. BOX 25286, DENVER, COLORADO 80225  
A FOLDER DESCRIBING TOPOGRAPHIC MAPS AND SYMBOLS IS AVAILABLE ON REQUEST

ISBN 0-607-67361-2  
9 780607 673612