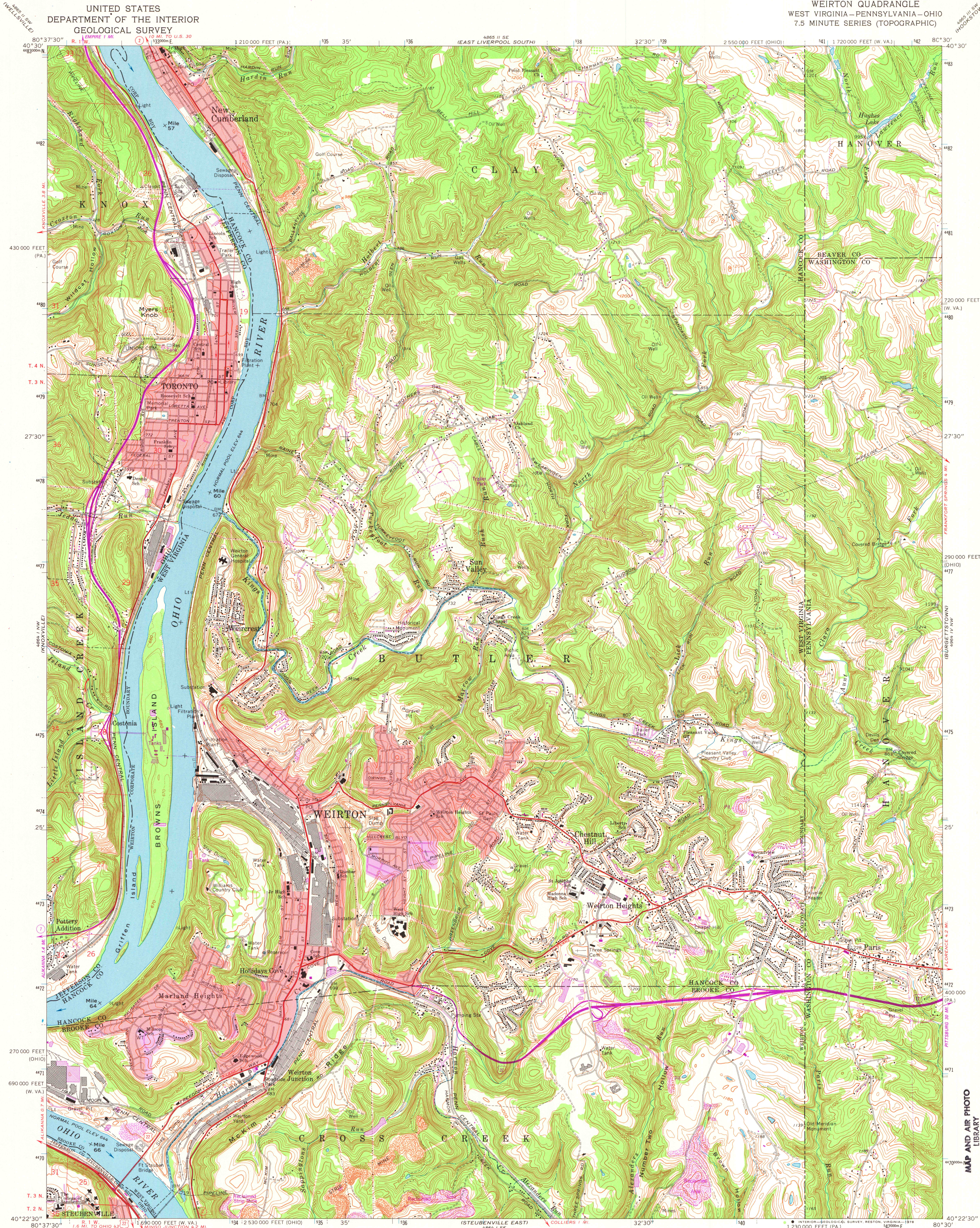


UNITED STATES  
DEPARTMENT OF THE INTERIOR  
GEOLOGICAL SURVEY

WEIRTON QUADRANGLE  
WEST VIRGINIA-PENNSYLVANIA-OHIO  
7.5 MINUTE SERIES (TOPOGRAPHIC)

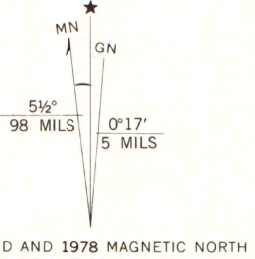


MAP AND AIR PHOTO  
LIBRARY

SEP 22 1978

University of Wisconsin  
Madison

Mapped, edited, and published by the Geological Survey  
Revised in cooperation with State of Ohio agencies  
Control by USGS, USC&GS, and USCE  
Topography by photogrammetric methods from aerial  
photographs taken 1954. Field checked 1958. Revised  
from aerial photographs taken 1966. Field checked 1968  
Polyconic projection. 1927 North American datum  
10,000-foot grids based on West Virginia coordinate system, north zone,  
Pennsylvania coordinate system, south zone, and Ohio coordinate system,  
north zone. 1000-meter Universal Transverse Mercator grid ticks,  
zone 17, shown in blue  
Fine red dashed lines indicate selected fence and field lines where  
generally visible on aerial photographs. This information is unchecked  
The state boundary as shown represents the approximate position of the  
low water line as determined from U.S. Corps of Engineers, Ohio River  
charts, surveyed 1913, and supplementary information  
Red tint indicates areas in which only landmark buildings are shown  
Ohio areas lie within the Old Seven Ranges. Land lines based on the Ohio River Base



SCALE 1:24,000  
0 1000 2000 3000 4000 5000 6000 7000 FEET  
0 1 2 3 4 5 6 7 8 9 10 KILOMETERS  
CONTOUR INTERVAL 20 FEET  
DOTTED LINES REPRESENT 10-FOOT CONTOURS  
NATIONAL GEODETIC VERTICAL DATUM OF 1929



ROAD CLASSIFICATION  
Primary highway, all weather, hard surface  
Light-duty road, all weather, improved surface  
Unimproved road, fair or dry weather  
U.S. Route  
State Route

WEIRTON, W. VA. - PA. - OHIO

N4022.5-W8030/7.5

1968  
PHOTOREVISED 1978  
AMS 4864 I NE-SERIES V854

THIS MAP COMPLIES WITH NATIONAL MAP ACCURACY STANDARDS  
FOR SALE BY U.S. GEOLOGICAL SURVEY, RESTON, VIRGINIA 22092  
A FOLDER DESCRIBING TOPOGRAPHIC MAPS AND SYMBOLS IS AVAILABLE ON REQUEST

Revisions shown in purple compiled in cooperation with  
State of Ohio agencies from aerial photographs taken  
1976. Map edited 1978. This information not field checked  
Purple tint indicates extension of urban areas  
Portions of Ohio-West Virginia boundary in dispute, not shown