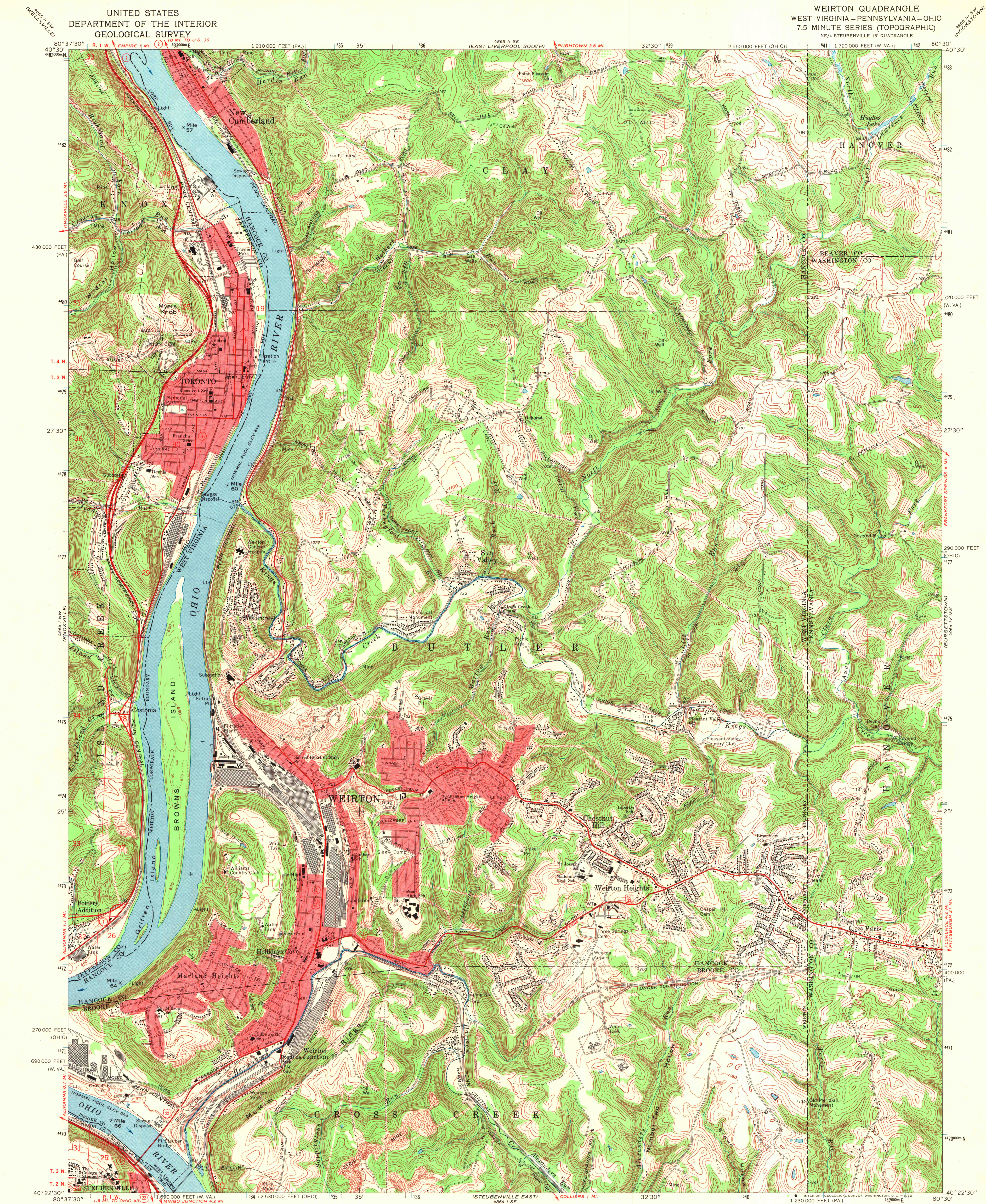


UNITED STATES
DEPARTMENT OF THE INTERIOR
GEOLOGICAL SURVEY

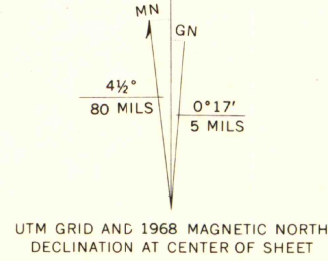
WEIRTON QUADRANGLE
WEST VIRGINIA-PENNSYLVANIA-OHIO
7.5 MINUTE SERIES (TOPOGRAPHIC)
NE/4 STEUBENVILLE 15' QUADRANGLE



Maped, edited, and published by the Geological Survey
Revised in cooperation with State of Ohio agencies
Control by USGS, USCGS, and USCE

Topography by photogrammetric methods from aerial
photographs taken 1954. Field checked 1958. Revised
from aerial photographs taken 1965. Field checked 1968
Polyconic projection. 1927 North American datum.
10,000-foot grids based on West Virginia coordinate system, north zone,
Pennsylvania coordinate system, south zone, and Ohio coordinate system,
north zone. 1000-meter Universal Transverse Mercator grid ticks,
zone 17, shown in blue.

Fine red dashed lines indicate selected fence and field lines where
generally visible on aerial photographs. This information is unchecked.
The state boundary as shown represents the approximate position of the
low water line as determined from U.S. Corps of Engineers, Ohio River
charts, surveyed 1913, and supplementary information.
Red tint indicates areas in which only landmark buildings are shown.
Ohio areas lie within the Old Seven Ranges. Land lines based on the Ohio River Base



SCALE 1:24,000
CONTOUR INTERVAL 20 FEET
DOTTED LINES REPRESENT 10-FOOT CONTOURS
DATUM IS MEAN SEA LEVEL

ROAD CLASSIFICATION
Primary highway, all weather, hard surface
Light-duty road, all weather, improved surface
Unimproved road, fair or dry weather
U. S. Route
State Route



MAP AND AIR PHOTO
LIBRARY

WEIRTON W. VA. - PA. - OHIO
NE/4 STEUBENVILLE 15' QUADRANGLE
N4022.5-W8030/7.5

OCT 12 1972

1968

AMS 4864 I NE-SERIES V854

University of Wisconsin