

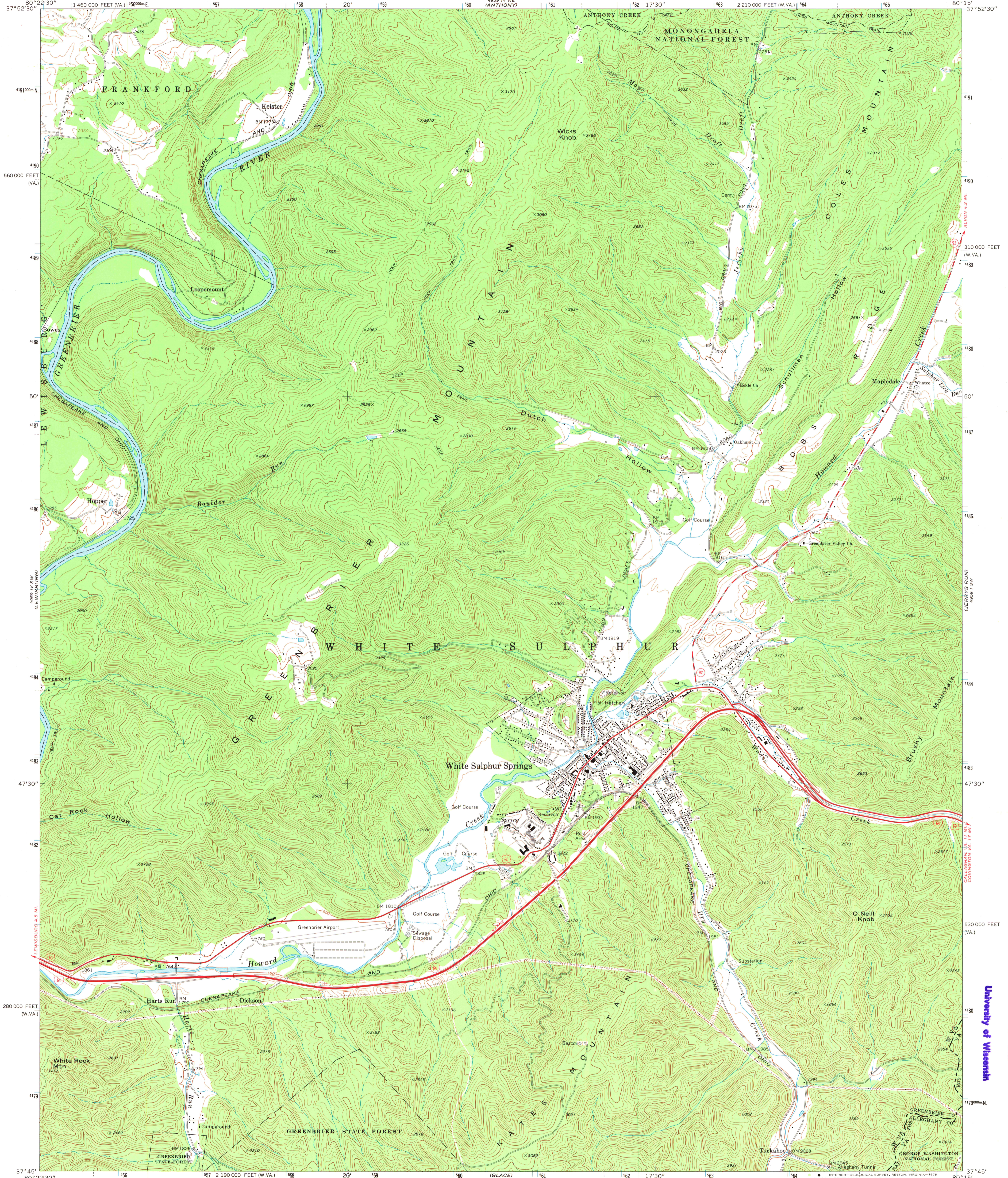
4959 IV NW  
(WILLIAMSBURG)

UNITED STATES  
DEPARTMENT OF THE INTERIOR  
GEOLOGICAL SURVEY

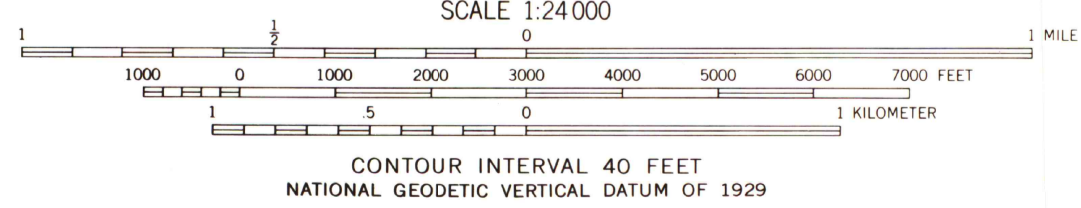
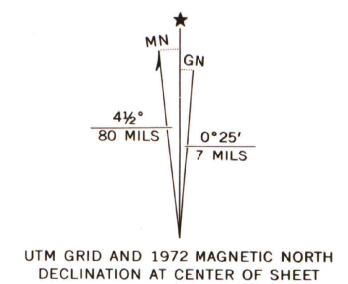
STATE OF WEST VIRGINIA  
REPRESENTED BY THE  
STATE OF WEST VIRGINIA GEOLOGICAL SURVEY  
AND OTHER STATE AGENCIES

WHITE SULPHUR SPRINGS QUADRANGLE  
WEST VIRGINIA-VIRGINIA  
7.5 MINUTE SERIES (TOPOGRAPHIC)  
SE/4 WHITE SULPHUR SPRINGS 15' QUADRANGLE

4959 IV NW  
(ALYSON)



Maped, edited, and published by the Geological Survey  
Control by USGS and USC&GS  
Topography by photogrammetric methods from aerial  
photographs taken 1970 and 1971. Field checked 1972  
Projection: West Virginia coordinate system, south zone  
(Lambert conformal conic)  
10,000-foot grids based on West Virginia coordinate system,  
south zone, and Virginia coordinate system, south zone  
1000-meter Universal Transverse Mercator grid ticks,  
zone 17, shown in blue. 1927 North American datum



ROAD CLASSIFICATION

Primary highway, hard surface	Light-duty road, hard or improved surface
Secondary highway, hard surface	Unimproved road
Interstate Route	U.S. Route
	State Route

WHITE SULPHUR SPRINGS, W. VA. -VA.  
SE/4 WHITE SULPHUR SPRINGS 15' QUADRANGLE  
N3745-W8015/7.5

1972  
AMS 4959 IV SE-SERIES V854

THIS MAP COMPLIES WITH NATIONAL MAP ACCURACY STANDARDS  
FOR SALE BY U. S. GEOLOGICAL SURVEY, RESTON, VIRGINIA 22092  
AND VIRGINIA DIVISION OF MINERAL RESOURCES, CHARLOTTEVILLE, VIRGINIA 22903  
A FOLDER DESCRIBING TOPOGRAPHIC MAPS AND SYMBOLS IS AVAILABLE ON REQUEST

MAP AND AIR PHOTO  
MAR 26 1975  
University of Wisconsin