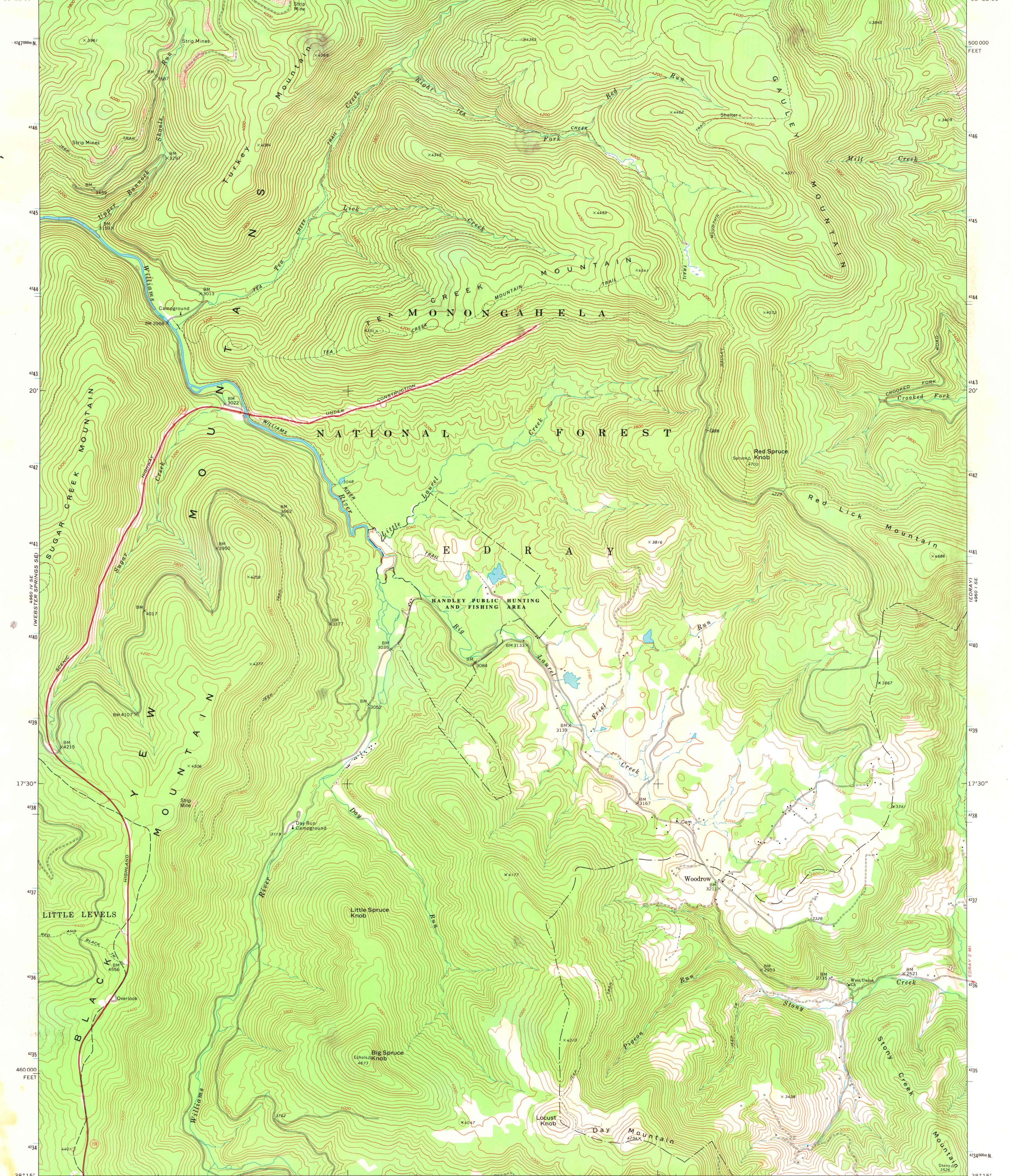
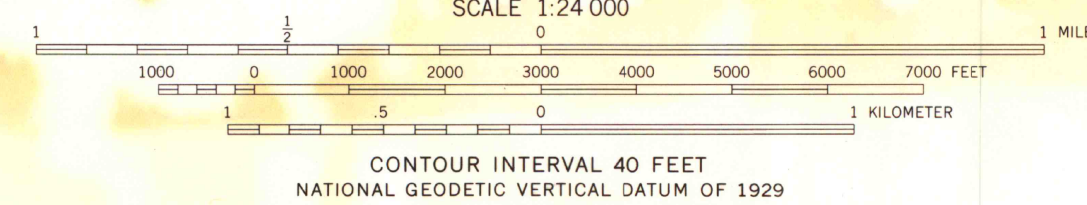
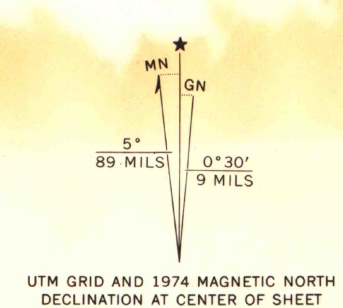


80° 15' 166 000 E. 167 168 169 12' 30" 170 171 172 10' 173 174 175 2250000 FEET 80° 07' 30" 38° 22' 30"



Mapped, edited, and published by the Geological Survey  
Control by USGS, and NOS/NOAA  
Topography by photogrammetric methods from aerial photographs  
taken 1973. Field checked 1974  
Projection and 10,000-foot grid ticks: West Virginia coordinate  
system, south zone (Lambert conformal conic)  
1000-meter Universal Transverse Mercator grid ticks,  
zone 17, shown in blue. 1927 North American datum



CONTOUR INTERVAL 40 FEET  
NATIONAL GEODETIC VERTICAL DATUM OF 1929



ROAD CLASSIFICATION  
Primary highway, hard surface  
Secondary highway, hard surface  
Light-duty road, hard or improved surface  
Unimproved road  
Interstate Route  
U. S. Route  
State Route

THIS MAP COMPLIES WITH NATIONAL MAP ACCURACY STANDARDS  
FOR SALE BY U. S. GEOLOGICAL SURVEY, RESTON, VIRGINIA 22092  
A FOLDER DESCRIBING TOPOGRAPHIC MAPS AND SYMBOLS IS AVAILABLE ON REQUEST

MAP AND AIR PHOTO  
LIBRARY

JUN 22 1978

WOODROW, W. VA.  
SW 1/4 MINO 15' QUADRANGLE  
N3815-W8007.5/7.5

1977

AMS 4960 I SW—SERIES V854

University of Wisconsin  
Madison