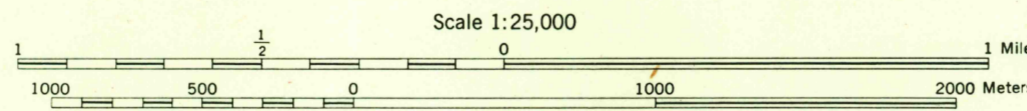


AMS V854
Edition 1-AMS

Prepared by the Army Map Service (AM), Corps of Engineers, U. S. Army, Washington, D. C. Copied in 1954 from West Virginia, 1:24,000, USGS, Keyser, 1951. Original map compiled by U. S. Geological Survey. Topography by photogrammetric methods from aerial photography dated 1946 and 1947. Horizontal and vertical control by USGS and USC&GS. This map complies with the national standard map accuracy requirements. Map field checked, 1949.



CONTOUR INTERVAL 20 FEET
VERTICAL DATUM: SEA LEVEL DATUM OF 1929
TRANSVERSE MERCATOR PROJECTION
HORIZONTAL DATUM: 1927 NORTH AMERICAN DATUM

BLACK NUMBERED LINES INDICATE THE 1,000 METER UNIVERSAL TRANSVERSAL MERCATOR GRID, ZONE 17
THE LAST THREE DIGITS OF THE GRID NUMBERS ARE OMITTED

USERS NOTING ERRORS OR OMISSIONS ON THIS MAP ARE URGED TO MARK HEREON AND FORWARD DIRECTLY TO COMMANDING OFFICER, ARMY MAP SERVICE, WASHINGTON, D. C. MAPS SO FORWARDED WILL BE RETURNED OR REPLACED IF DESIRED.

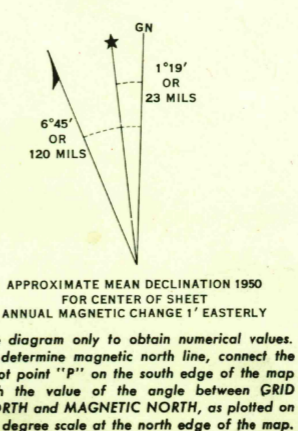
LEGEND

ROAD DATA 1951
In developed areas, only through roads are classified

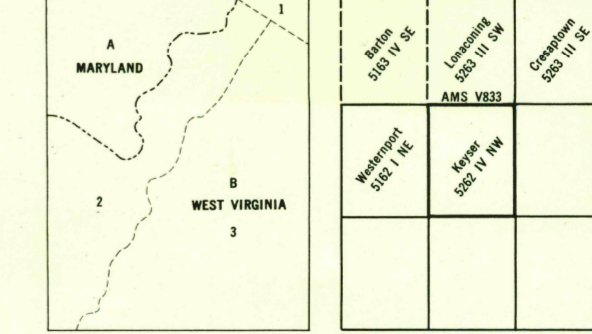
Hard surface, heavy duty road, four or more lanes wide	Improved light duty road, street
Hard surface, heavy duty road, two lanes wide	Unimproved dirt road
Hard surface, medium duty road, four or more lanes wide	Trail
Hard surface, medium duty road, two lanes wide	Route markers: Federal, State
Hard surface, light duty road, two lanes wide	Route markers: Federal, State
Buildings	Horizontal control point
Barns, sheds, greenhouses, stadiums, etc.	Bench mark, monument
Standard gauge railroad	Bench mark, non-monumented
Narrow gauge railroad	Spot elevation in feet: Checked; Unchecked
Railroad in street	Woods or brushwood
Carline	Vineyard; Orchard
National boundary	Intermittent lake
State boundary (with monument)	Intermittent stream; Dam
County boundary	Swamp, marsh
District boundary	Rapids; Falls
Corporate limits	Large rapids; Large falls
Reservation boundary	

TO GIVE A STANDARD REFERENCE ON THIS SHEET TO NEAREST 100 METERS

GRID ZONE DESIGNATION	17S
100,000 M. SQUARE IDENTIFICATION	PP
SAMPLE POINT IDENTIFICATION	77 6 65
100,000 M. SQUARE IDENTIFICATION	776653
SAMPLE REFERENCE	776653
100,000 M. SQUARE IDENTIFICATION	PP776653
SAMPLE REFERENCE	776653
100,000 M. SQUARE IDENTIFICATION	17SP776653
SAMPLE REFERENCE	17SP776653



PRINTED BY ARMY MAP SERVICE, CORPS OF ENGINEERS 10-54, 701497
FL INDEX TO BOUNDARIES INDEX TO ADJOINING SHEETS



SUPERSEDED
KEYSER, W. VA.; MD.

RETURN TO:
USGS AND HISTORICAL MAP ARCHIVES