

802-N-1-E/2
TOPOGRAPHY
 STATE OF WEST VIRGINIA
 I. C. WHITE
 STATE GEOLOGIST
 (Richwood)

DEPARTMENT OF THE INTERIOR
 ALBERT B. FALL, SECRETARY
 U. S. GEOLOGICAL SURVEY
 GEORGE OTIS SMITH, DIRECTOR

WEST VIRGINIA
 CLINTONVILLE QUADRANGLE

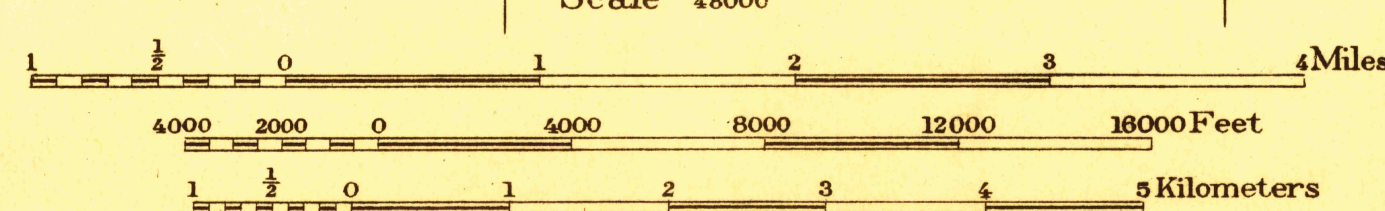
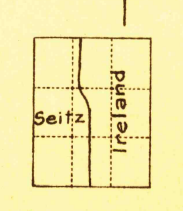
Advance sheet.
 Subject to correction.



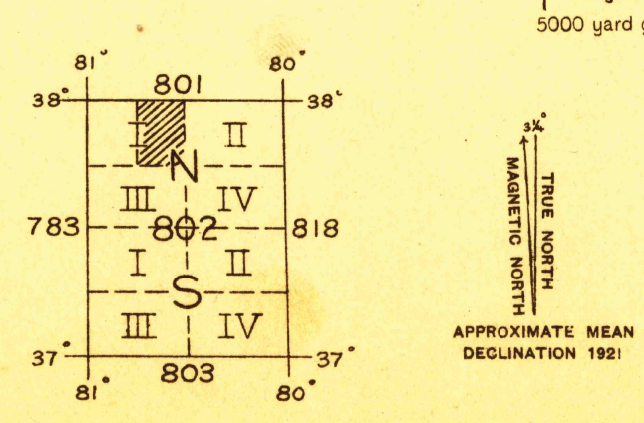
(Winona) 38° 00'
 80° 45'
 37° 45'
 80°

(Huntersville) 38° 00'
 80° 30'
 37° 45'
 80°

167000 yards
 102500 yards
 C. H. Birdseye, Chief Topographic Engineer.
 Frank Sutton, Division Topographic Engineer.
 E. I. Ireland, Topographic Engineer in charge.
 Topography by E. I. Ireland and R. C. Seitz.
 Control by U. S. Coast and Geodetic Survey,
 E. L. McNair, F. L. Shelibo and H. P. Kilby.
 Surveyed in 1920 - 21.



Contour interval 50 feet.
 Datum is mean sea level.



FILE COPY
 RETURN TO CENTRAL FILE
 CLINTONVILLE

Polygonic projection, North American datum
 5000 yard grid based upon U. S. zone system, B

(Alderson)
 (White Sulphur Springs)
 (Ronceverte)