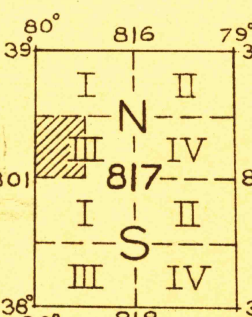
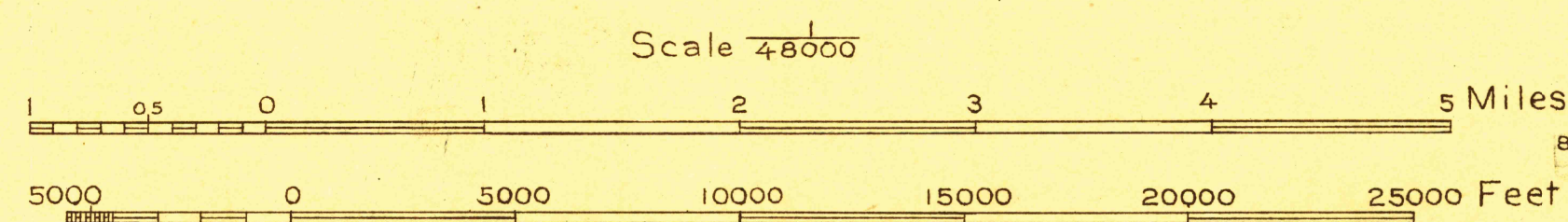


Topography by E. I. Ireland.  
Surveyed in 1921-1922. IN COOP. WITH THE STATE OF W. VA.



Polyconic projection, North American datum.

DURBIN, W. VA.

USGS  
Historical File  
Topographic Division

Datum is mean sea level.

(Sago)  
(Huntersville)  
725 000

(Horton)  
(Spruce Knob)  
(High town)