

(Sage)

DEPARTMENT OF THE INTERIOR
U. S. GEOLOGICAL SURVEY

817-N III-W/2
STATE OF WEST VIRGINIA
I. C. WHITE
STATE GEOLOGIST
(Elkins)

Advance sheet.
Subject to correction.

TOPOGRAPHIC FILES
MAY 1923 WEST VIRGINIA
DURBIN QUADRANGLE

GEOLOGICAL SURVEY
BUREAU OF TOPOGRAPHY
79°45' (Horton)
38°45'



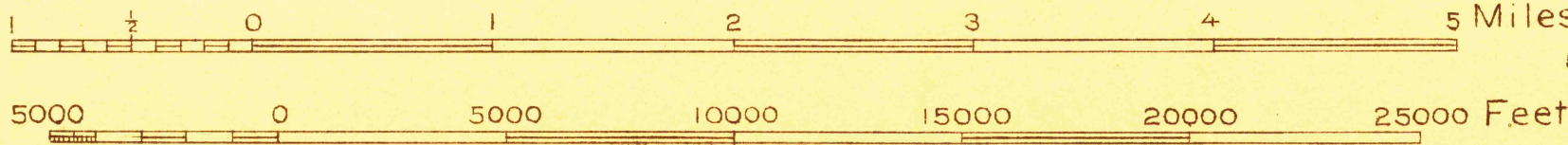
(Huntersville) 80°00'
1760000 yds
125000

Topography by E.I. Ireland.
Surveyed in 1921-1922

1100 000 yds

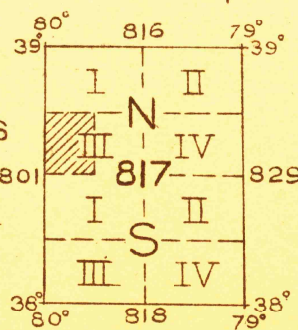
(Cass)

Scale 1:48000



Contour interval 50 feet
Datum is mean sea level

APPROXIMATE MEAN
DECLINATION 1922



Polyconic projection, North American datum,
5000 yard grid based upon U. S. zone system, B

FILE COPY

RETURN TO CENTRAL FILE

DURBIN, W. VA.

38°30'

79°45' (High town)