

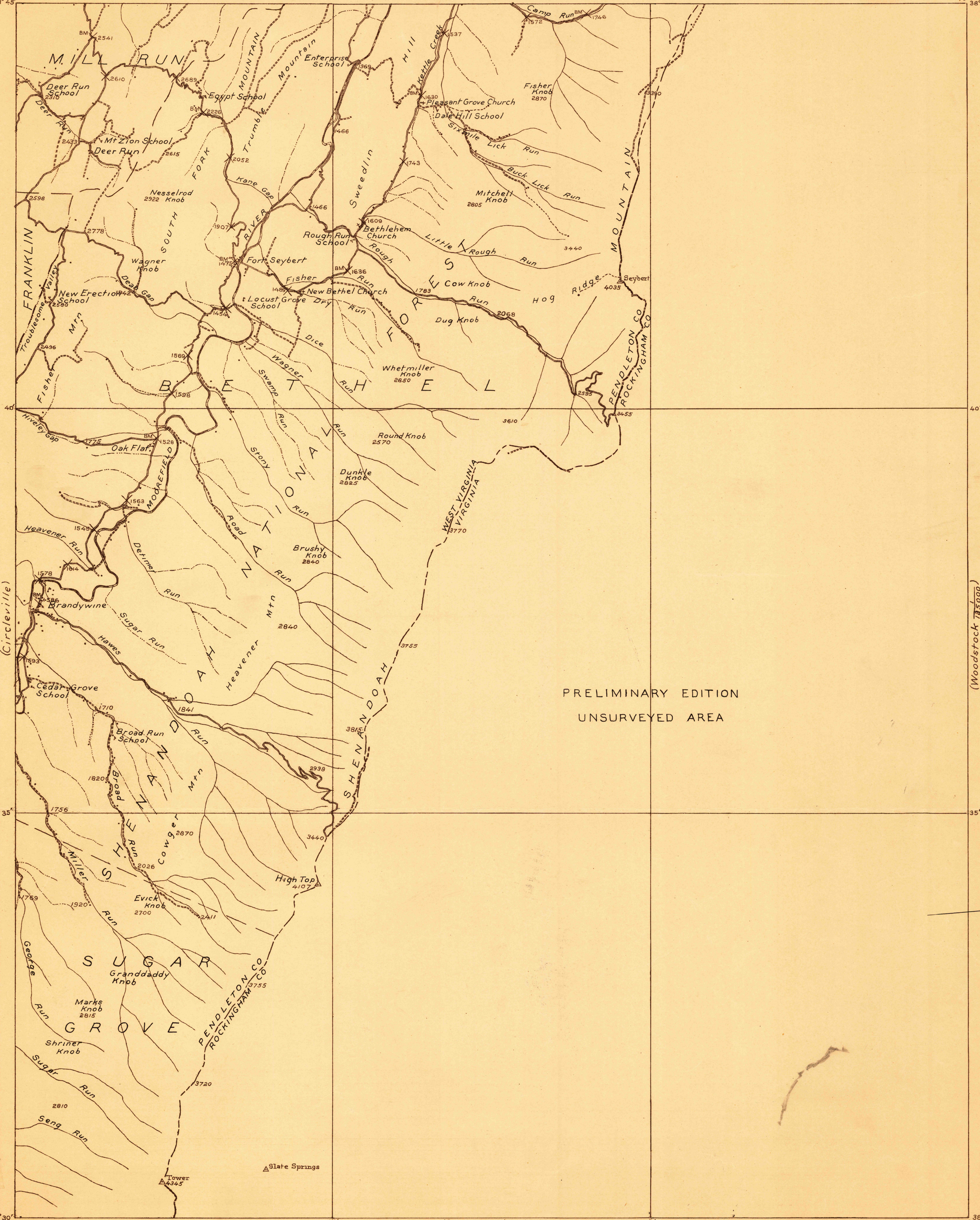
817-N-IV-E/2  
**TOPOGRAPHY**  
 STATE OF WEST VIRGINIA  
 I. C. WHITE  
 STATE GEOLOGIST  
 (Petersburg)

U. S. G. S.  
**FILE COPY**  
 Inspection and Editing.

WEST VIRGINIA-VIRGINIA  
 FORT SEYBERT QUADRANGLE

DEPARTMENT OF THE INTERIOR  
 ALBERT B. FALL, SECRETARY  
 U. S. GEOLOGICAL SURVEY  
 GEORGE OTIS SMITH, DIRECTOR

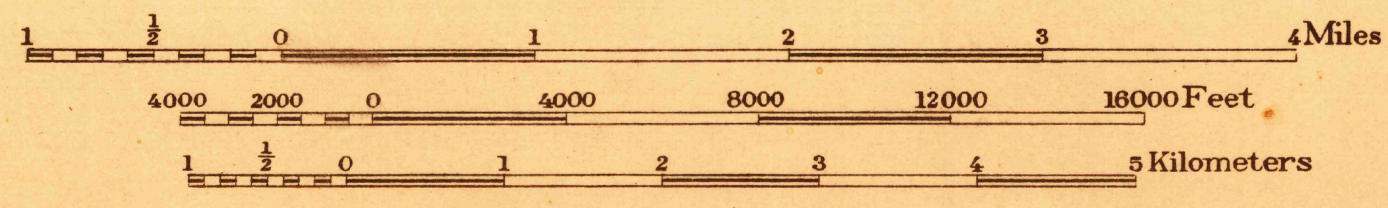
Advance sheet.  
 Subject to correction.



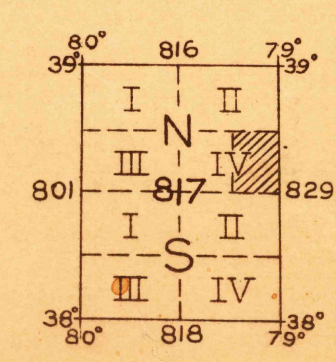
PRELIMINARY EDITION  
 UNSURVEYED AREA

(Stanton 1:25000)

Scale 1:8000



Datum is mean sea level.



APPROXIMATE MEAN  
 MAGNETIC DECLINATION 1922

FORT SEYBERT Topographic Division

(McDowell) 79° 15'  
 C. H. Birdseye, Chief Topographic Engineer.  
 Frank Sutton, Division Topographic Engineer.  
 Topography by E. J. Ireland.  
 Control by C. R. Fisher, E. E. Harris, F. L. Shalibo,  
 and Walter McCrea.  
 Surveyed in 1919, 1921, and 1922.

SURVEYED IN COOPERATION WITH THE STATE OF WEST VIRGINIA

(Woodstock 1:25000)  
 (Harrisonburg 1:25000)