

(Belington) 79° 45' 39" 00"

DEPARTMENT OF THE INTERIOR
U. S. GEOLOGICAL SURVEY

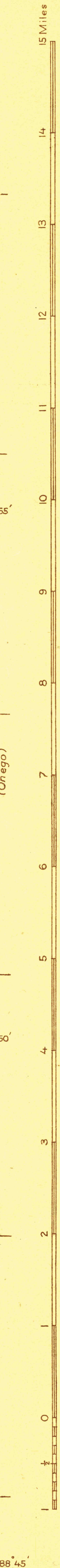
817-N-1-E/2
STATE OF WEST VIRGINIA
I. C. WHITE
STATE GEOLOGIST
(Parsons)

Advance sheet.
Subject to correction.

TOPOGRAPHIC FILES

WEST VIRGINIA
HORTON QUADRANGLE

(Davis)

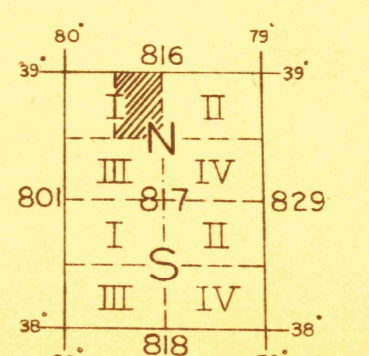
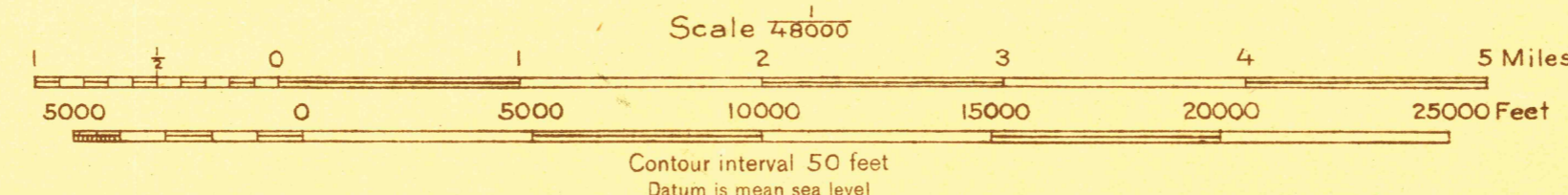


1,730,000 yds

(Durbin) 79° 45' 38" 45'

1,120,000 yds
Topography by E. J. Ireland and R. C. Seitz
Surveyed in 1916 and 1921-1922

APPROXIMATE MEAN DECLINATION 1922.



Polygonic projection, North American datum.
5000 yard grid based upon U. S. zone system, B

FILE COPY
RETURN TO CENTRAL FILE
HORTON, WVA.

(Circleville)