

REPAIRED COPY

This sheet must not be taken from the file without an order from the Chief Topographic Engineer.

601-S-14-W/2
STATE OF WEST VIRGINIA
I. C. WHITE
STATE GEOLOGIST
(Webster Springs)

Advance sheet
Subject to correction

TOPOGRAPHIC FILE
WEST VIRGINIA
LOBELIA QUADRANGLE

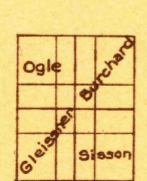
DEPARTMENT OF THE INTERIOR
U. S. GEOLOGICAL SURVEY



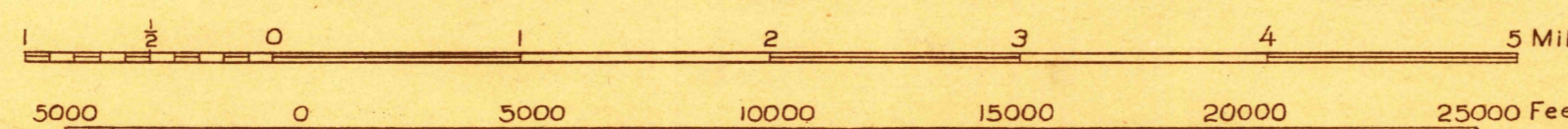
(Clintonville) 80°30'
Topography by A.J. Ogle, R.W. Burchard, M.J. Gleisner,
and G.E. Sisson
Surveyed in 1923

(White Sulphur Springs)
Scale 48000

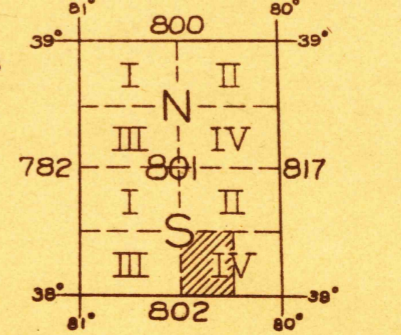
80°15' (Martinton)
80°15' (Clatskanie)



TRUE NORTH
MAGNETIC NORTH
APPROXIMATE MEAN
DECLINATION, 1923



Contour interval 50 feet
Datum is mean sea level



Polygonic projection. North American datum
5000 yard grid based upon U. S. zone system, B

FILE COPY
RETURN TO CENTRAL FILE

LOBELIA, W. VA.