

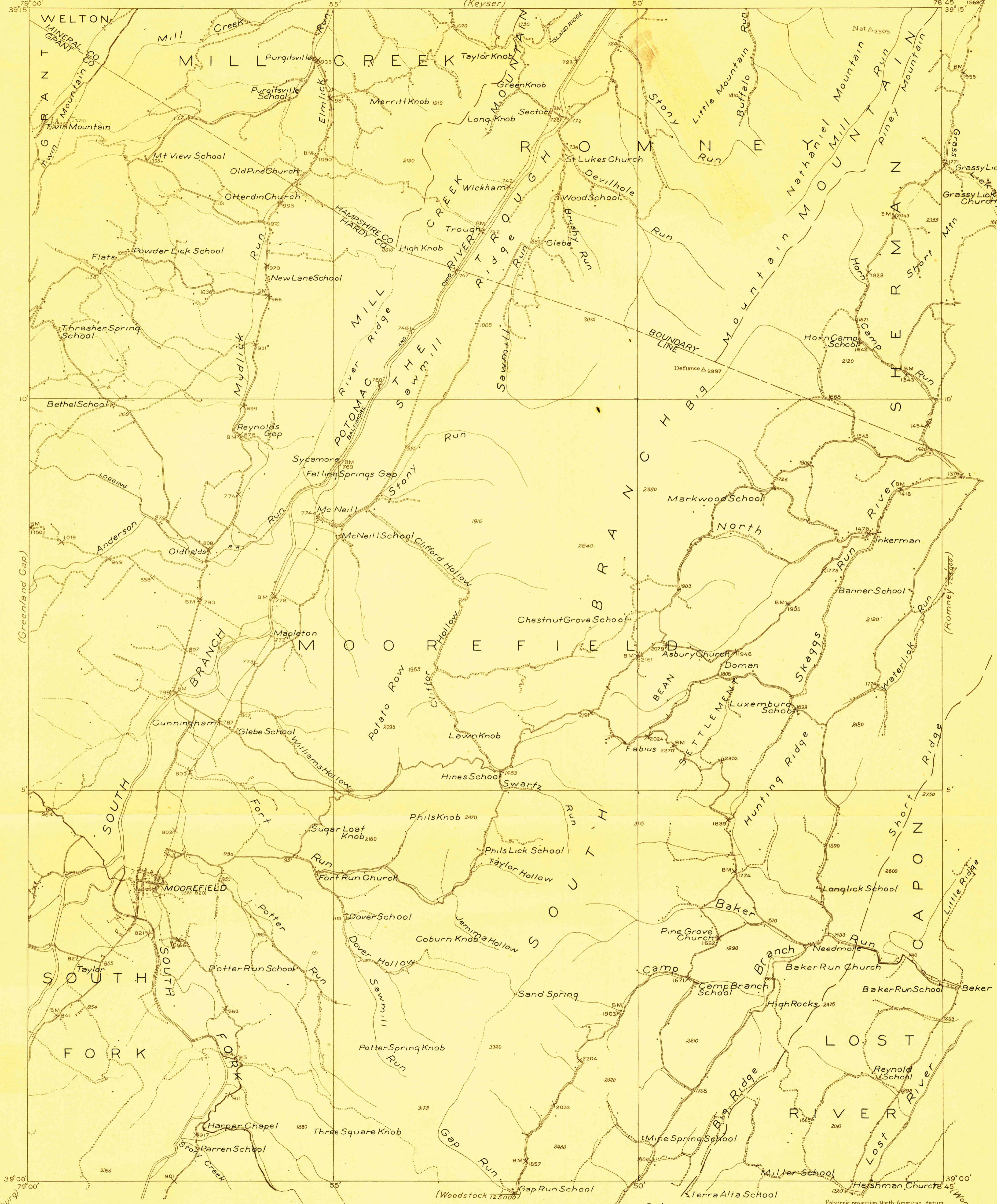
DEPARTMENT OF THE INTERIOR
JOHN BARTON PAYNE, SECRETARY
U. S. GEOLOGICAL SURVEY
GEORGE OTIS SMITH, DIRECTOR

828-S-1111-W/2
TOPOGRAPHY
STATE OF WEST VIRGINIA
I. C. WHITE
STATE GEOLOGIST
(Keyser)

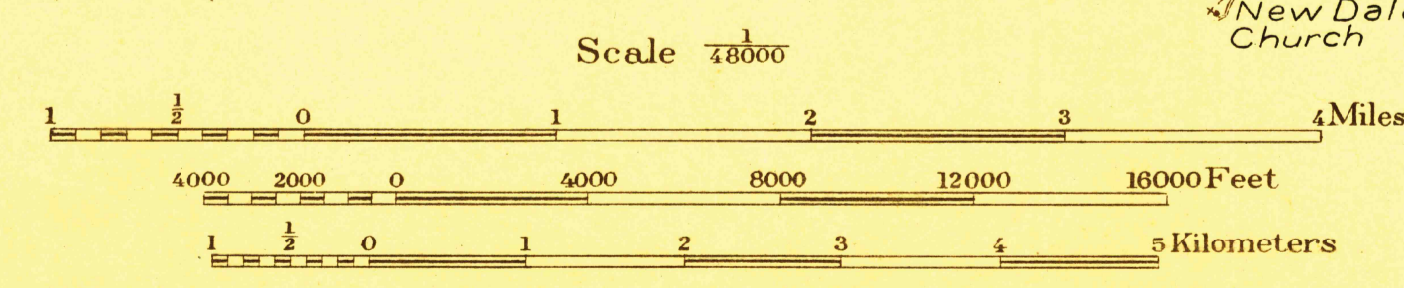
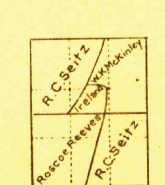
WEST VIRGINIA
MOOREFIELD QUADRANGLE

Advance sheet.
Subject to correction.

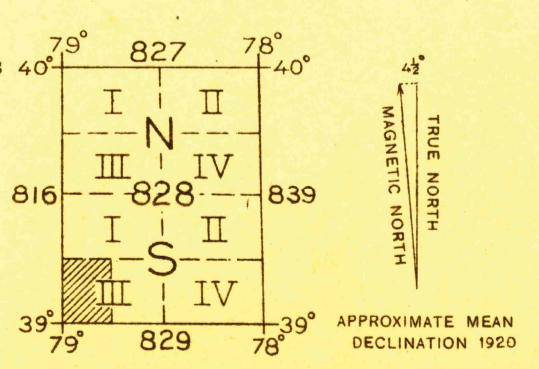
Inspection and Editing.



C. H. Birdseye, Chief Topographic Engineer
Frank Sutton, Topographic Engineer in charge
Topography by E. I. Ireland, R. C. Seitz,
Roscoe Reeves, and W. K. McKinley
Control by E. L. McNair, G. T. Hawkins,
J. B. Metcalfe, Jr., and F. L. Shalibo
Surveyed in 1920



Contour interval feet.
Datum is mean sea level.



SURVEYED IN COOPERATION WITH THE STATE OF WEST VIRGINIA

MOOREFIELD
Edition of 1921