

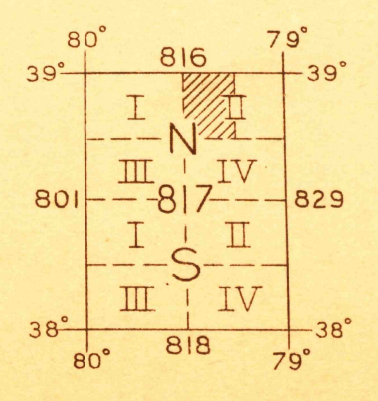
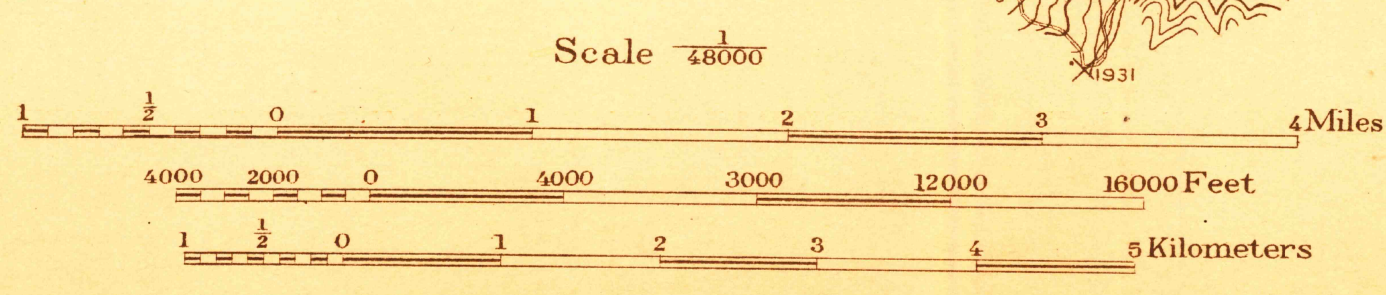
DEPARTMENT OF THE INTERIOR  
JOHN BARTON PAYNE, SECRETARY  
U. S. GEOLOGICAL SURVEY  
GEORGE OTIS SMITH, DIRECTOR

Advance sheet.  
Subject to correction.

**RETAINED COPY**  
This sheet must not be taken  
from the files without an order  
from the Chief Geographer



C. H. Birdseye, Chief Topographic Engineer  
Frank Sutton, Topographic Engineer in charge  
Topography by E. I. Ireland, R. C. Seitz,  
W. K. McKinley and Roscoe Reeves  
Control by E. L. McNair, Walter McCrea  
and F. L. Shalibo  
Surveyed in 1919-1920



SURVEYED IN COOPERATION WITH THE STATE OF WEST VIRGINIA

**FILE COPY**  
RETURN TO CENTRAL FILE  
**ONEGO**  
North American Datum  
Polyconic Projection

Contour interval 50 feet.  
Datum is mean sea level.