

(Greenland Gap)

DEPARTMENT OF THE INTERIOR
ALBERT B. FALL, SECRETARY
U. S. GEOLOGICAL SURVEY
GEORGE OTIS SMITH, DIRECTOR

829-N-1-W/2
TOPOGRAPHY
STATE OF WEST VIRGINIA
I. C. WHITE
STATE GEOLOGIST
(Moorefield)

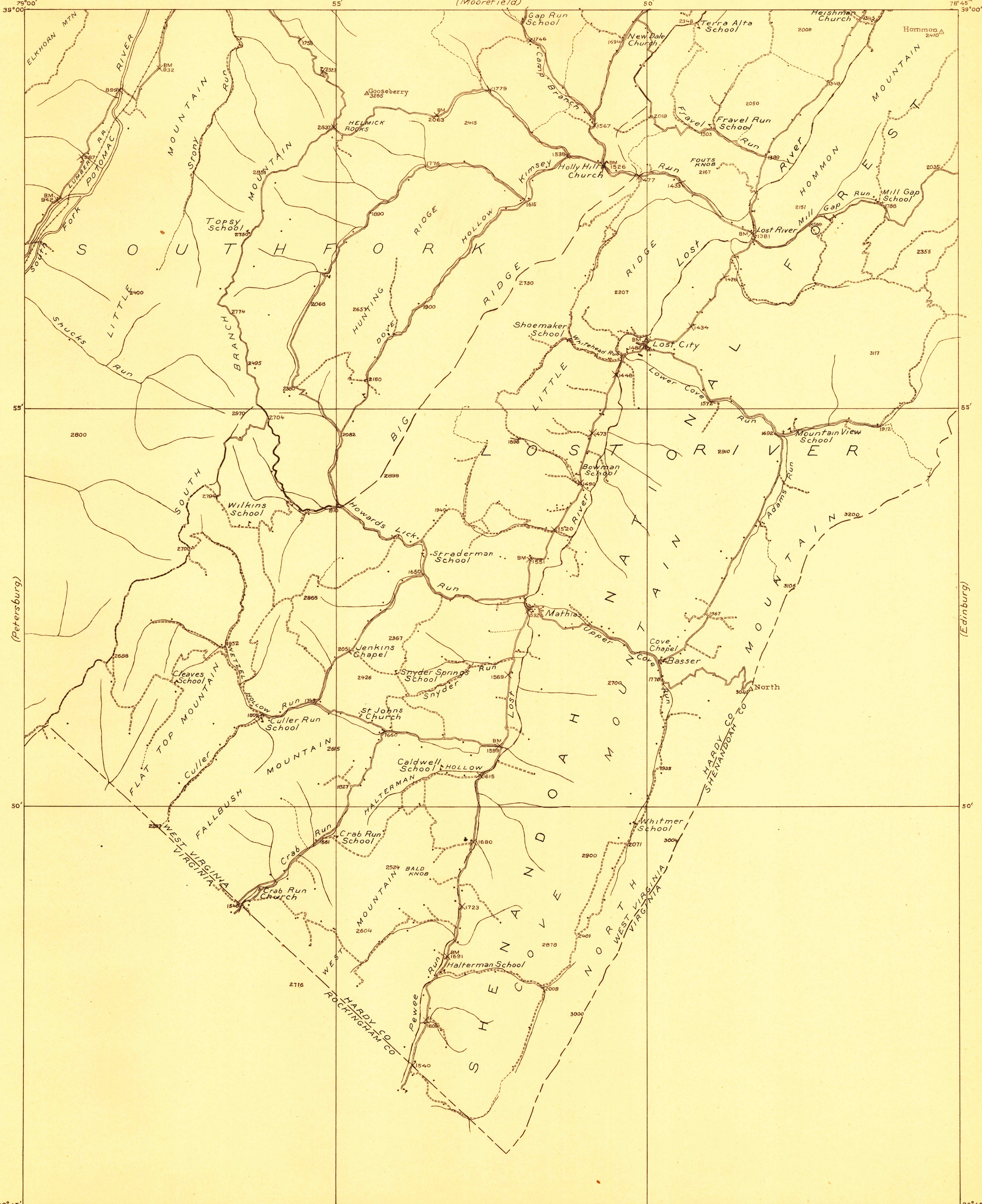
This sheet must not be taken
from the files without an order
from the Chief Geographer.

Advance sheet.
Subject to correction.

TOPOGRAPHIC FILES

JAN 24 1922
WEST VIRGINIA
ORKNEY SPRINGS QUADRANGLE

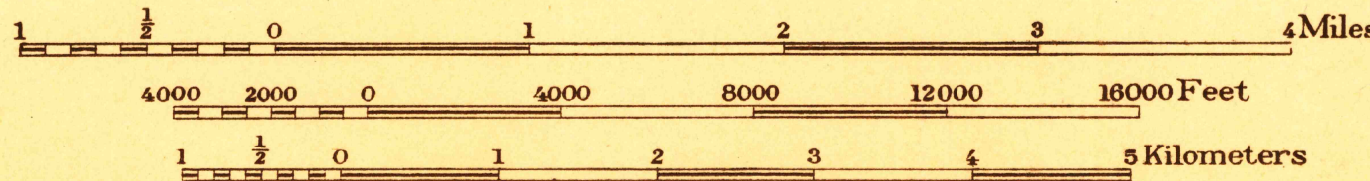
(Wardensville)



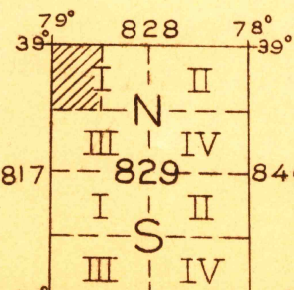
(Franklin)
125000

C. H. Birdseye, Chief Topographic Engineer.
Frank Sutton, Division Topographic Engineer.
E. I. Ireland, Topographic Engineer in charge.
Topography by E. I. Ireland, H. R. Kilmer, and J. E. King.
Control by E. L. McNair, D. H. Watson, E. E. Harris, and F. L. Shalibo.
Surveyed in 1921

SURVEYED IN COOPERATION WITH THE STATE OF WEST VIRGINIA



Datum is mean sea level.



TRUE NORTH
MAGNETIC NORTH
APPROXIMATE MEAN
DECLINATION 1921

Polyconic projection, North American datum

FILE COPY

RETURN TO CENTRAL FILE

ORKNEY SPRINGS

(Woodstock)
125000