

(Greenland Gap)

DEPARTMENT OF THE INTERIOR  
ALBERT B. FALL, SECRETARY  
U. S. GEOLOGICAL SURVEY  
GEORGE OTIS SMITH, DIRECTOR

829-N-1-W/2  
**TOPOGRAPHY**  
STATE OF WEST VIRGINIA  
I. C. WHITE  
STATE GEOLOGIST  
(Moorefield)

**TOPOGRAPHIC FILES**  
U. S. GEOLOGICAL SURVEY  
This sheet is to be taken from the files without an order from the Chief Geographer.

WEST VIRGINIA  
ORKNEY SPRINGS QUADRANGLE

Advance sheet.  
Subject to correction.

APR 6 1922

(Wardensville)



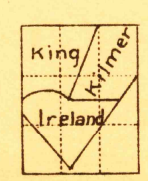
1790000 yards

39° 45' 79° 00'

(Franklin)  
125000

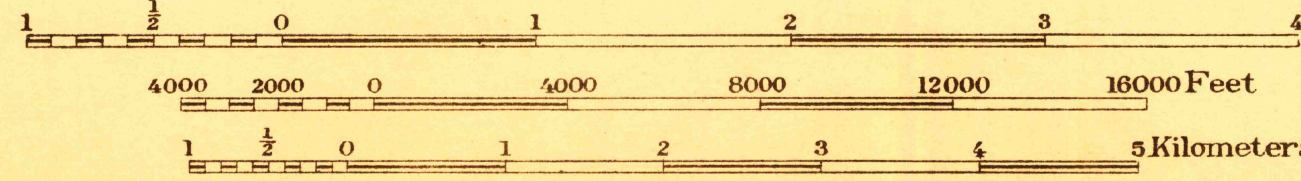
C. H. Birdseye, Chief Topographic Engineer.  
Frank Sutton, Division Topographic Engineer.  
E. I. Ireland, Topographic Engineer in charge.  
Topography by E. I. Ireland, H. R. Kilmer, and J. E. King.  
Control by E. L. McNair, D. H. Watson, E. E. Harris, and F. L. Shalibo.  
Surveyed in 1921

1195000 yards

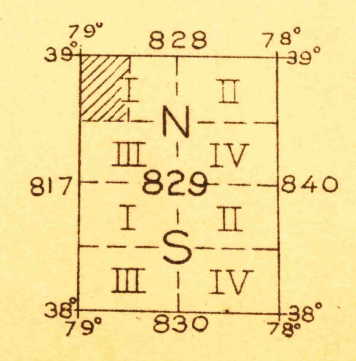


SURVEYED IN COOPERATION WITH THE STATE OF WEST VIRGINIA

(Woodstock 125000)  
Scale 78000



Contour interval 50 feet.  
Datum is mean sea level.



Polyconic projection, North American datum  
5000 yard grid based upon U. S. zone system, B

TRUE NORTH  
MAGNETIC NORTH  
APPROXIMATE MEAN DECLINATION 1921

**FILE COPY**  
RETURN TO CENTRAL FILE

ORKNEY SPRINGS

(Edinburg)

38° 45' 78° 45'

(Woodstock)  
125000