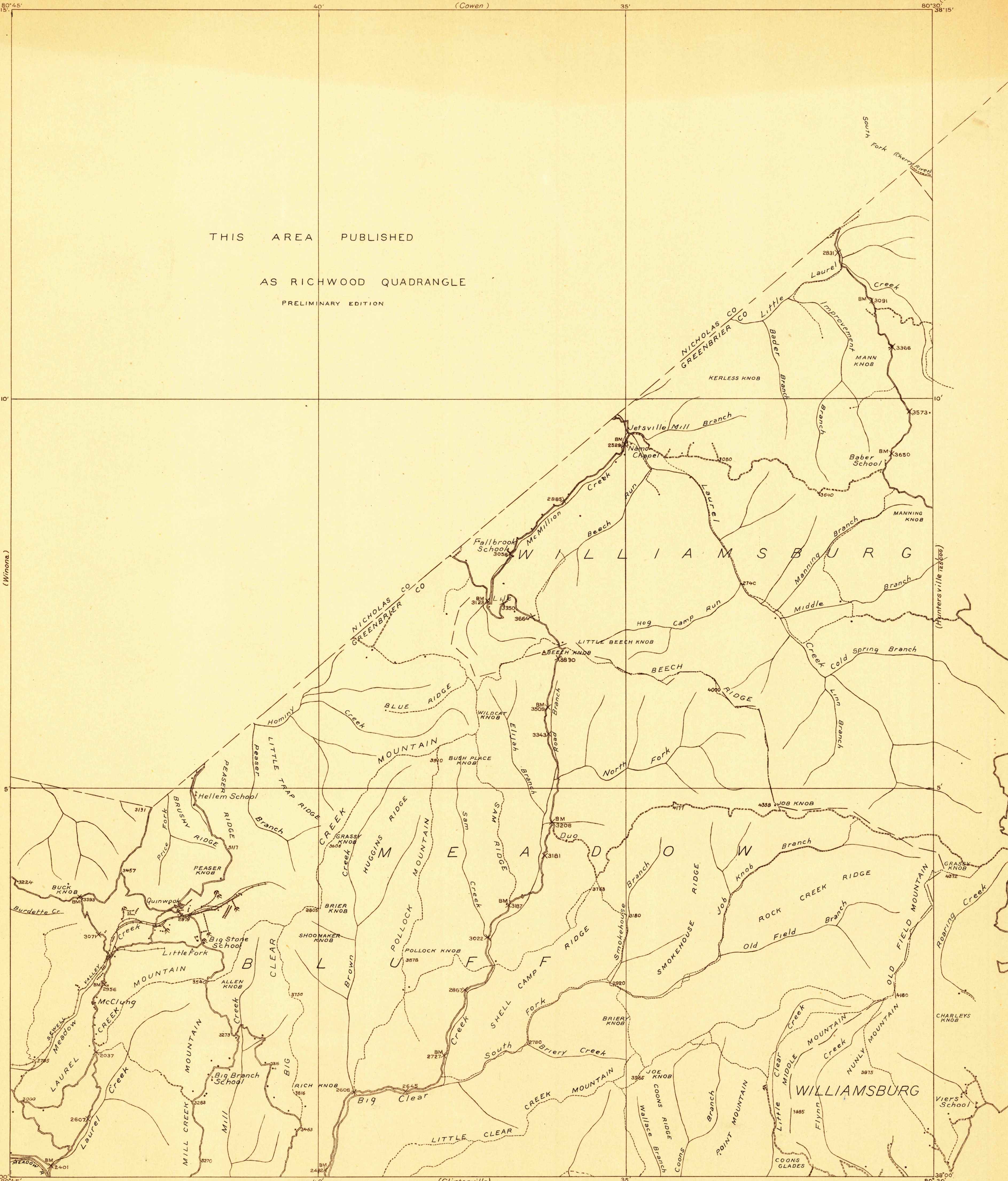
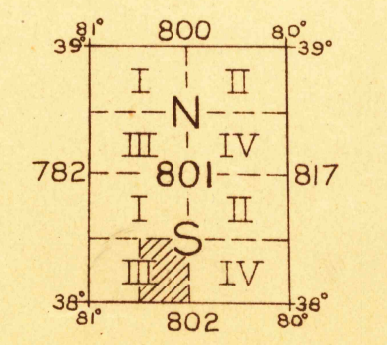
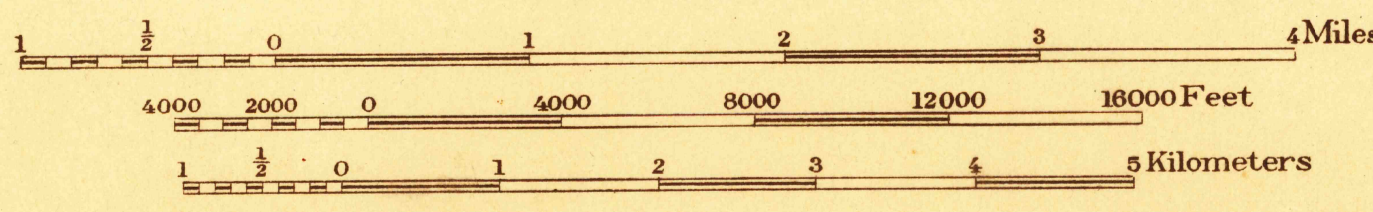


THIS AREA PUBLISHED
AS RICHWOOD QUADRANGLE
PRELIMINARY EDITION



C. H. Birdseye, Chief Topographic Engineer.
Frank Sutton, Division Topographic Engineer.
E. I. Ireland, Topographic Engineer in charge.
Topography by R. C. Seitz, W. K. McKinley, and H. R. Kilmer.
Control by U. S. Coast and Geodetic Survey, Hargraves Wood,
H. P. Kilby, and H. S. Senseney.
Surveyed in 1921



Polyconic projection, North American datum
FILE COPY
RETURN TO CENTRAL FILE
APPROXIMATE MEAN
DECLINATION 1921

Datum is mean sea level.