

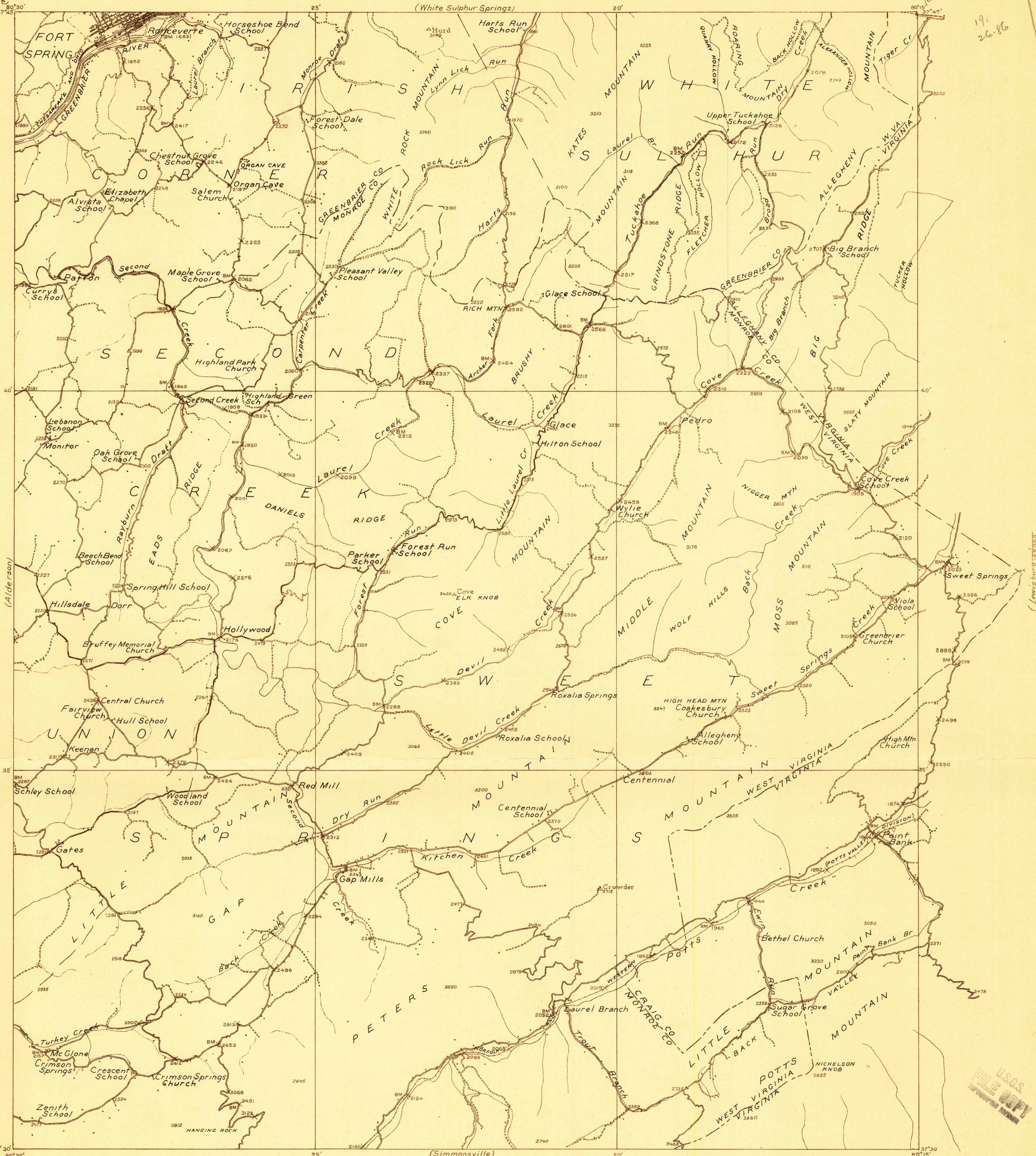
DEPARTMENT OF THE INTERIOR
ALBERT B. FALL, SECRETARY
U. S. GEOLOGICAL SURVEY
GEORGE OTIS SMITH, DIRECTOR

802-N-IV-W/2
TOPOGRAPHY
STATE OF WEST VIRGINIA
I. C. WHITE
STATE GEOLOGIST

Advance sheet.
Subject to correction.

U. S. G. S.
FILE COPY
Inspection and Editing.

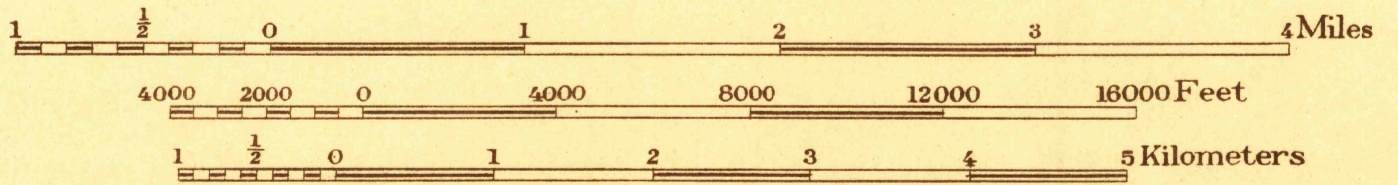
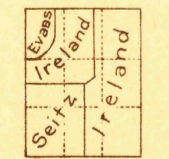
WEST VIRGINIA-VIRGINIA
RONCEVERTE QUADRANGLE



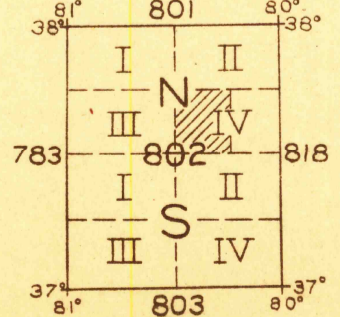
19
26.86

(Clintonville)
37°30' 80°30'
37°45'

C. H. Birdseye, Chief Topographic Engineer
Frank Sutton, Division Topographic Engineer
E. I. Ireland, Topographic Engineer in charge
Topography by E. I. Ireland, R. C. Setz, and R. T. Evans.
Control by E. L. McNair, F. L. Shalibo, C. F. Shalibo, and E. E. Harris.
Surveyed in 1920-1921.



Contour interval 50 feet.
Datum is mean sea level.



(White Sulphur Springs)
25' 20' 80°15' 80°30' 80°45'

Polygonic projection. North American datum.

(Callaghan)

U.S.G.S.
FILE COPY
TOPOGRAPHIC ENGINEER

RONCEVERTE W.Va