

Advance sheet.
Subject to correction.



(Elkins)

(Horton)

(McDowell)

15 Miles

14

13

12

11

10

9

8

7

6

5

4

3

2

1

0

1

(Circleville)

79 45

40

35

79 30

38 45

40

35

38 30

79 30

38 30

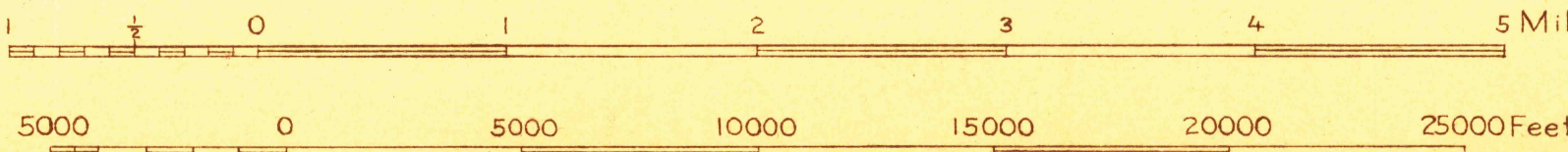
176000 yds

112000 yds

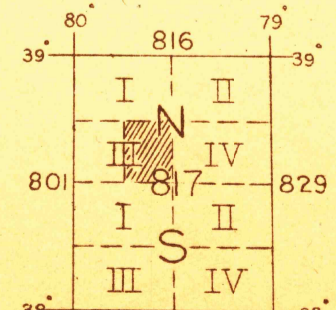
Topography by E. J. Ireland, H. R. Kilmer and W. G. Carson
Surveyed in 1921 and 1922

Polygonic projection, North American datum
5000 yard grid based upon U. S. zone system, B

Scale 48000



Contour interval 50 feet.
Datum is mean sea level.



FILE COPY
RETURN TO CENTRAL FILE

SPRUCE KNOB, W.VA.-VA

APPROXIMATE MEAN
DECLINATION 1922