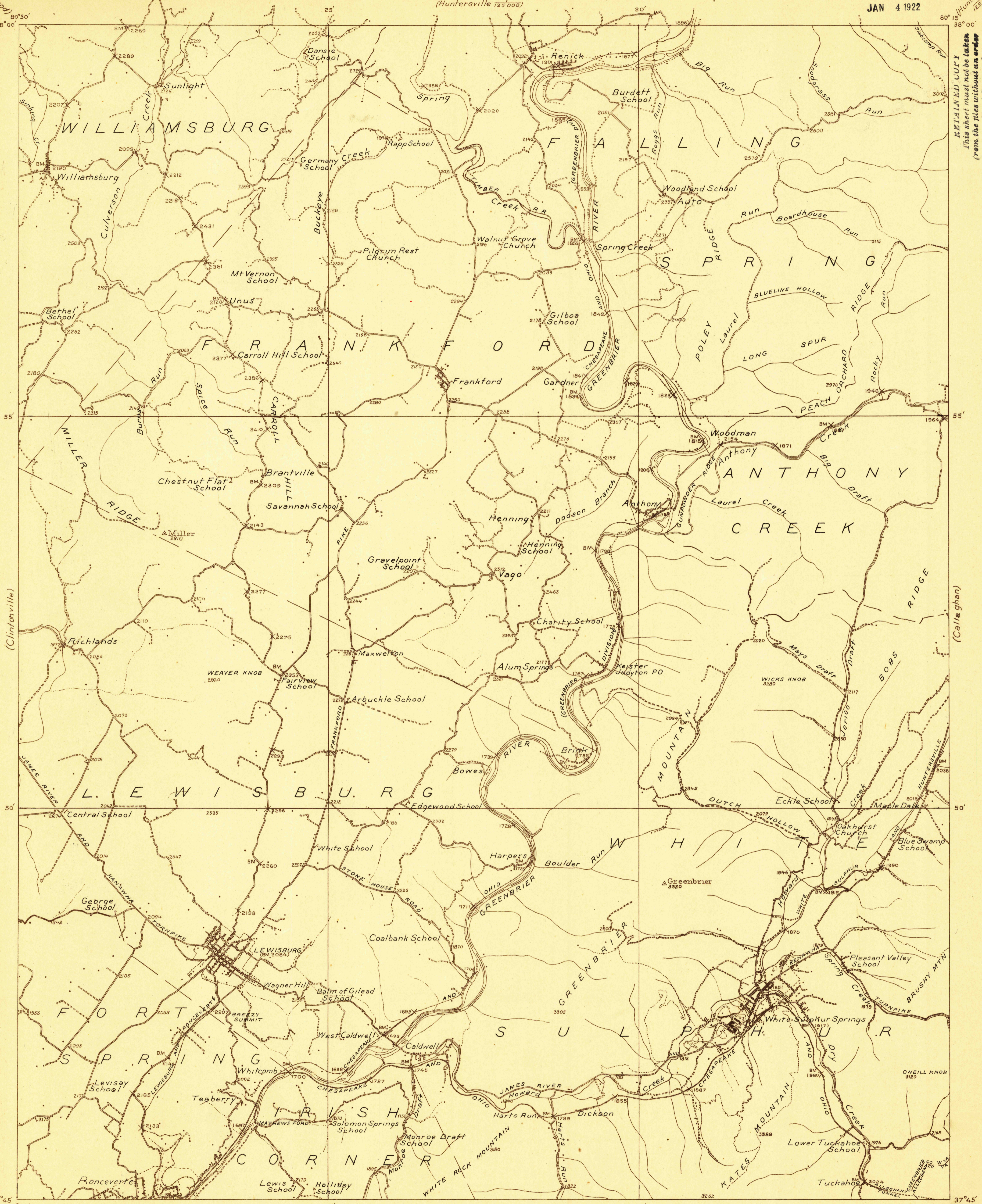


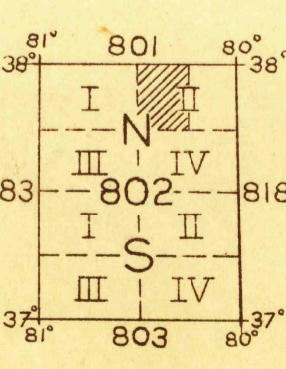
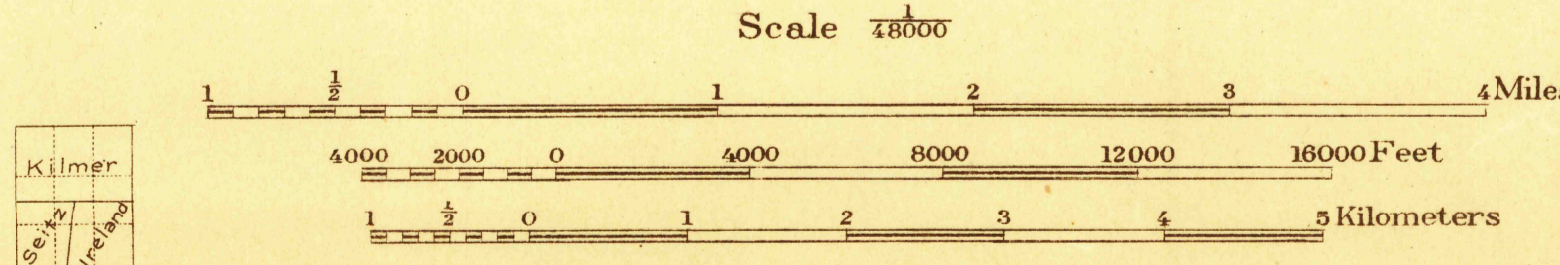
JAN 4 1922

Advance sheet.
Subject to correction.

RETAINED COPY
This sheet must not be taken
from the files without an order
from the Chief Geographer.



C. H. Brinsey, Chief Topographic Engineer.
Frank Sulton, Division Topographic Engineer.
E. J. Ireland, Topographic Engineer in charge.
Topography by E. J. Ireland, R. C. Seitz, and H. R. Kilmer.
Control by E. L. McNair, E. E. Harris, C. F. Shalibo, and C. H. Semper.
Surveyed in 1921



Polyconic projection, North American datum
FILE COPY
RETURN TO CENTRAL FILE
APPROXIMATE MEAN DECLINATION 1921
WHITE SULPHUR SPRINGS

Datum is mean sea level.