

DEPARTMENT OF THE INTERIOR
JOHN BARTON PAYNE, SECRETARY
U.S. GEOLOGICAL SURVEY
GEORGE OTIS SMITH, DIRECTOR

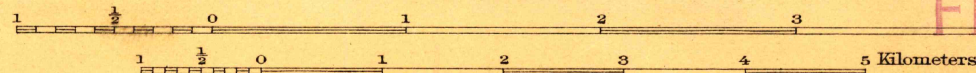
TOPOGRAPHY
STATE OF WEST VIRGINIA
I. C. WHITE
STATE GEOLOGIST
(Martinsburg)

WEST VIRGINIA-VIRGINIA
BERRYVILLE QUADRANGLE



PRELIMINARY EDITION

ENGRAVED 1916 BY U.S.G.S.
R.B. Marshall, Chief Geographer.
Frank Sutton, Geographer in charge.
Topography by T. F. Slaughter.
Control by Geo. T. Hawkins and H.S. Senseney.
Surveyed in 1914.



Contour interval 20 feet.
Datum is mean sea level.

FILE COPY

MAP INFORMATION

Edition of 1916, reprinted 1920.

USGS
Historical File
Topographic Division

BERRYVILLE, W. Va.