

(ELK GARDEN)

WEST VIRGINIA 1:62,500

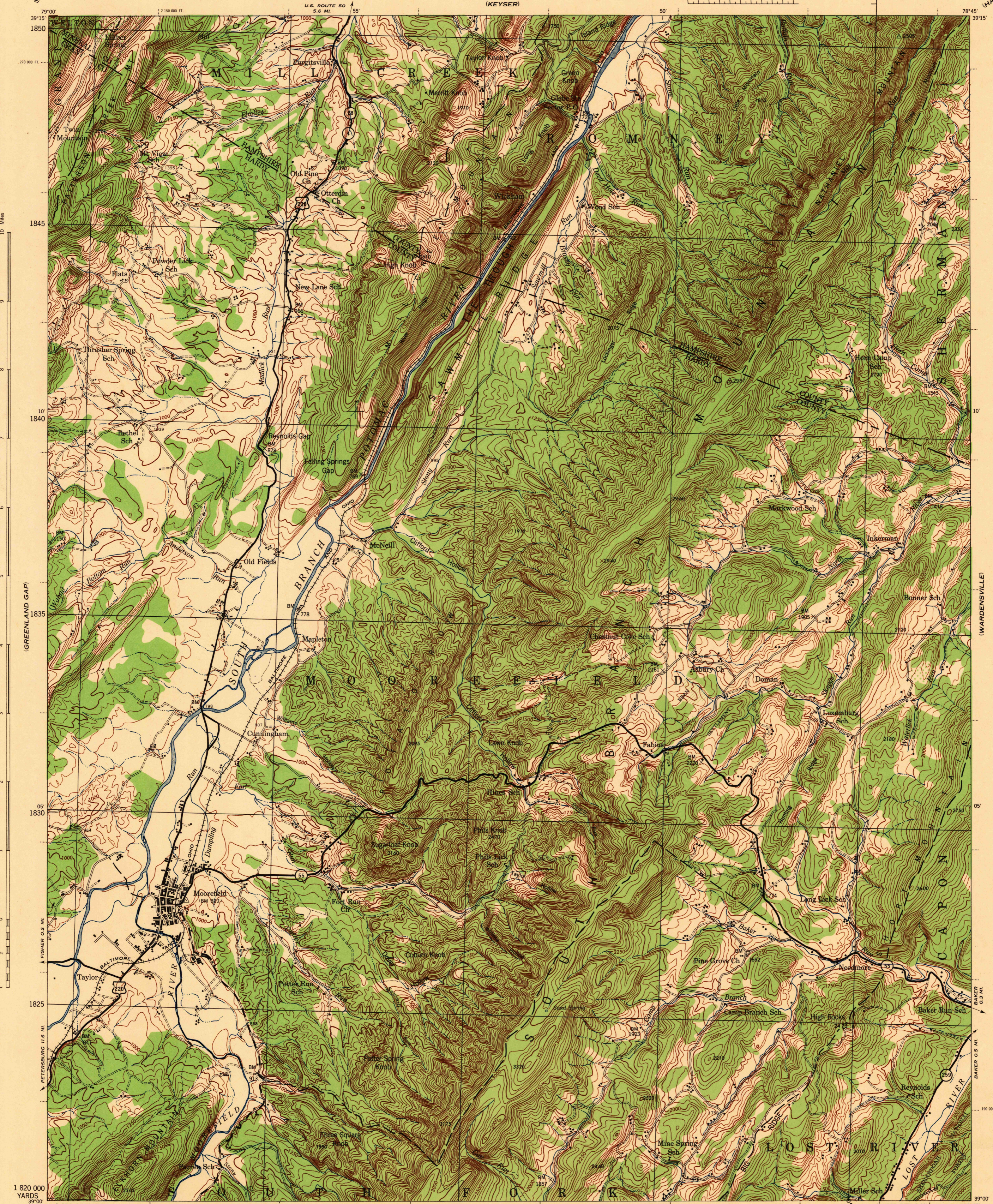
WAR DEPARTMENT  
CORPS OF ENGINEERS, U. S. ARMY

FIRST EDITION-AMS 1

MOOREFIELD QUADRANGLE

15 MINUTE SERIES

(HANGING ROCK)



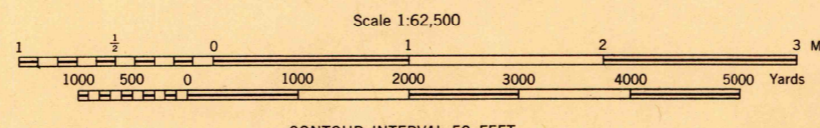
10 Miles  
9  
8  
7  
6  
5  
4  
3  
2  
1  
0  
1  
2  
3  
4  
5  
6  
7  
8  
9  
10 Miles

(PETERSBURG)

1 820 000 YARDS  
1 190 000 YARDS

First Edition (AMS 1), 1945.

Prepared under the direction of the Chief of Engineers, by the Army Map Service (AMS), U. S. Army, Washington, D. C., 1945. Control by U. S. Geological Survey, 1920. Revised from aerial photography for U. S. A. A. F., 1943. Relief compiled from U. S. G. S. Moorefield Quadrangle, 1922. Polyconic Projection, North American Datum.

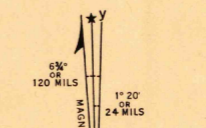


CONTOUR INTERVAL 50 FEET  
DATUM IS MEAN SEA LEVEL

FIVE THOUSAND-YARD GRID COMPUTED FROM GRID SYSTEM FOR PROGRESSIVE MAPS IN THE U. S. ZONE B, U. S. G. S. SPECIAL PUBLICATION NO. 59. THE LAST THREE DIGITS OF THE GRID NUMBERS ARE OMITTED.

WEST VIRGINIA STATE GRID ZONE NORTH IS INDICATED BY DOTTED TICKS OUTSIDE THE NEAT LINE AT 10,000 FOOT INTERVALS.

NOTE. OFFICERS USING THIS MAP WILL MARK HEREON CORRECTIONS AND ADDITIONS WHICH COME TO THEIR ATTENTION AND MAIL DIRECT TO THE CHIEF OF ENGINEERS, WASHINGTON, D. C.



LEGEND  
BRUSH

U. S. G. S.  
FILE COPY  
Inspector of Printing

MOOREFIELD, WEST VIRGINIA  
N3900-W7845/15