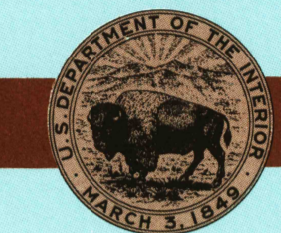




30 X 60 MINUTE QUADRANGLE SHOWING

- Contours and elevations in meters
- Highways, roads and other manmade structures
- Water features
- Woodland areas
- Geographic names



GEOLOGICAL SURVEY

1982

Produced by the United States Geological Survey

Compiled from USGS 1:24 000-scale topographic maps dated 1970-1980. Partially revised from aerial photographs taken 1975-1977 and other source data. Revised information not field checked. Map edited 1982.

Projection and 10 000-meter grid, zone 12 Universal Transverse Mercator. 25 000-foot grid ticks based on Wyoming coordinate system, west zone, 1927 North American datum. To place on the predicted North American Datum 1983 move the projection lines 11 meters north and 61 meters east. There may be private inholdings within the boundaries of the National or State reservations shown on this map.

CONTOUR INTERVAL 50 METERS NATIONAL GEODETIC VERTICAL DATUM OF 1929

THIS MAP COMPLIES WITH NATIONAL MAP ACCURACY STANDARDS

FOR SALE BY U.S. GEOLOGICAL SURVEY, P.O. BOX 25286, DENVER, COLORADO, 80225

CONVERSION TABLE		DECLINATION DIAGRAM		ADJOINING MAPS		
Meters	Feet	Meters	Feet	1	2	3
1	3.2808	0°	0'	4	5	6
2	6.5617	15°	15'	7	8	
3	9.8425	30°	30'			
4	13.1234	45°	45'			
5	16.4042	60°	00'			
6	19.6850	75°	15'			
7	22.9659	90°	30'			
8	26.2467					
9	29.5276					
10	32.8084					

To convert meters to feet multiply by 3.2808  
To convert feet to meters multiply by 0.3048

UTM grid convergence (GN) and 1982 magnetic declination (MD) at center of map  
Diagram is approximate

1	Pallades
2	Jackson
3	Gannett Peak
4	Snake Springs
5	Pinedale
6	Preston
7	Fontenelle Reservoir
8	Parson

RECEIVED MAY 2002

USGS NMU HISTORICAL MAP ARCHIVES

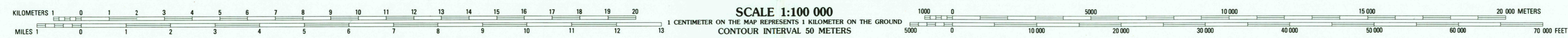
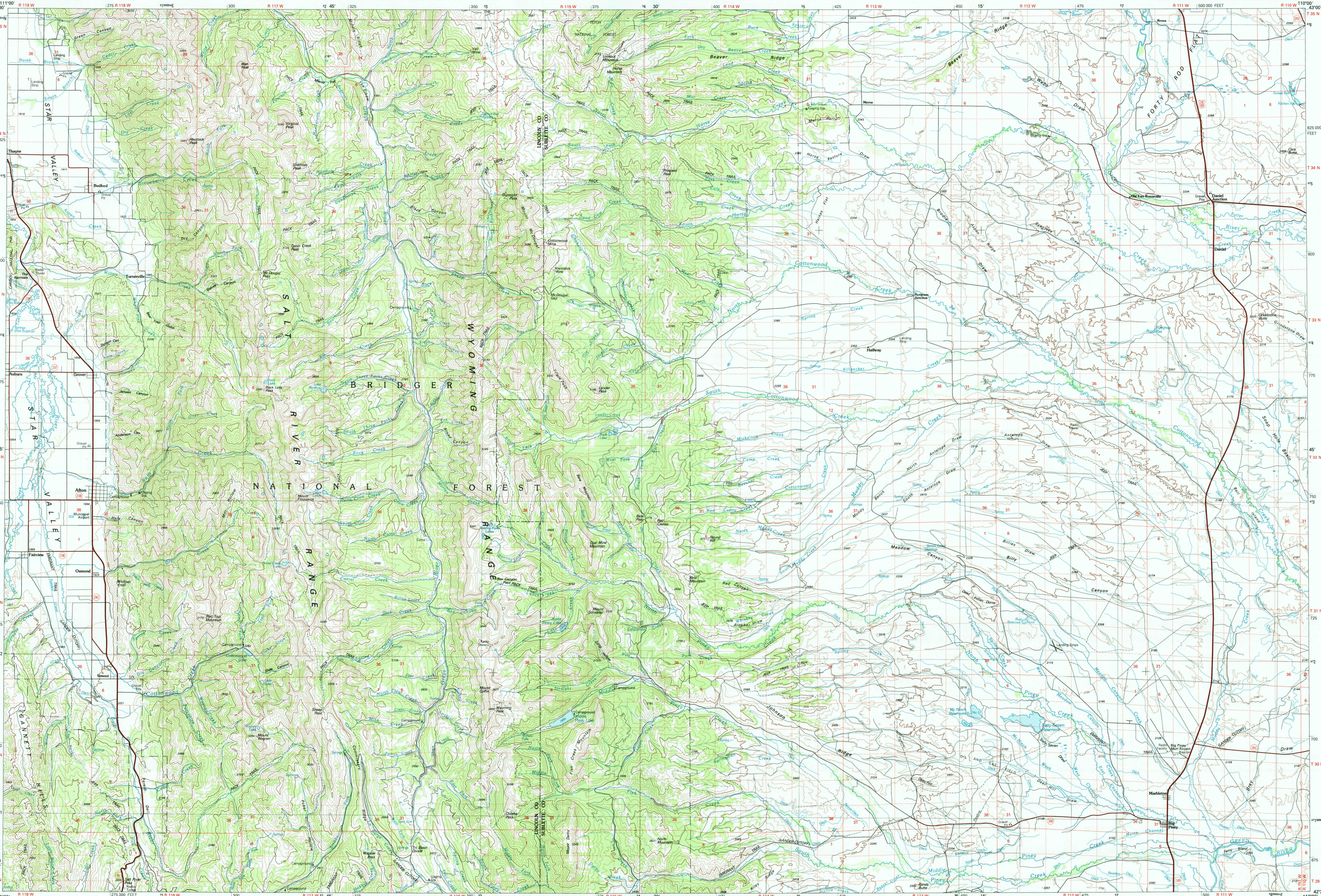
Topographic Map Symbols

- Primary highway, hard surface
- Secondary highway, hard surface
- Light duty road, principal street, hard or improved surface
- Other road or street, trail
- Route marker: Interstate, U. S., State
- Railroad: standard gage; narrow gage
- Bridge; overpass; underpass
- Tunnel: road; railroad
- Built up area; building; abutment
- Airport; landing field; landing strip
- National boundary
- State boundary
- County boundary
- National or State reservation boundary
- Land grant boundary
- U. S. public lands survey: range, township, section
- Range, township; section line; protracted
- Power transmission line; pipeline
- Dam; dam with lock
- Cemetery; building
- Windmill; water well; spring
- Mine shaft; adit or cave; mine, quarry; gravel pit
- Campground; picnic area; U. S. location monument
- Ruins; cliff dwelling
- Distorted surface: strip mine, lava; sand
- Contours: index; intermediate; supplementary
- Bathymetric contours: index; intermediate
- Stream, lake, perennial; intermittent
- Swamp, bog and marsh; salt, brackish and small
- Area to be submerged; marsh, swamp
- Land subject to controlled inundation; woodland
- Scrub; mangrove
- Orchard; vineyard

A pamphlet describing topographic maps is available on request.



10% RECYCLED PAPER



SCALE 1:100 000

1 CENTIMETER ON THE MAP REPRESENTS 1 KILOMETER ON THE GROUND

CONTOUR INTERVAL 50 METERS

AFTON, WYOMING N4230-W11000/30x60

1982