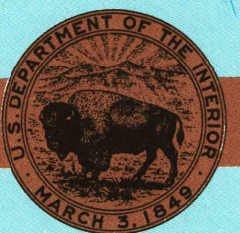




30 X 60 MINUTE QUADRANGLE
SHOWING

- Contours and elevations in meters
- Highways, roads and other manmade structures
- Water features
- Woodland areas
- Geographic names



GEOLOGICAL SURVEY

1979

Produced by the United States Geological Survey

Compiled from USGS 1:24 000-scale topographic maps dated 1951-1962. Partially revised from aerial photographs taken 1977 and other source data. Revised information not field checked. Map edited 1979.

Projection and 10 000-meter grid, zone 13: Universal Transverse Mercator. 25 000-foot grid ticks based on Wyoming coordinate system, east central and west central zones. 1927 North American datum. To place on the predicted North American Datum 1983 move the projection lines 8 meters north and 52 meters east. There may be private inholdings within the boundaries of the National or State reservations shown on this map.

CONTOUR INTERVAL 20 METERS
NATIONAL GEODETIC VERTICAL DATUM OF 1929

THIS MAP COMPLIES WITH NATIONAL MAP ACCURACY STANDARDS

CONVERSION TABLE		DECLINATION DIAGRAM	ADJOINING MAPS				
Meters	Feet		1	2	3	4	5
1	3.2808		1	2	3	4	5
2	6.5617						
3	9.8425						
4	13.1234						
5	16.4042						
6	19.6850						
7	22.9659						
8	26.2467						
9	29.5276						
10	32.8084						
To convert meters to feet multiply by 3.2808		UTM grid convergence (GN) and 1979 magnetic declination (MN) at center of map. Diagram is approximate.					
To convert feet to meters multiply by 0.3048							

FOR SALE BY U. S. GEOLOGICAL SURVEY, DENVER, COLORADO 80225
OR RESTON, VIRGINIA 22092

Topographic Map Symbols

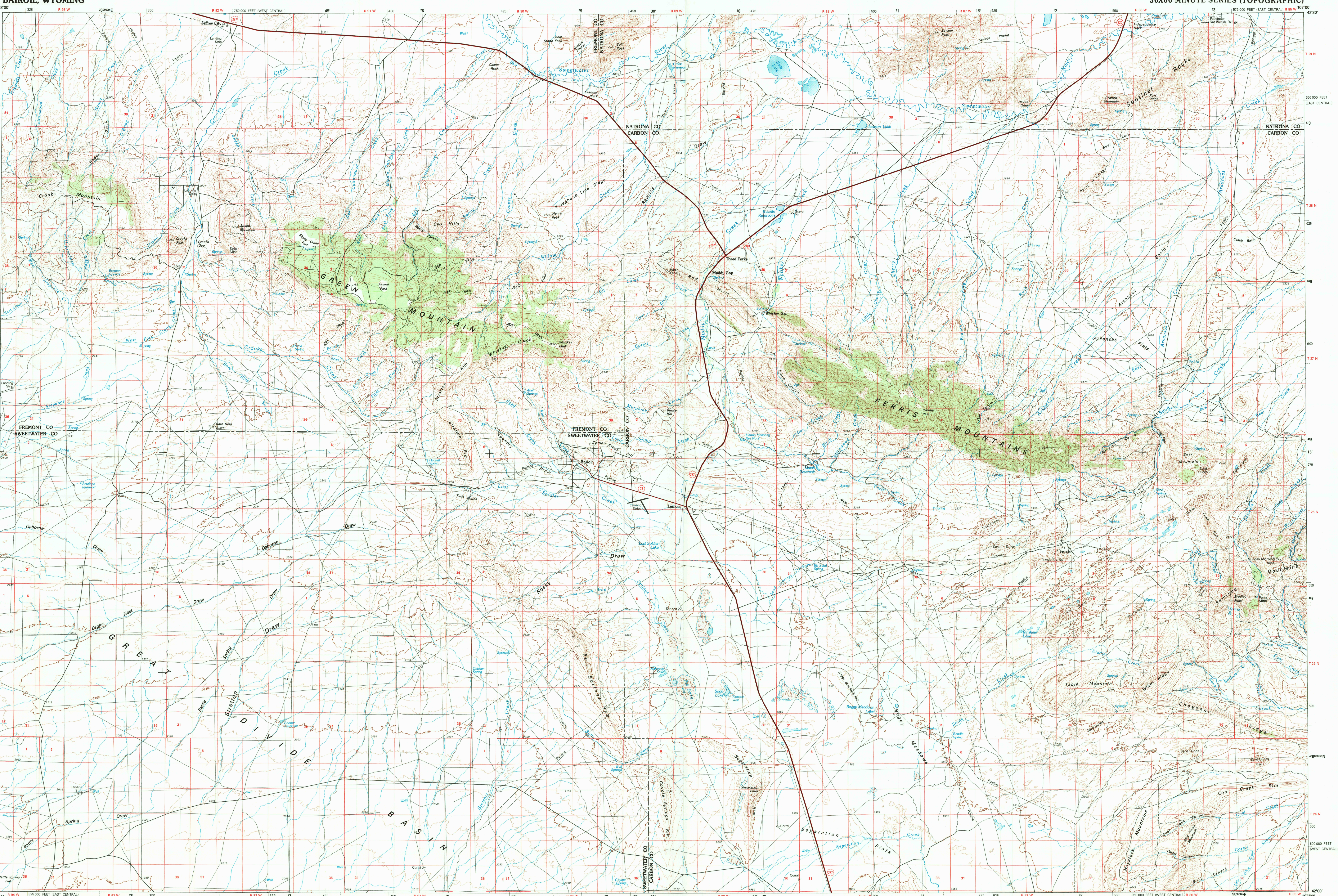
Primary highway, hard surface	
Secondary highway, hard surface	
Light duty road, principal street, hard or improved surface	
Other road or street, trail	
Route marker: Interstate, U. S., State	
Railroad: standard gage, narrow gage	
Bridge: overpass, underpass	
Tunnel: road, railroad	
Built up area, locality, elevation	
Airport, landing field, landing strip	
National boundary	
State boundary	
County boundary	
National or State reservation boundary	
Land grant boundary	
U. S. public lands survey: range, township, section	
Ramp, trestle, section line, protected	
Power transmission line, pipeline	
Dam; dam with lock	
Cemetery, building	
Windmill, water well, spring	
Mine shaft, adit or cave, mine, quarry, gravel pit	
Compassing, picnic area, U. S. location monument	
Ruin, cliff dwelling	
Distorted surface: strip mine, lava, sand	
Bathymetric contours: index, intermediate	
Stream, lake, perennial, intermittent	
Reefs, large and small; bolls, large and small	
Area to be submerged: marsh, swamp	
Land subject to controlled inundation; woodland	
Scrub, mangrove	
Orchard; vineyard	

A pamphlet describing topographic maps is available on request

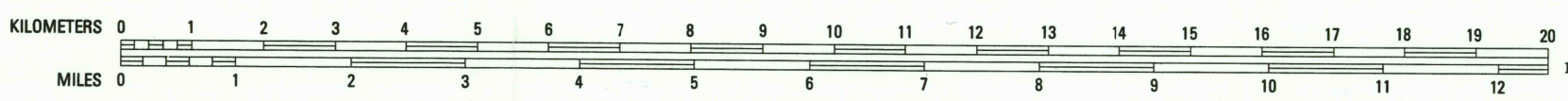


BAIROIL, WYOMING
N4200-W10700/30x60

1979



INTERIOR—GEOLOGICAL SURVEY, RESTON, VIRGINIA—1980



SCALE 1:100 000

1 CENTIMETER ON THE MAP REPRESENTS 1 KILOMETER ON THE GROUND
CONTOUR INTERVAL 20 METERS

