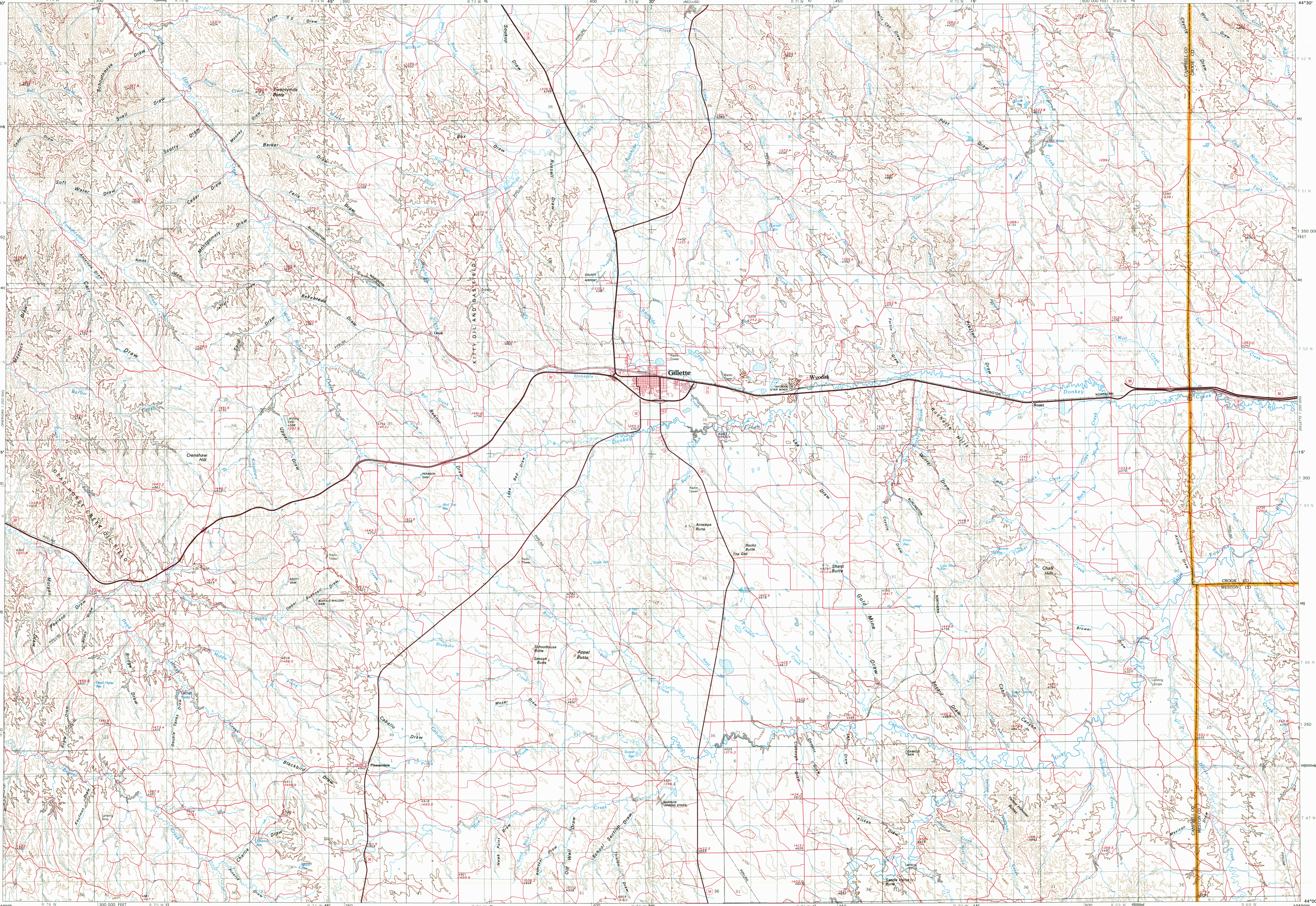


FILE COPY



Maped, edited, and published by the Geological Survey

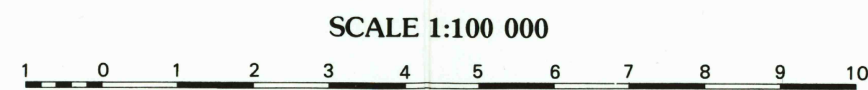
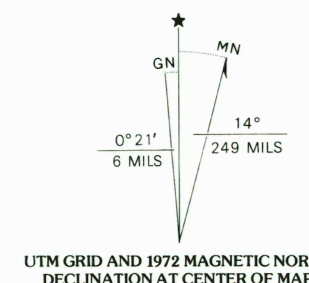
Compiled in 1974 from USGS 1:24 000-scale topographic maps  
dated 1971-1972. See index for dates of individual maps

Projection and 10 000-metre grid, zone 13: Universal  
Transverse Mercator, 1927 North American datum  
50 000-foot grid ticks based on Wyoming coordinate  
system, east zone

INDEX TO 1:24 000-SCALE MAPS

1	2	3	4	5	6	7	8
9	10	11	12	13	14	15	16
17	18	19	20	21	22	23	24
25	26	27	28	29	30	31	32

1. Cretaceous—1971	17. Mesozoic—1971
2. Tertiary—1971	18. Quaternary—1971
3. Quaternary—1971	19. Quaternary—1971
4. Quaternary—1971	20. Quaternary—1971
5. Quaternary—1971	21. Quaternary—1971
6. Quaternary—1971	22. Quaternary—1971
7. Quaternary—1971	23. Quaternary—1971
8. Quaternary—1971	24. Quaternary—1971
9. Quaternary—1971	25. Quaternary—1971
10. Quaternary—1971	26. Quaternary—1971
11. Quaternary—1971	27. Quaternary—1971
12. Quaternary—1971	28. Quaternary—1971
13. Quaternary—1971	29. Quaternary—1971
14. Quaternary—1971	30. Quaternary—1971
15. Quaternary—1971	31. Quaternary—1971
16. Quaternary—1971	32. Quaternary—1971



CONTOUR INTERVAL 100 FEET  
NATIONAL GEODETIC VERTICAL DATUM OF 1929

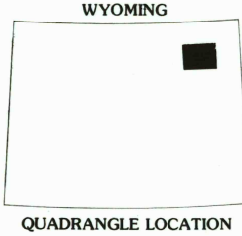
This map complies with national map accuracy standards  
FOR SALE BY U.S. GEOLOGICAL SURVEY, DENVER, COLORADO 80225, OR RESTON, VIRGINIA 22092

CONTOUR VALUES  
CONVERSION TABLE

Feet	Meters
5000	1524.0
4000	1219.2
3000	914.4
2000	609.6
1000	304.8
500	152.4
200	60.96
100	30.48
50	15.24
20	6.096
10	3.048
5	1.524
2	0.6096
1	0.3048

Meters equal feet  
times 0.3048

More elevations  
shown in 10'



LEGEND

Perennial stream, lake	Intermittent stream, lake
Village or locality	Landmark structure
Public park or recreation area	Forest or game land area
Other public area	Military or Indian reservation

ROAD CLASSIFICATION

Primary highway, hard surface	Secondary highway, hard surface
Light-duty road, hard or improved surface	Unimproved road
Trail	Interstate route
U.S. route	State route

GILLETTE, WYOMING  
SW 4 GILLETTE (N. 13-1) 1:250 000 SCALE MAP  
N4400-W10500/30X60  
1972

EXPERIMENTAL PRINTING

RETURN TO:  
USGS NATIONAL MAP ARCHIVES  
RESTON, VA 22092