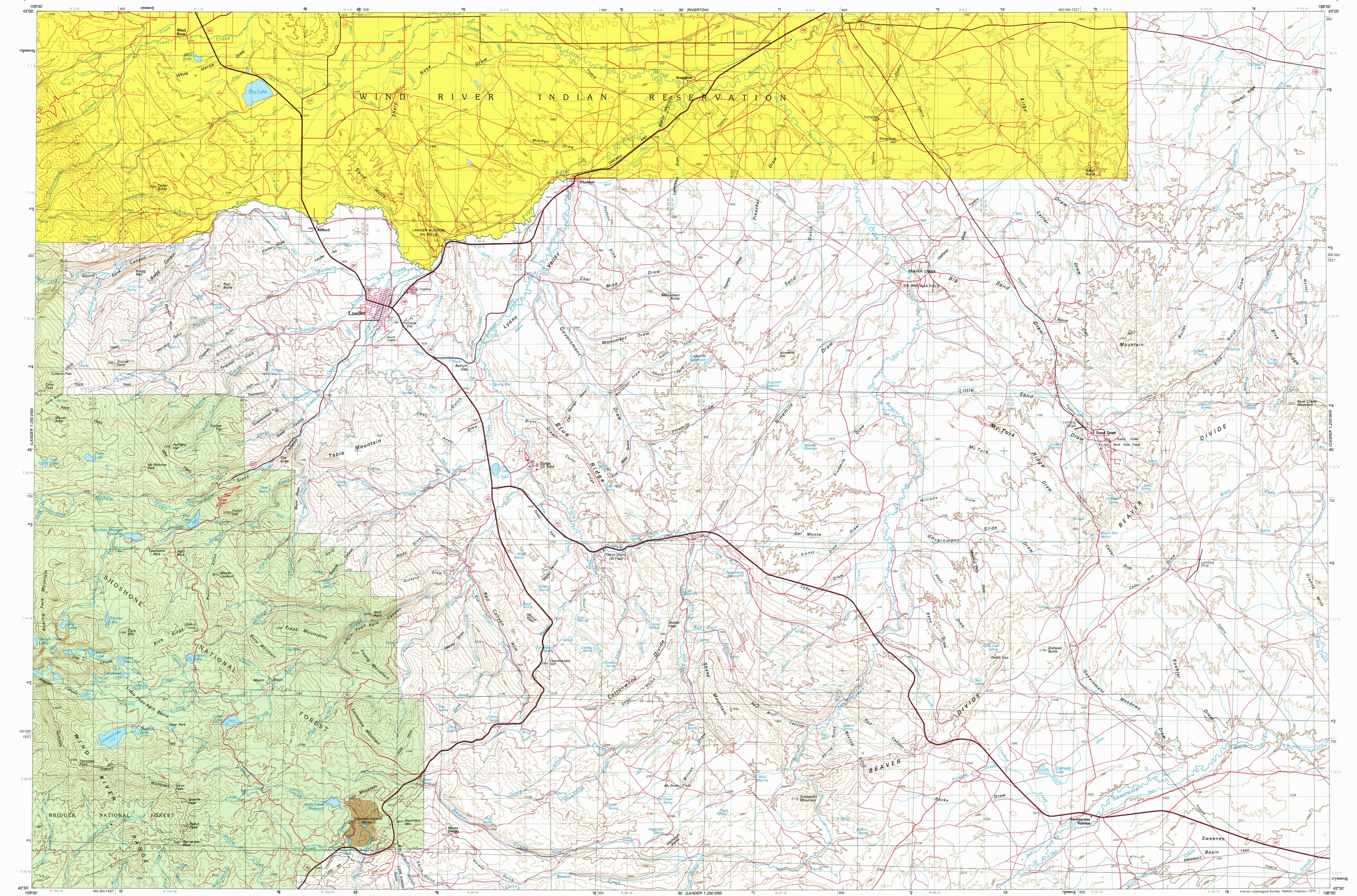


(GANNETT PLAN)

UNITED STATES
DEPARTMENT OF THE INTERIOR
GEOLOGICAL SURVEY

LANDER QUADRANGLE
WYOMING—FREMONT CO.
1:100 000-SCALE SERIES (TOPOGRAPHIC)

(AMMTC 1:250 000)

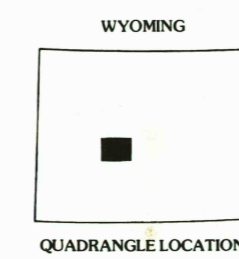
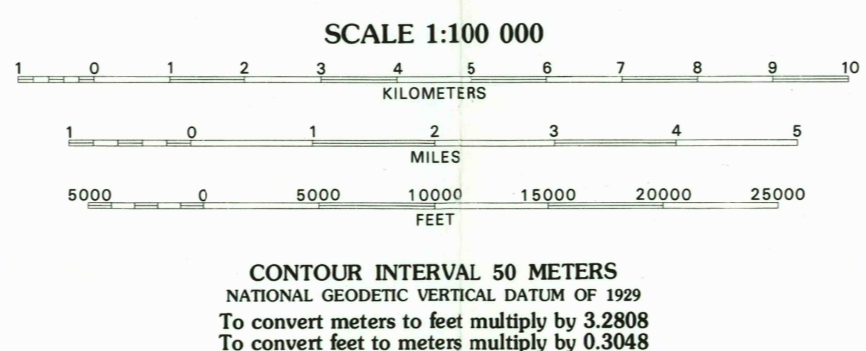
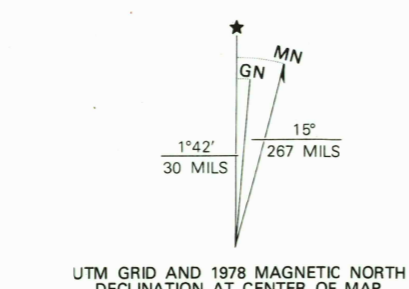


(LANDER 1:250 000)

Produced by the Geological Survey
in cooperation with the Soil Conservation Service
Compiled from USGS 1:24 000-scale topographic maps
dated 1951-1960. See index for dates of individual maps.
Partially revised from aerial photographs taken 1975 and
other source data. Revised information not field checked.
Map edited 1978.
Projection and 10 000-meter grid, zone 12
Universal Transverse Mercator
50 000-foot grid ticks based on Wyoming coordinate
system, west central zone, 1927 North American datum.
There may be private inholdings within the boundaries of
the National or State reservations shown on this map.

MAP INDEX															
1	2	3	4	5	6	7	8	9	10	11	12	13	14	15	16
17	18	19	20	21	22	23	24	25	26	27	28	29	30	31	32

- 1 Wind River-1952
2 Fly Lake-1952
3 Lander NW-1952
4 Hutton-1952
5 Anapahoe NE-1958
6 Altamont-1958
7 Campbell Ridge-1953
8 Mount Arden-1953
9 Lander-1953
10 Lander SE-1953
11 Lander SW-1953
12 Lander SW-1953
13 Lander SW-1953
14 Lander SW-1953
15 Lander SW-1953
16 Lander SW-1953
17 Cory Mountain-1953
18 Fly Lake-1953
19 Fly Lake-1953
20 Fly Lake-1953
21 Fly Lake-1953
22 Fly Lake-1953
23 Fly Lake-1953
24 Fly Lake-1953
25 Fly Lake-1953
26 Fly Lake-1953
27 Fly Lake-1953
28 Fly Lake-1953
29 Fly Lake-1953
30 Fly Lake-1953
31 Fly Lake-1953
32 Fly Lake-1953



LEGEND

Perennial stream, lake
Intermittent stream, lake
Village or locality
Landmark structure
Public park or recreation area
Forest or game land area
Other public area or
Military or Indian reservation

ROAD CLASSIFICATION

Primary highway, hard surface
Secondary highway, hard surface
Light-duty road, hard or improved surface
Street or other road
Trail
U.S. route
State route

USGS AND HISTORICAL MAP ARCHIVES

JAN 1996
REC'D FILE COPY

LANDER, WYOMING

N4230-W10800/30x60
1978