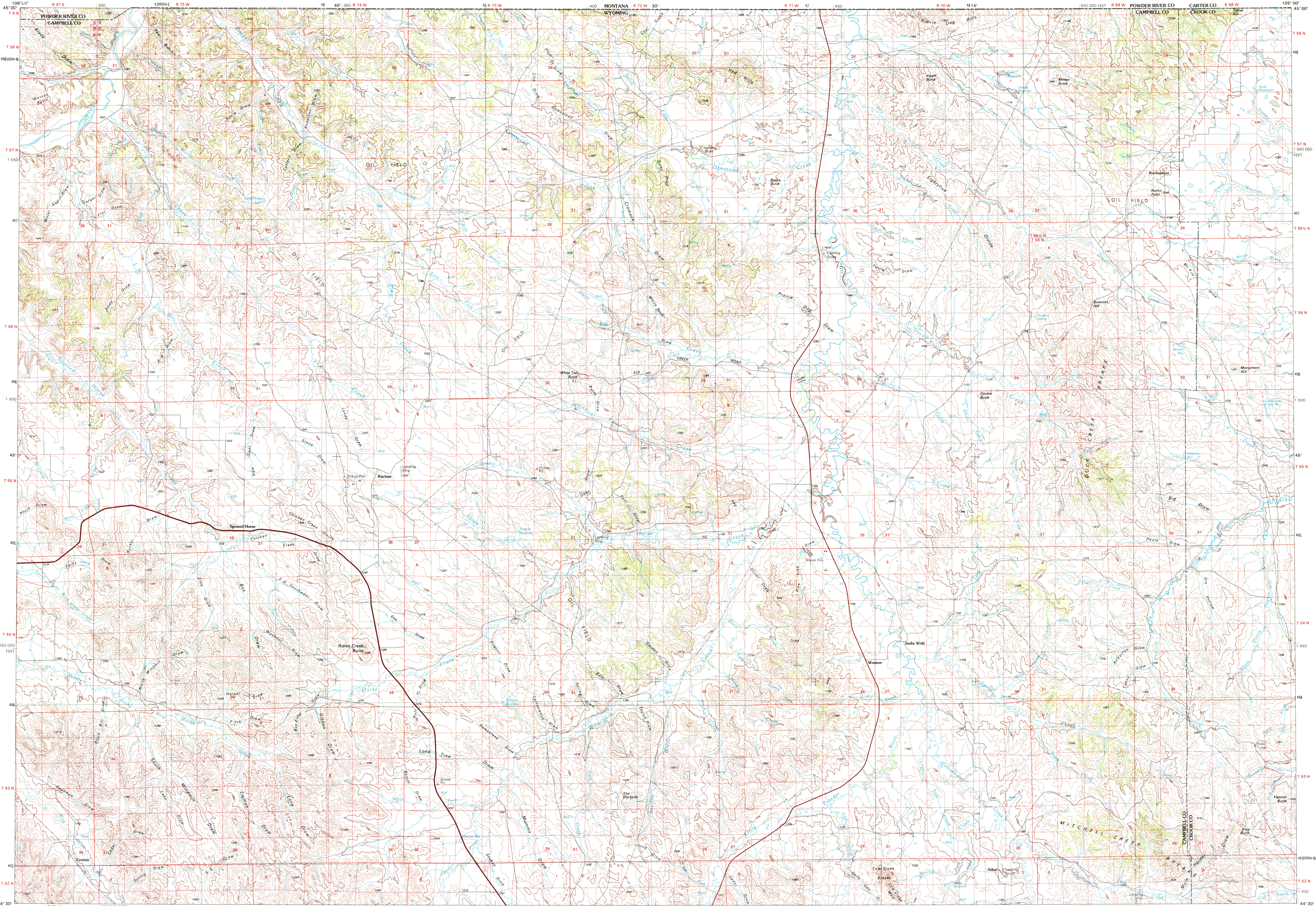


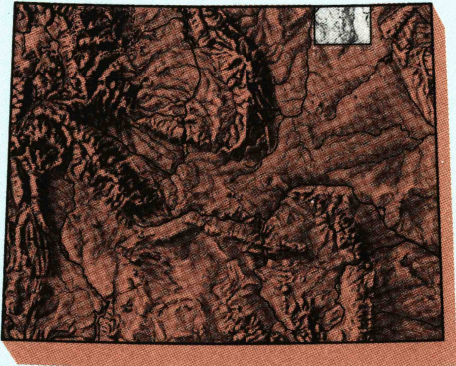
RECLUSE, WYOMING-MONTANA

30X60 MINUTE SERIES (TOPOGRAPHIC)



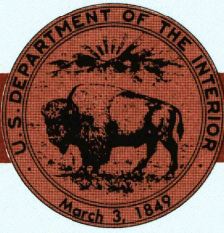
Recluse
WYOMING-MONTANA

1:100 000-scale *metric*
topographic map



30 X 60 MINUTE QUADRANGLE
SHOWING

- Contours and elevations in meters
- Highways, roads and other manmade structures
- Water features
- Woodland areas
- Geographic names



GEOLOGICAL SURVEY

1975

Produced by the United States Geological Survey

Compiled from USGS 1:24 000-scale topographic maps dated 1971-1972. Planimetry revised from other source data. Revised information not field checked Map edited 1975

1927 North American Datum (NAD 27). Projection and 10 000-meter grid: Universal Transverse Mercator, zone 13 50 000-foot ticks: Wyoming coordinate system, east zone The difference between NAD 27 and North American Datum of 1983 (NAD 83) is too small to show at this scale. The values of the shift between the datums for 7.5-minute intersections are given in USGS Bulletin 1875

CONTOUR INTERVAL 20 METERS
NATIONAL GEODETIC VERTICAL DATUM OF 1929
ELEVATIONS SHOWN TO THE NEAREST METER

THIS MAP COMPLIES WITH NATIONAL MAP ACCURACY STANDARDS

CONVERSION TABLE		DECLINATION DIAGRAM	ADJOINING MAPS		
Meters	Feet		1	2	3
1	3.2808		4		5
2	6.5617				
3	9.8425				
4	13.1234				
5	16.4042				
6	19.6850				
7	22.9659				
8	26.2467				
9	29.5275				
10	32.8084				
To convert meters to feet multiply by 3.2808		UTM grid convergence (GM) and 1975 magnetic declination (MD) at center of map Diagram is approximate			
To convert feet to meters multiply by 0.3048					
				1	2
				3	4
				5	6
				7	8
				9	10
				11	12
				13	14
				15	16
				17	18
				19	20
				21	22
				23	24
				25	26
				27	28
				29	30
				31	32
				33	34
				35	36
				37	38
				39	40
				41	42
				43	44
				45	46
				47	48
				49	50
				51	52
				53	54
				55	56
				57	58
				59	60
				61	62
				63	64
				65	66
				67	68
				69	70
				71	72
				73	74
				75	76
				77	78
				79	80
				81	82
				83	84
				85	86
				87	88
				89	90
				91	92
				93	94
				95	96
				97	98
				99	100
				101	102
				103	104
				105	106
				107	108
				109	110
				111	112
				113	114
				115	116
				117	118
				119	120
				121	122
				123	124
				125	126
				127	128
				129	130
				131	132
				133	134
				135	136
				137	138
				139	140
				141	142
				143	144
				145	146
				147	148
				149	150
				151	152
				153	154
				155	156
				157	158
				159	160
				161	162
				163	164
				165	166
				167	168
				169	170
				171	172
				173	174
				175	176
				177	178
				179	180
				181	182
				183	184
				185	186
				187	188
				189	190
				191	192
				193	194
				195	196
				197	198
				199	200
				201	202
				203	204
				205	206
				207	208
				209	210
				211	212
				213	214
				215	216
				217	218
				219	220
				221	222
				223	224
				225	226
				227	228
				229	230
				231	232
				233	234
				235	236
				237	238
				239	240
				241	242
				243	244
				245	246
				247	248
				249	250
				251	252
				253	254
				255	256
				257	258
				259	260
				261	262
				263	264
				265	266
				267	268
				269	270
				271	272
				273	274
				275	276
				277	278
				279	280
				281	282
				283	284
				285	286
				287	288
				289	290
				291	292
				293	294
				295	296
				297	298
				299	300
				301	302
				303	304
				305	306
				307	308
				309	310
				311	312
				313	314
				315	316
				317	318
				319	320
				321	322
				323	324
				325	326
				327	328
				329	330
				331	332
				333	334
				335	336
				337	338
				339	340
				341	342
				343	344
				345	346
				347	348
				349	350
				351	352
				353	354
				355	356
				357	358
				359	360
				361	362
				363	364
				365	366
				367	368
				369	370
				371	372
				373	374
				375	376
				377	378
				379	380
				381	382
				383	384
				385	386
				387	388
				389	390
				391	392
				393	394
				395	396
				397	398
				399	400
				401	402
				403	404
				405	406
				407	408
				409	410
				411	412
				413	414
				415	416
				417	418
				419	420
				421	422
				423	424
				425	426
				427	428
				429	430
				431	432
				433	434
				435	436
				437	438
				439	440
				441	442
				443	444
				445	446
				447	448
				449	450
				451	452
				453	454
				455	456
				457	458
				459	460
				461	462
				463	464
				465	466
				467	468
				469	470
				471	472
				473	474
				475	476
				477	478
				479	480
				481	482
				483	484
				485	486
				487	488
				489	490
				491	492
				493	494
				495	496
				497	498
				499	500
				501	502
				503	504
				505	506
				507	508
				509	510
				511	512
				513	514
				515	516
				517	518
				519	520
				521	522
				523	524
				525	526
				527	528
				529	530
				531	532
				533	534
				535	536
				537	538
				539	540
				541	542
				543	544
				545	546
				547	548
				549	550
				551	552
				553	554
				555	556
				557	558
				559	560
				561	562
				563	564
				565	566
				567	568
				569	570
				571	572
				573	574
				575	576
				577	578
				579	580
				581	582
				583	584
				585	586
				587	588
				589	590
				591	592
				593	594
				595	596
				597	598
				599	600
				601	602
				603	604
				605	606
				607	608
				609	610
				611	612
				613	614
				615	616
				617	618
				619	620
				621	622
				623	624
				625	626
				627	628
				629	630
				631	632
				633	634
				635	636
				637	638
				639	640
				641	642
				643	644
				645	646
				647	648
				649	650
				651	652
				653	654
				655	656
				657	658
				659	660
				661	662
				663	664
				665	666
				667	668
				669	670
				671	672
				673	674
				675	676
				677	678
				679	680
				681	682
				683	684
				685	686
				687	688
				689	690
				691	692
				693	694
				695	696
				697	698