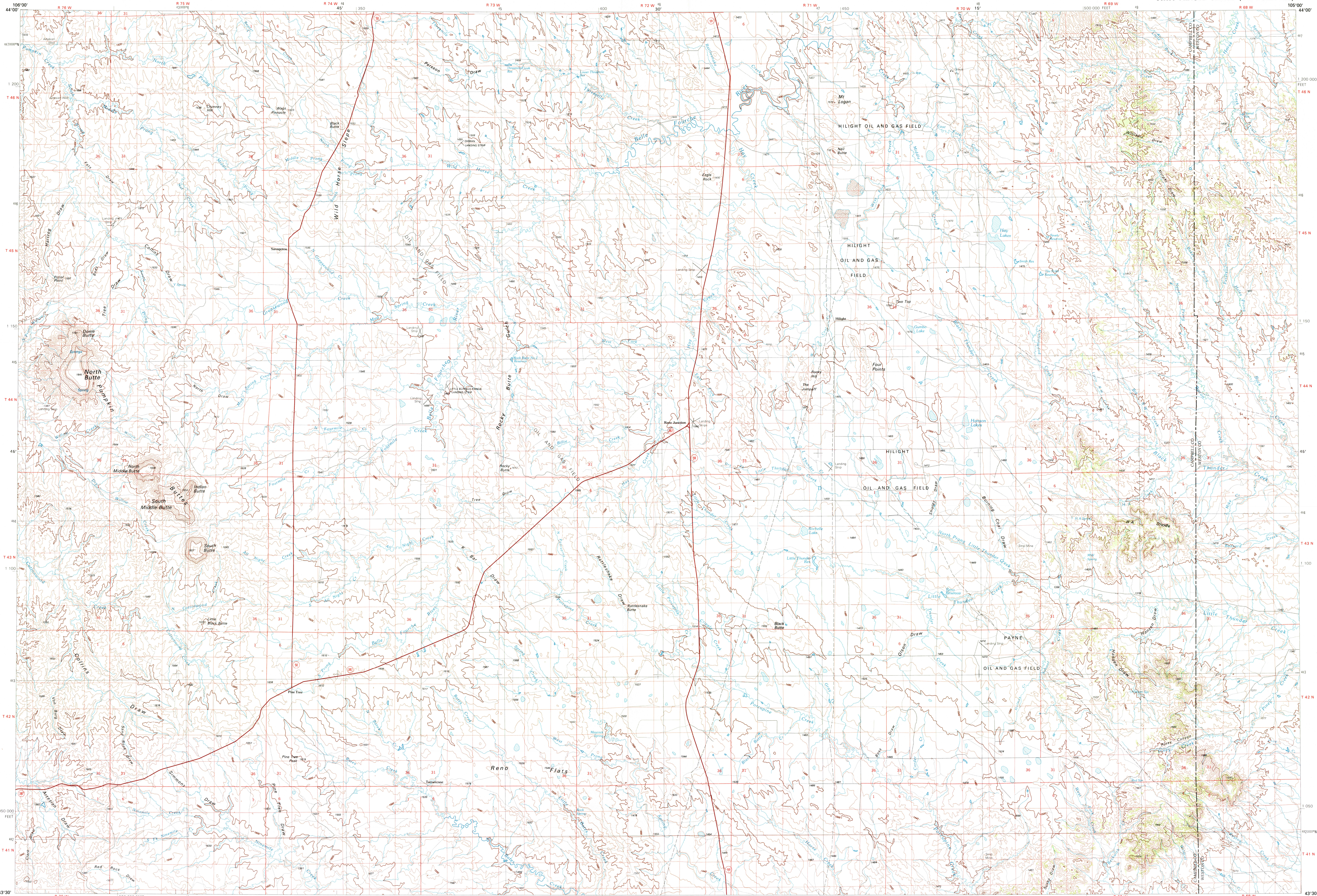


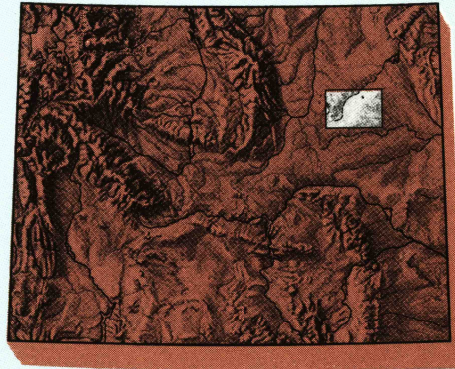
RENO JUNCTION, WYOMING

30X60 MINUTE SERIES (TOPOGRAPHIC)



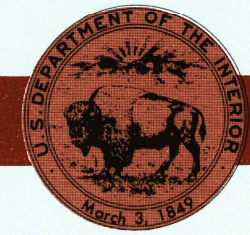
Reno Junction
WYOMING

1:100 000-scale *metric*
topographic map



30 X 60 MINUTE QUADRANGLE
SHOWING

- Contours and elevations in meters
- Highways, roads and other manmade structures
- Water features
- Woodland areas
- Geographic names



GEOLOGICAL SURVEY

1974

Produced by the United States Geological Survey

Compiled from USGS 1:24 000-scale topographic maps dated 1953-1972. Planimetry revised from aerial photographs taken 1973-74 and other source data. Revised information not field checked. Map edited 1974

1927 North American Datum (NAD 27). Projection and 10 000-meter grid: Universal Transverse Mercator, zone 13 50 000-foot ticks: Wyoming coordinate system, east zone The difference between NAD 27 and North American Datum of 1983 (NAD 83) is too small to show at this scale. The values of the shift between the datums for 7.5-minute intersections are given in USGS Bulletin 1875

There may be private inholdings within the boundaries of the National or State reservations shown on this map

CONTOUR INTERVAL 20 METERS
NATIONAL GEODETIC VERTICAL DATUM OF 1929
ELEVATIONS SHOWN TO THE NEAREST METER

THIS MAP COMPLIES WITH NATIONAL MAP ACCURACY STANDARDS

CONVERSION TABLE		DECLINATION DIAGRAM		ADJOINING MAPS		
Meters	Feet			1	2	3
2	6.5617					
4	13.1234			4	5	
6	19.6851					
8	26.2468			6	7	8
10	32.8084					
To convert meters to feet multiply by 3.2808		UTM grid convergence (GM) and 1984 magnetic declination (MD) at center of map Diagram is approximate		1 Buffalo 2 Gillette 3 Sundance 4 Kayence 5 Newcastle 6 Midwest 7 Bill 8 Lance Creek		
To convert feet to meters multiply by 0.3048						

FOR SALE BY U.S. GEOLOGICAL SURVEY
DENVER, COLORADO 80226, OR RESTON, VIRGINIA 22092

Topographic Map Symbols

Primary highway, hard surface	
Secondary highway, hard surface	
Light duty road, principal street, hard or improved surface	
Other road or street, real	
Route marker: Interstate; U.S.; State	
Railroad: standard gage; narrow gage	
Bridge: overpass; underpass	
Tunnel: road; railroad	
Built up area, locality, elevation	
Airport, landing field, landing strip	
National boundary	
State boundary	
County boundary	
National or State reservation boundary	
Land grant boundary	
U.S. public lands survey: range, township; section	
Range, township; section; protected	
Power transmission line; pipeline	
Dam; dam with lock	
Cemetery; building	
Windmill; water well; spring	
Mine shaft; adit or cave; mine, quarry; gravel pit	
Campground; picnic areas; U.S. location monument	
Ruins, cliff dwelling	
Distorted surface: strip mine, lava, sand	
Contours: index; intermediate; supplementary	
Bathymetric contours: index; intermediate	
Stream, lake: perennial; intermittent	
Rapids, large and small; falls, large and small	
Area to be submerged; marsh, swamp	
Land subject to controlled inundation; woodland	
Scrub; mangrove	
Orchard; vineyard	

A pamphlet describing topographic maps is available on request

USGS Library
Reston, VA.
Topo Archive

MAR 1993

RENO JUNCTION, WYOMING

43105-E1-TM-100

1974

• INTERIOR-GEOLOGICAL SURVEY, RESTON, VIRGINIA-1993

KILOMETERS 1 0 1 2 3 4 5 6 7 8 9 10 11 12 13 14 15 16 17 18 19 20
MILES 0 1 2 3 4 5 6 7 8 9 10 11 12 13 14 15 16 17 18 19 20
SCALE 1:100 000
1 CENTIMETER ON THE MAP REPRESENTS 1 KILOMETER ON THE GROUND
CONTOUR INTERVAL 20 METERS

1000 0 5000 10000 15000 20000 25000 30000 35000 40000 45000 50000 55000 60000 65000 70000 METERS
1000 0 5000 10000 15000 20000 25000 30000 35000 40000 45000 50000 55000 60000 65000 70000 FEET