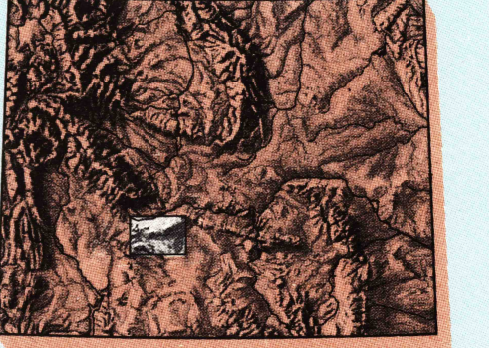


SOUTH PASS, WYOMING

30X60 MINUTE SERIES (TOPOGRAPHIC)

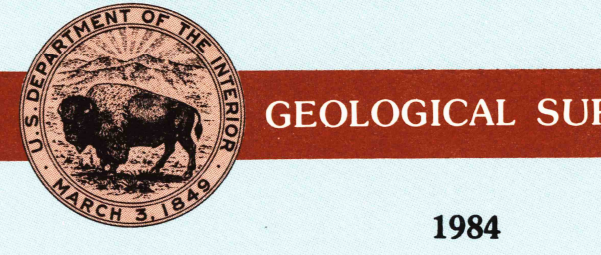
South Pass WYOMING

1:100 000-scale metric topographic map



30 X 60 MINUTE QUADRANGLE SHOWING

- Contours and elevations in meters
- Highways, roads and other manmade structures
- Water features
- Woodland areas
- Geographic names



Produced by the United States Geological Survey  
 Compiled from USGS 1:24 000 and 1:62 500-scale topographic maps dated 1951-1961. Partially revised from aerial photographs taken 1982 and other source data. Revised information not field checked.  
 Map edited 1984.  
 Projection used 10 000-meter grid, zone 12 Universal Transverse Mercator.  
 25 000-foot grid ticks based on Wyoming coordinate system, west central zone. 1927 North American Datum. To place on the predicted North American Datum 1983 move the projection lines 9 meters north and 55 meters east. There may be private inholdings within the boundaries of the National or State reservations shown on this map.

CONTOUR INTERVAL 20 METERS

NATIONAL GEODETIC DATUM OF 1929

THIS MAP COMPLIES WITH NATIONAL MAP ACCURACY STANDARDS

Meters	Feet
1	3.2808
2	6.5617
3	9.8425
4	13.1234
5	16.4042
6	19.6850
7	22.9659
8	26.2467
9	29.5275
10	32.8084

To convert meters to feet multiply by 3.2808  
 To convert feet to meters multiply by 0.3048

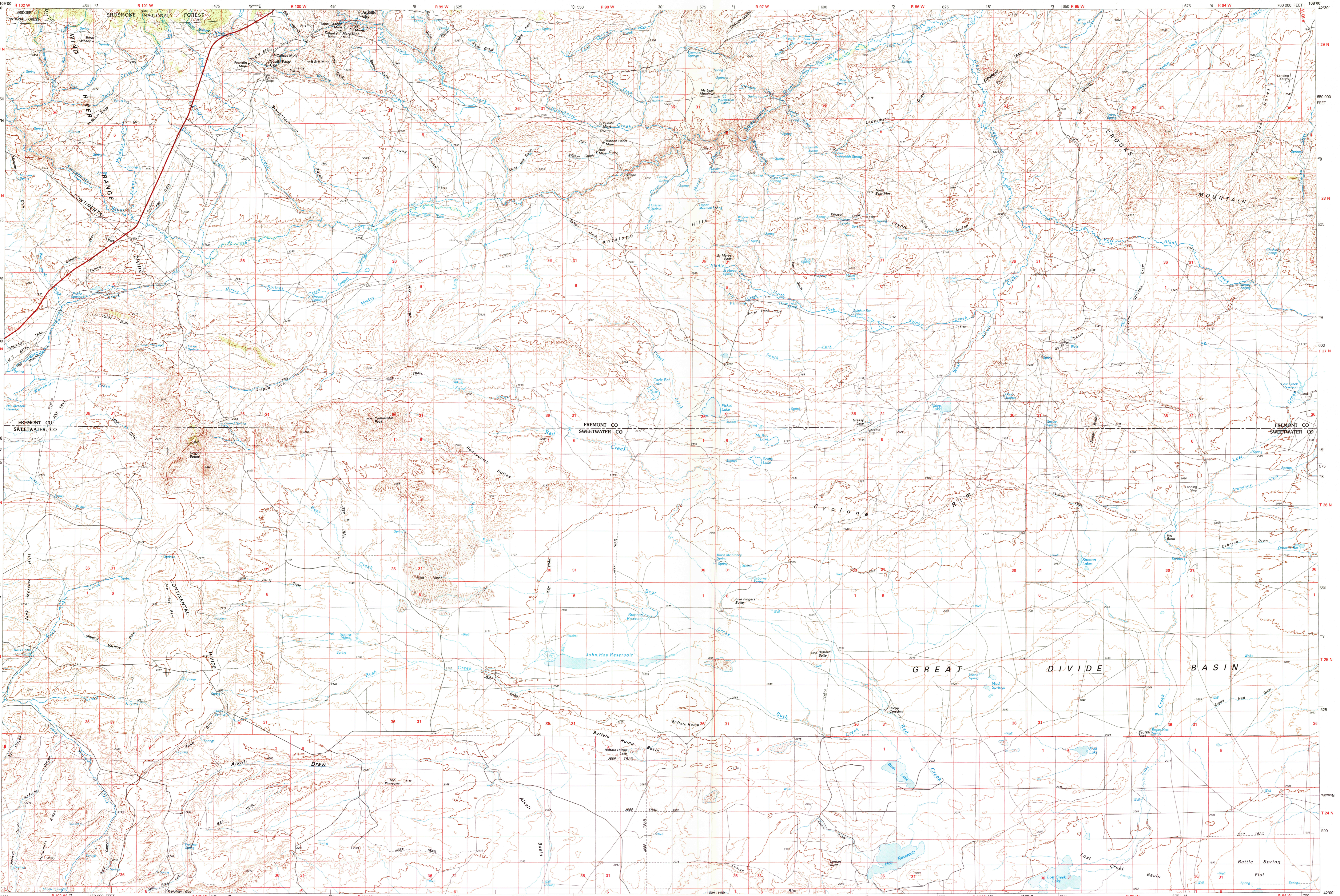
DECLINATION DIAGRAM  
 1°41' GN 249 MILS  
 LTM grid convergence (GN) and 1983 magnetic declination (MN) at center of map. Diagram is approximate.

ADJOINING MAPS	1	2	3
1	Pinedale		
2	Hartline-Hills		
3	Farrow		
4	Barlow		
5	Rock Springs		
6	Red Desert Basin		
7	Rawlins		

FOR SALE BY U. S. GEOLOGICAL SURVEY, DENVER, COLORADO 80225 OR RESTON, VIRGINIA 22092

Topographic Map Symbols

- Primary highway, hard surface
- Secondary highway, hard surface
- Light duty road, principal street, hard or improved surface
- Other road or street, trail
- Route marker: Interstate, U. S., State
- Railroad: standard gage, narrow gage
- Bridge: overpass, underpass
- Tunnel: road, railroad
- Built up area, locality, elevation
- Airport: landing field, landing strip
- National boundary
- State boundary
- County boundary
- National or State reservation boundary
- Land grant boundary
- U. S. public lands survey: range, township, section
- Range, township, section line: protracted
- Power transmission line, pipeline
- Dam: dam with lock
- Cemetery, building
- Windmill; water well; spring
- Mine shaft; adit or cave; mine, quarry; gravel pit
- Campground; picnic area; U. S. location monument
- Ruin; cliff dwelling
- Disturbed surface: strip mine, lava, sand
- Contours: index; intermediate; supplementary
- Bathymetric contours: index; intermediate
- Stream, lake: perennial; intermittent
- Rapids, large and small; falls, large and small
- Area to be submerged; marsh, swamp
- Land subject to controlled inundation; woodland
- Scrub; mangrove
- Orchard; vineyard



SCALE 1:100 000  
 1 CENTIMETER ON THE MAP REPRESENTS 1 KILOMETER ON THE GROUND  
 CONTOUR INTERVAL 20 METERS

KILOMETERS 0 1 2 3 4 5 6 7 8 9 10 11 12 13 14 15 16 17 18 19 20  
 MILES 0 1 2 3 4 5 6 7 8 9 10 11 12 13

5000 10000 20000 30000 40000 50000 60000 70000 FEET

SOUTH PASS, WYOMING 42108-A1-TM-100