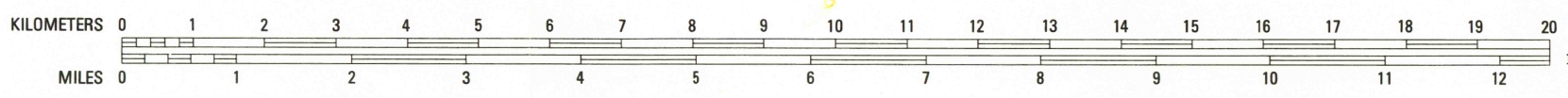
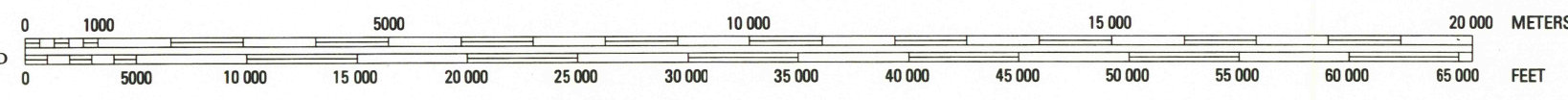


• INTERIOR—GEOLOGICAL SURVEY, RESTON, VIRGINIA—1979



SCALE 1:100 000
1 CENTIMETER ON THE MAP REPRESENTS 1 KILOMETER ON THE GROUND
CONTOUR INTERVAL 20 METERS



WORLAND, WYOMING
N4400—W10700/30x60

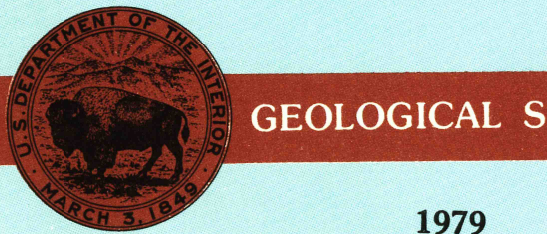
1979

1:100 000-scale metric
topographic map of
Worland
WYOMING



30 X 60 MINUTE QUADRANGLE
SHOWING

- Contours and elevations in meters
- Highways, roads and other manmade structures
- Water features
- Woodland areas
- Geographic names



Produced by the United States Geological Survey
in cooperation with the Bureau of Land Management

Compiled from USGS 1:24 000-scale topographic maps dated 1960–1967. Partially revised from aerial photographs taken 1976 and other source data. Revised information not field checked. Map edited 1979

Projection and 10 000-meter grid, zone 13:
Universal Transverse Mercator
25 000-foot grid ticks based on Wyoming coordinate system, east central zone, 1927 North American datum
To place on the predicted North American Datum 1983 move the projection lines 8 meters north and 51 meters east

Where omitted, land lines have not been established or are not shown in areas of extensive tract surveys
There may be private inholdings within the boundaries of the National or State reservations shown on this map

CONTOUR INTERVAL 20 METERS
NATIONAL GEODETIC VERTICAL DATUM OF 1929

THIS MAP COMPLIES WITH NATIONAL MAP ACCURACY STANDARDS

CONVERSION TABLE		DECLINATION DIAGRAM	ADJOINING MAPS			
Meters	Feet		1	2	3	4
2	6.5617		1	2	3	4
4	13.1234		4	4	5	
6	19.6851		6	7	8	
8	26.2468					
10	32.8084					
To convert meters to feet multiply by 3.2808						
To convert feet to meters multiply by 0.3048						
UTM grid convergence multiply by 3.2808						
To convert feet to meters multiply by 0.3048						
To convert feet to meters multiply by 0.3048						

FOR SALE BY U. S. GEOLOGICAL SURVEY, DENVER, COLORADO 80225
OR RESTON, VIRGINIA 22092

Topographic Map Symbols

Primary highway, hard surface
Secondary highway, hard surface
Light duty road, principal street, hard or improved surface
Other road or street; trail
Route marker: Interstate, U. S., State
Railroad, standard gage, narrow gage
Bridge; overpass; underpass
Tunnel; road, railroad
Built up area, locality, elevation
Airport; landing field; landing strip
National boundary
State boundary
County boundary
National or State reservation boundary
Land grant boundary
U. S. public lands survey: range, township, section
Range, township, section line: protracted, section
Power transmission line; pipeline
Dam, dam with lock
Cemetery; building
Windmill; water well; spring
Mine shaft; adit or cave; mine, quarry; gravel pit
Campground; picnic area; U. S. location monument
Ruin; cliff dwelling
Distorted surface: strip mine, lava, sand
Contours: index; intermediate; supplementary
Bathymetric contours: index; intermediate
Stream, lake; perennial; intermittent
Rapids, large and small; falls, large and small
Area to be submerged; marsh, swamp
Land subject to controlled inundation; woodland
Sand; mangrove
Drainage; viewpoint

A pamphlet describing topographic maps is available on request

