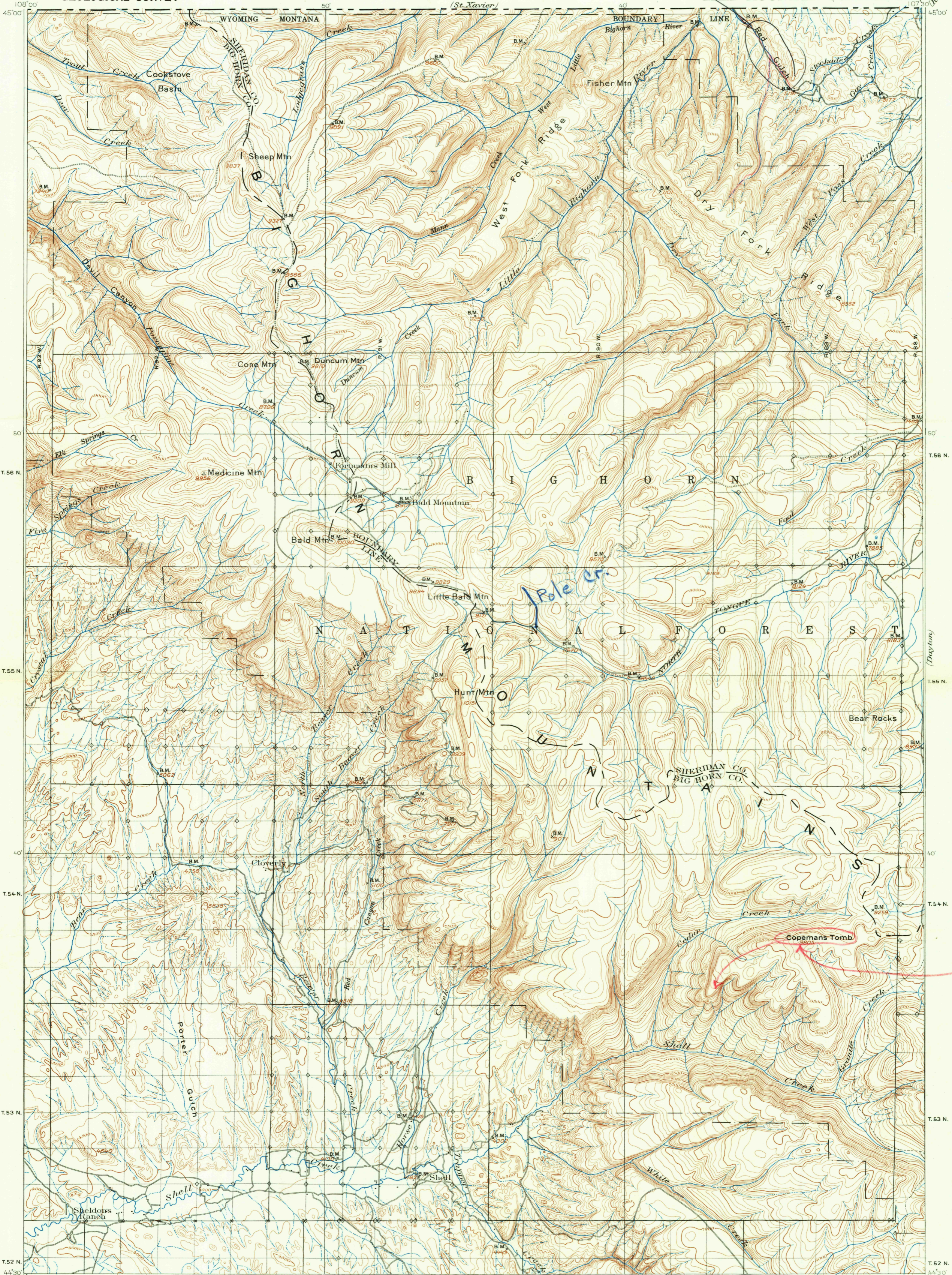


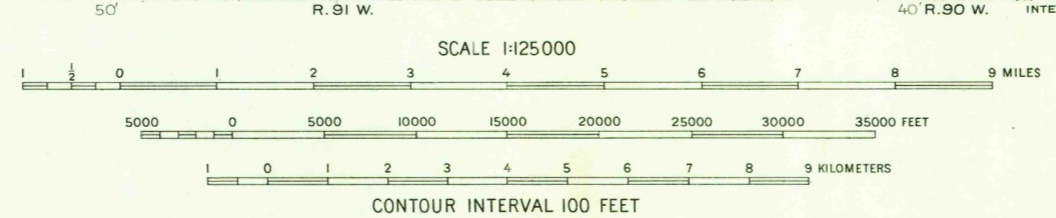
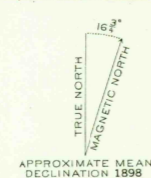
Red Canyon Creek

WYOMING

BALD MOUNTAIN QUADRANGLE



E. M. Douglas, Geographer in charge.
Triangulation by W. S. Post.
Topography by Frank Tweedy,
Surveyed in 1898.



INTERIOR—GEOLOGICAL SURVEY, WASHINGTON, D. C.—1963
MR4649
Polyconic projection. To place on 1927 North American datum
move projection lines 380 feet north and 300 feet east

DIAGRAM OF TOWNSHIP

6	5	4	3	2	1
7	8	9	10	11	12
13	14	15	16	17	18
19	20	21	22	23	24
25	26	27	28	29	30
31	32	33	34	35	36

BALD MOUNTAIN, WYO.
N4430—W10730/30
1898

(Readjustment indicates that elevations on this map should be increased 11 feet)