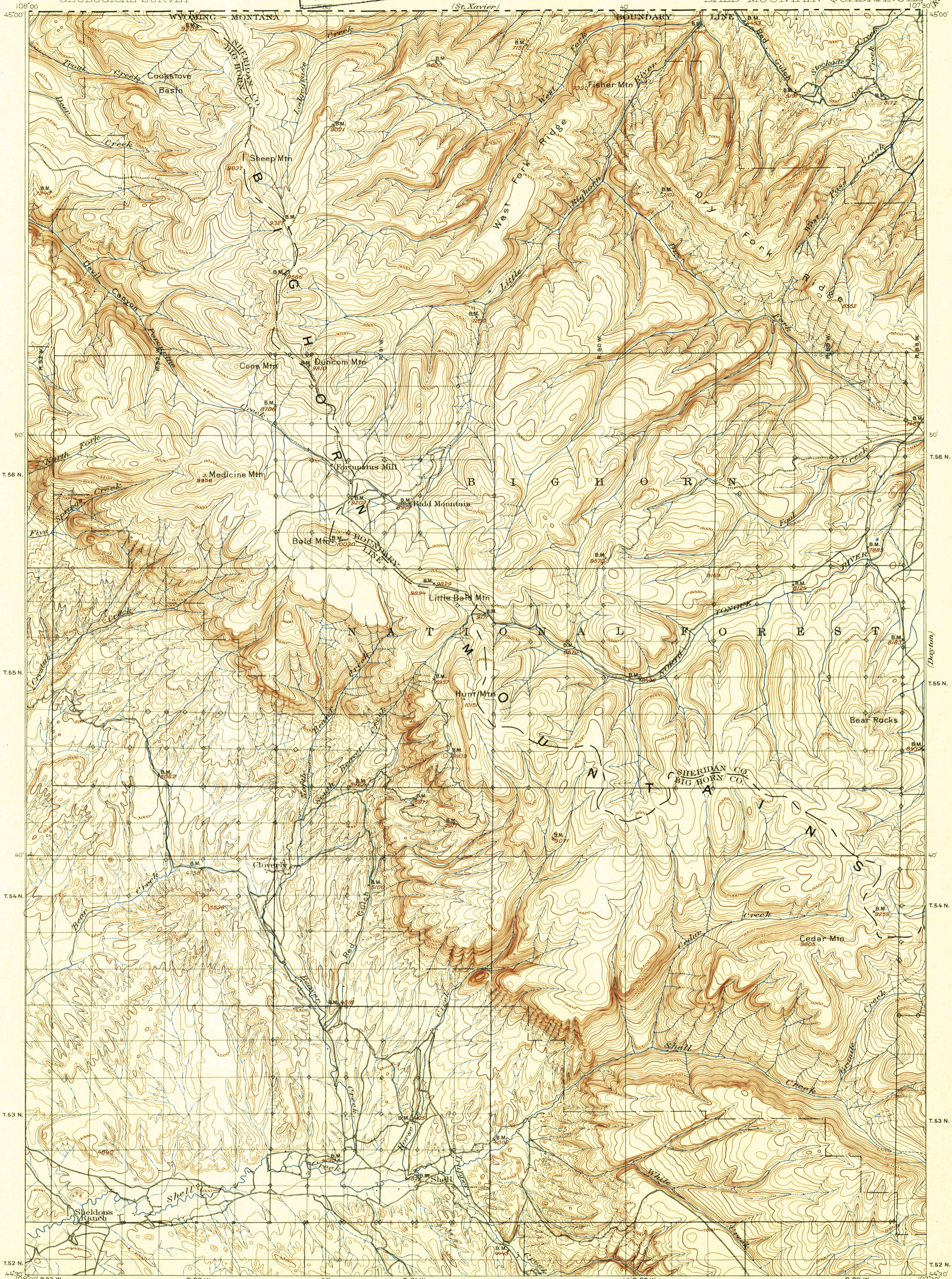
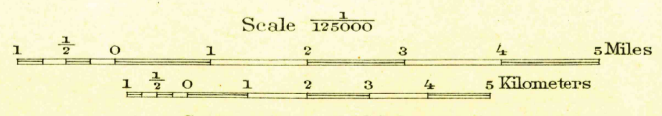
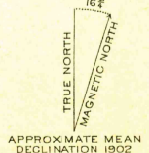


U. S. G. S.
FILE COPY
Inspection and Editing.



E. M. Douglas, Geographer in charge.
Triangulation by W. S. Post.
Topography by Frank Tweedy.
Surveyed in 1898.



Scale 1:25000
Miles
Kilometers
Contour interval 100 feet.
Datum is mean sea level.
(Readjustment indicates that elevations on this map should be increased 11 feet.)

Edition of 1901, reprinted 1943
Polyconic projection.

WYO.
BALD MOUNTAIN

N4430-W10730/30
JUN 25 1943

U. S. G. S.
FILE COPY
Inspection and Editing.