

YELLOWSTONE NAT. PARK (SOUTH ENTRANCE) 112 MI.
JACKSON 57 MI.

ROCK SPRINGS (JUNC. U.S. ROUTE NO. 30) 107 MI.
PINEDALE 7 MI.

U.S.G.S.
FILE COPY
TOPOGRAPHIC DIVISION

RETURN TO:
USGS AND HISTORICAL MAP ARCHIVES

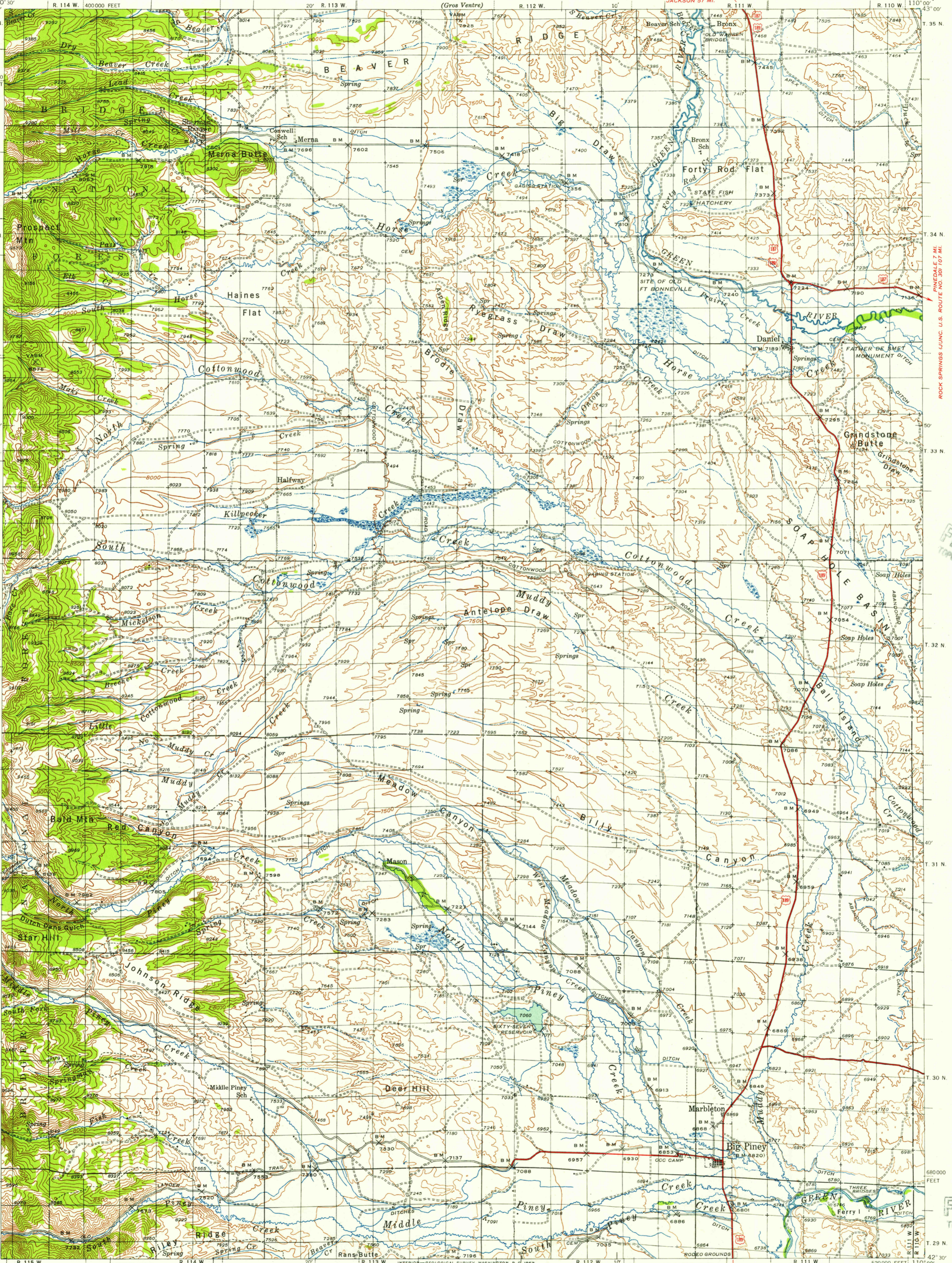
U.S.G.S.
FILE COPY
TOPOGRAPHIC DIVISION

BIG PINEY, WYO.

1939

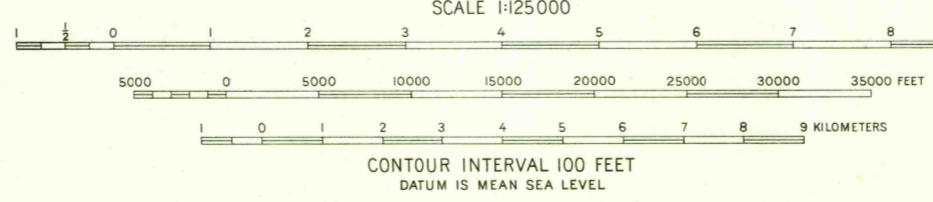
AUG - 5 195

2085



Topography by J. L. Lewis, D. H. Rutledge,
L. O. Newsome, F. H. Purdy, J. H. Fredericks,
M. K. Meyers, K. A. Phillips, C. P. Van Camp,
F. M. Jensen, Robert Jones, and
Bert Sweigart
Surveyed in 1935, 1938, and 1939

APPROXIMATE MEAN
DECLINATION 1939



CONTOUR INTERVAL 100 FEET
DATUM IS MEAN SEA LEVEL

ROAD CLASSIFICATION

Heavy-duty	Light-duty
Medium-duty	Unimproved dirt
U.S. Route	State Route

Polyconic projection. 1927 North American datum
5000 yard grid based on U. S. zone system, F
20000 foot grid based on Wyoming (West)
rectangular coordinate system

FOR SALE BY U. S. GEOLOGICAL SURVEY, DENVER 2, COLORADO OR WASHINGTON 25, D. C.
A FOLDER DESCRIBING TOPOGRAPHIC MAPS AND SYMBOLS IS AVAILABLE ON REQUEST