

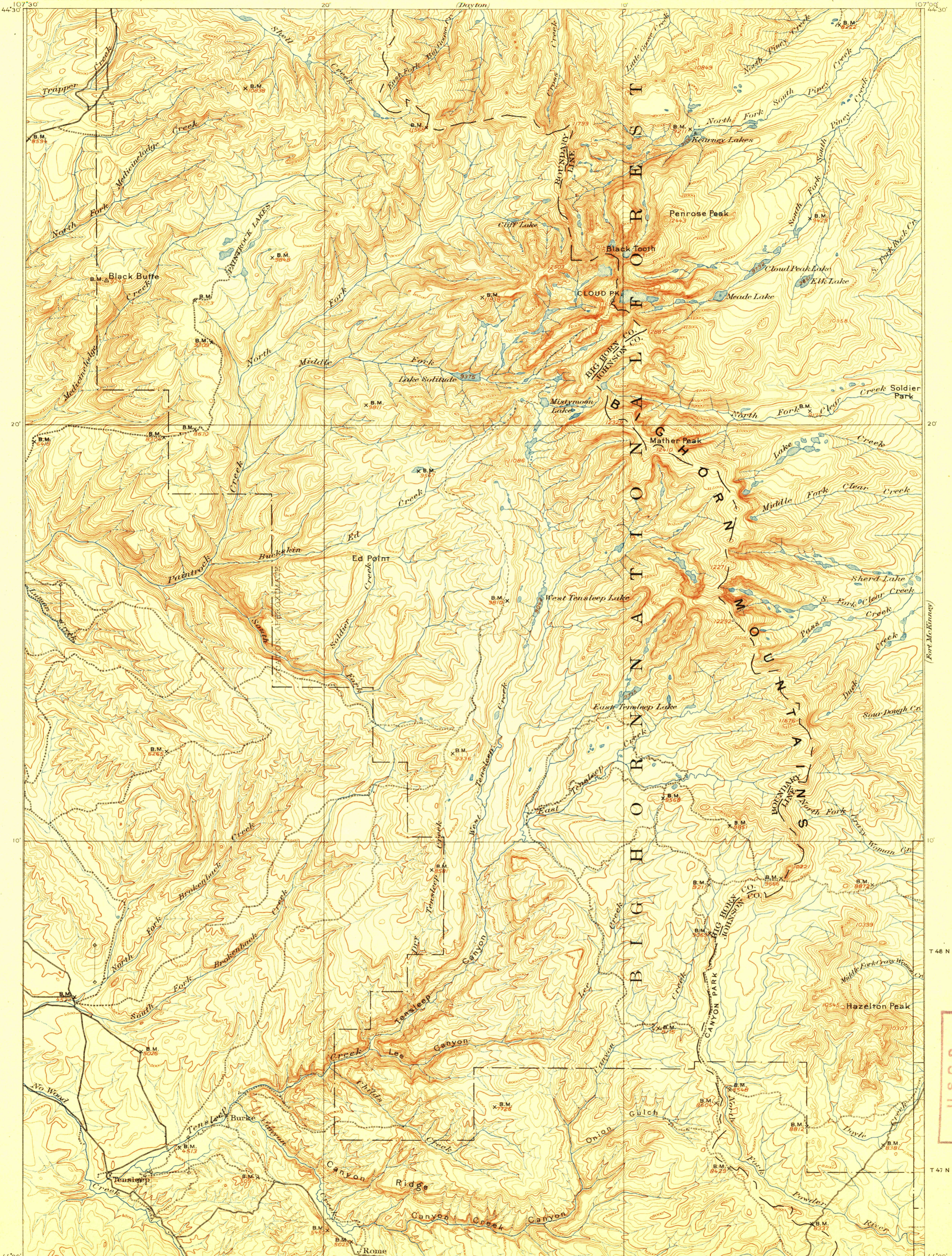
(Bad Mountain)

DEPARTMENT OF THE INTERIOR
FRANKLIN K. LANE, SECRETARY
U.S. GEOLOGICAL SURVEY
GEORGE OTIS SMITH, DIRECTOR

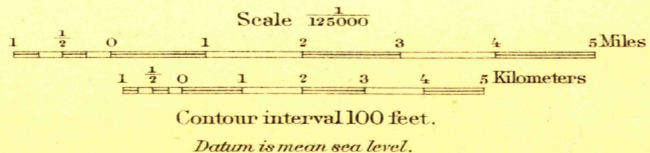
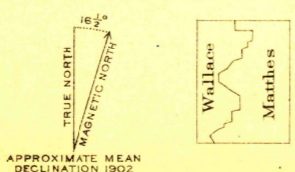
TOPOGRAPHY

WYOMING
CLOUD PEAK QUADRANGLE

(Sheridan)



ENGRAVED NOV. 1900 BY U.S.G.S.
E. M. Douglas, Geographer in charge.
Triangulation by T. M. Bannon.
Topography by H. S. Wallace and F. E. Matthes.
Surveyed in 1897-99.



Edition of May 1901, reprinted 1917

JAN 31 1917 2575

CLOUD PEAK

U.S.G.S.
FILE COPY
Ed. Div. Topographic Maps.

RETURN TO:
USGS AND HISTORICAL MAP ARCHIVES