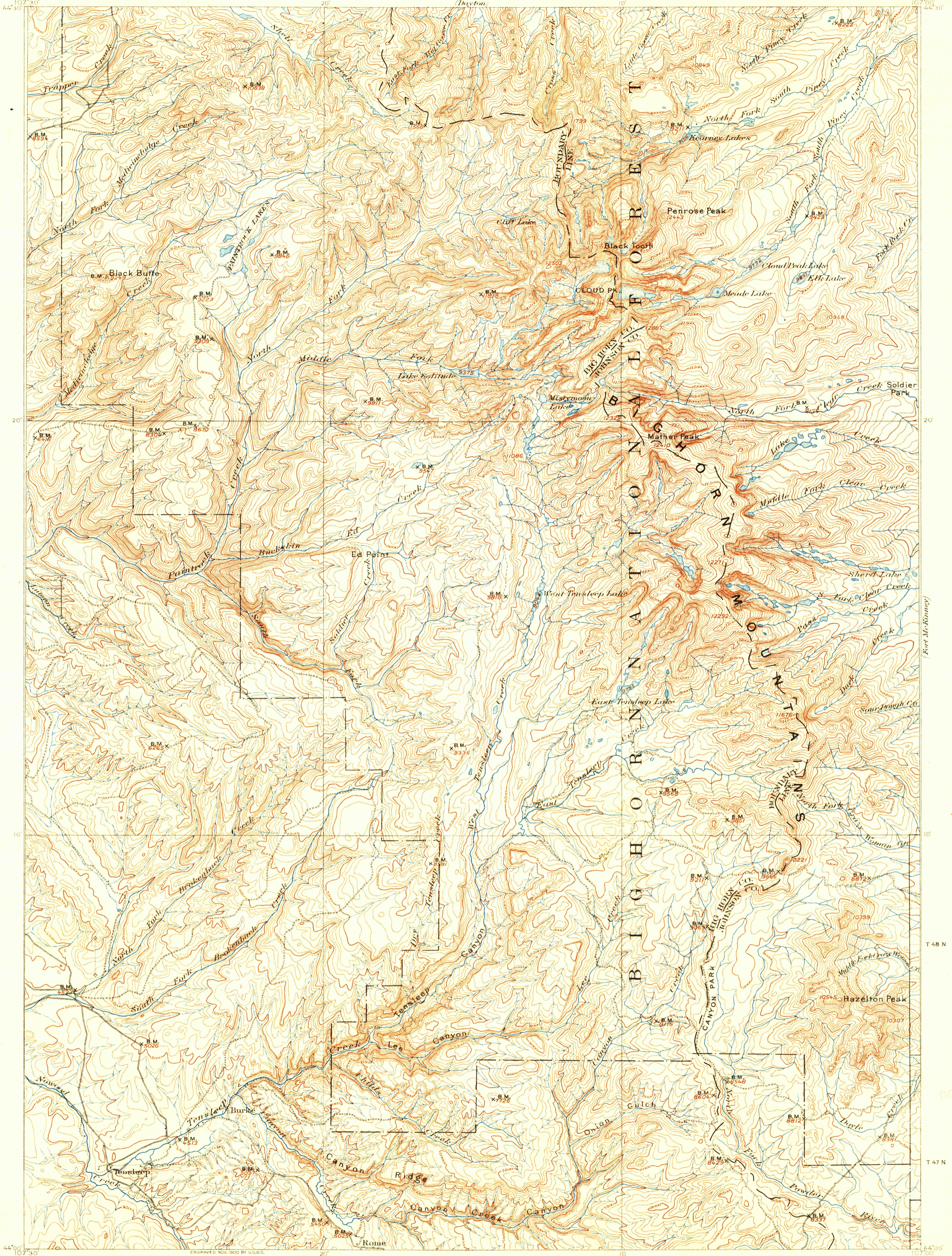


(Sheridan)

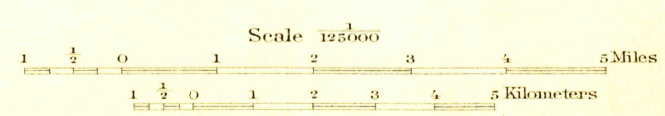
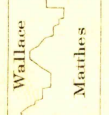
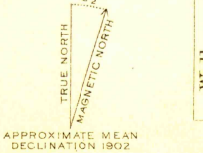


U.S. GEOLOGICAL SURVEY
FILE COPY
Inspection and Storage

U.S. GEOLOGICAL SURVEY
FILE COPY
Inspection and Storage

E. M. Douglas, Geographer in charge.
Triangulation by T. M. Bannon.
Topography by H. S. Wallace and F. E. Matthes.
Surveyed in 1897-99.

ENGRAVED NOV. 1900 BY U.S.G.S.



Contour interval 100 feet.
Datum is mean sea level.

(Readjustment indicates that elevations on this map should be increased 10 feet.)

Edition of May 1901, reprinted 1925.
Polyconic projection. To place on North American datum move projection lines 300 feet north and 300 feet east.

CLOUD PEAK, WYO.

DEC 14 1905 (2100)

RETURN TO 3
U.S. GEOLOGICAL SURVEY
WASHINGTON, D.C.