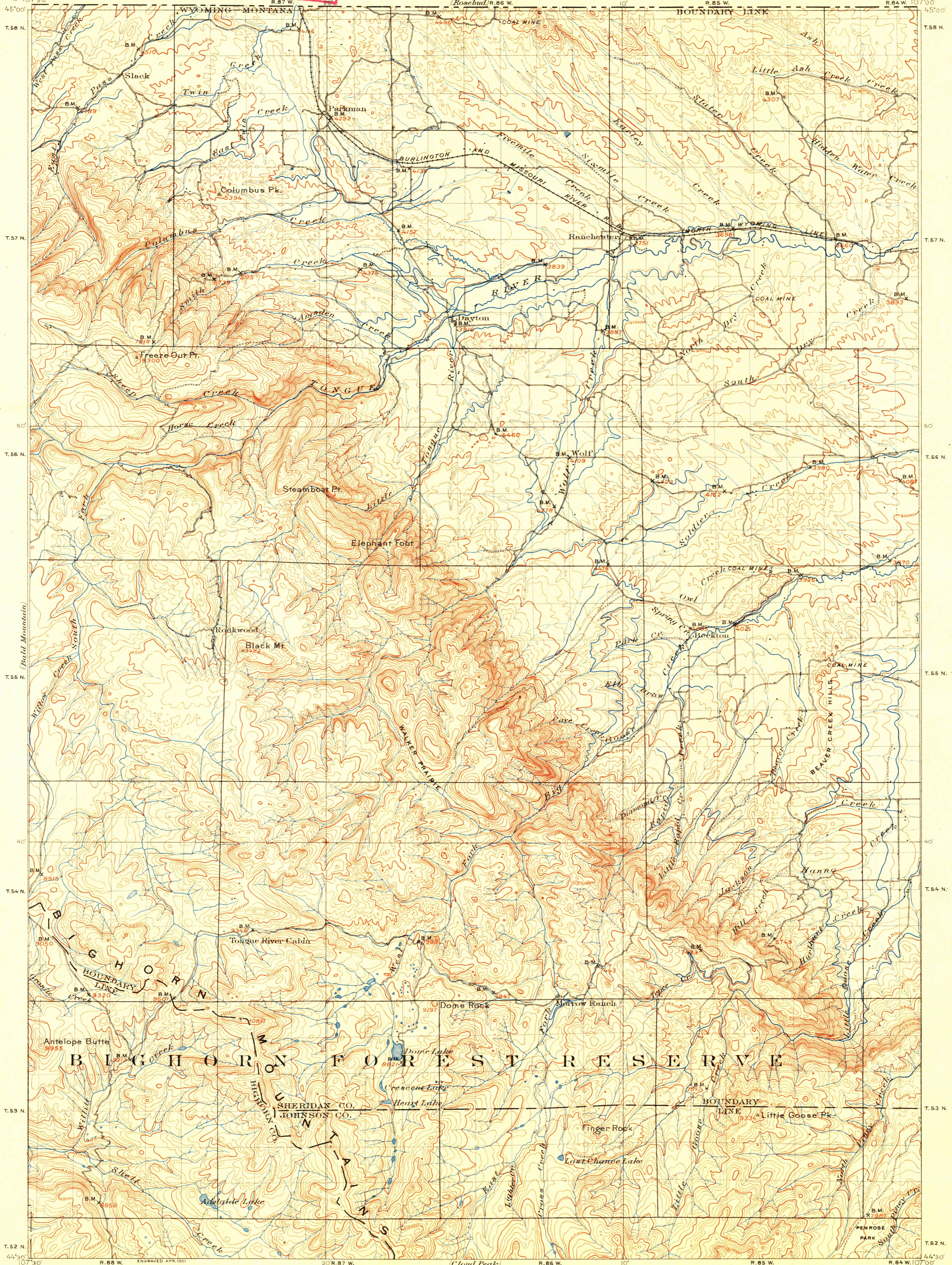


U. S. G. S.
FILE COPY
Ed. Div. Topographic Maps.

U.S. GEOLOGICAL SURVEY
CHARLES D. WALCOTT, DIRECTOR

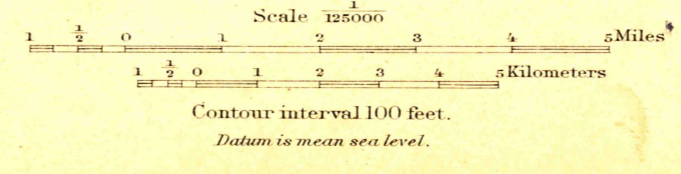
TOPOGRAPHIC SHEET

WYOMING
DAYTON QUADRANGLE



E.M. Douglas, Geographer in charge.
Triangulation by W.S. Post.
Topography by Frank Tweedy.
Surveyed in 1899.

U. S. G. S.
FILE COPY
Ed. Div. Topographic Maps.



U.S. Geological Survey,
JUN 17 1901 2494
Ed. Div. Topographic Maps.
DAYTON, Wyo

RETURN TO:
USGS AND HISTORICAL MAP ARCHIVES