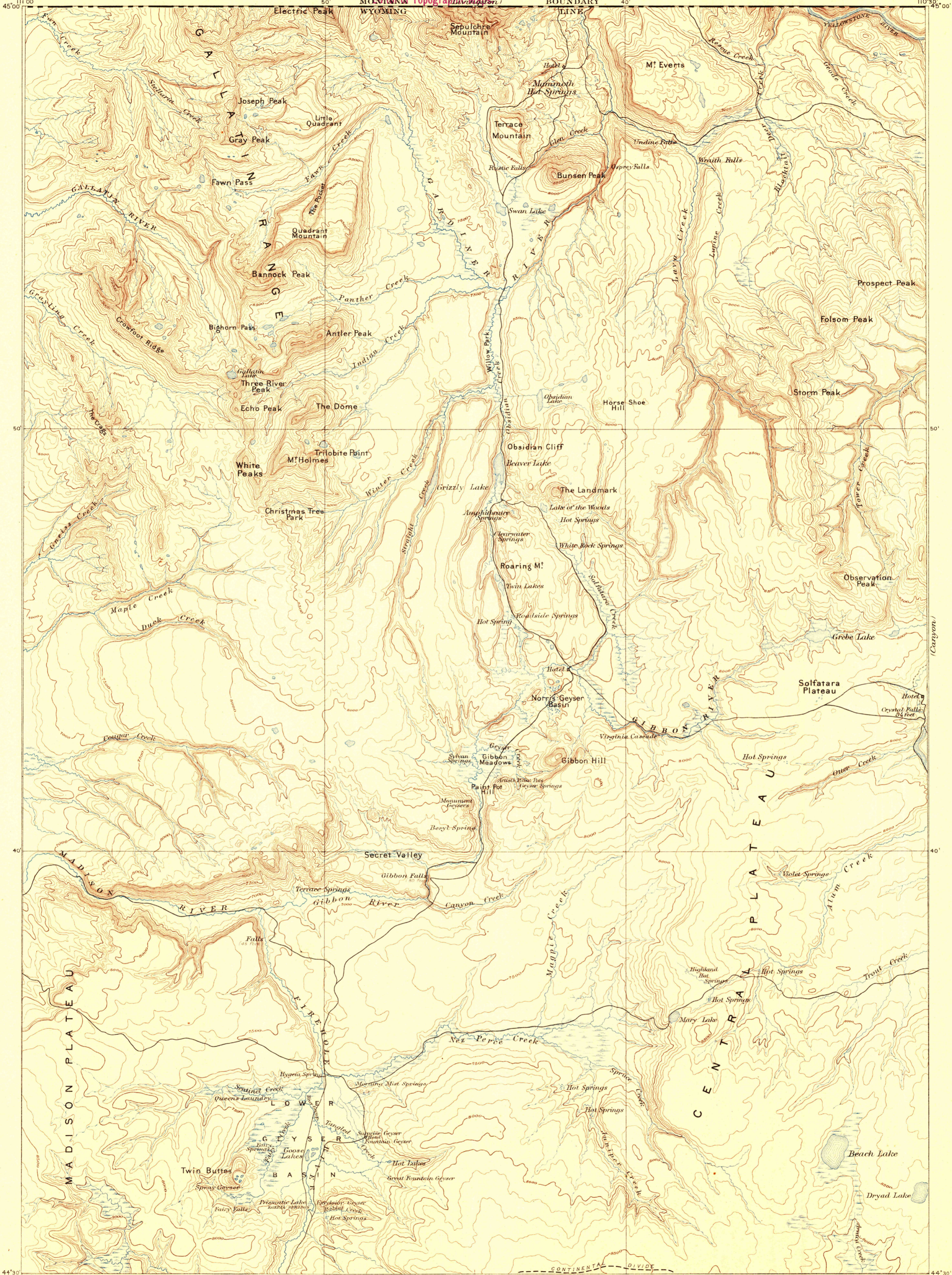


U.S. GEOLOGICAL SURVEY.  
CHARLES D. WALCOTT, DIRECTOR.

Section of Topographic Maps



Henry Gannett, Chief Geographer.  
J. H. Renshaw, Geographer in charge.  
Triangulation by H. S. Chase.  
Topography by J. H. Renshaw, Frank Tweedy,  
H. S. Chase and S. A. Applin, Jr.  
Surveyed in 1883-4-5.

Scale 125,000  
1 1/2 0 1 2 3 4 5 Miles  
1 1/2 0 1 2 3 4 5 Kilometers  
Contour Interval 100 feet  
Datum's mean Sea level

ENGRAVED SEP. 1886 BY J. R. IEN & CO.  
Edition of June 1895.  
600.

FILE COPY  
Ed. Div. Topographic Maps.

RETURN TO:  
USGS AND HISTORICAL MAP ARCHIVES

GALLATIN