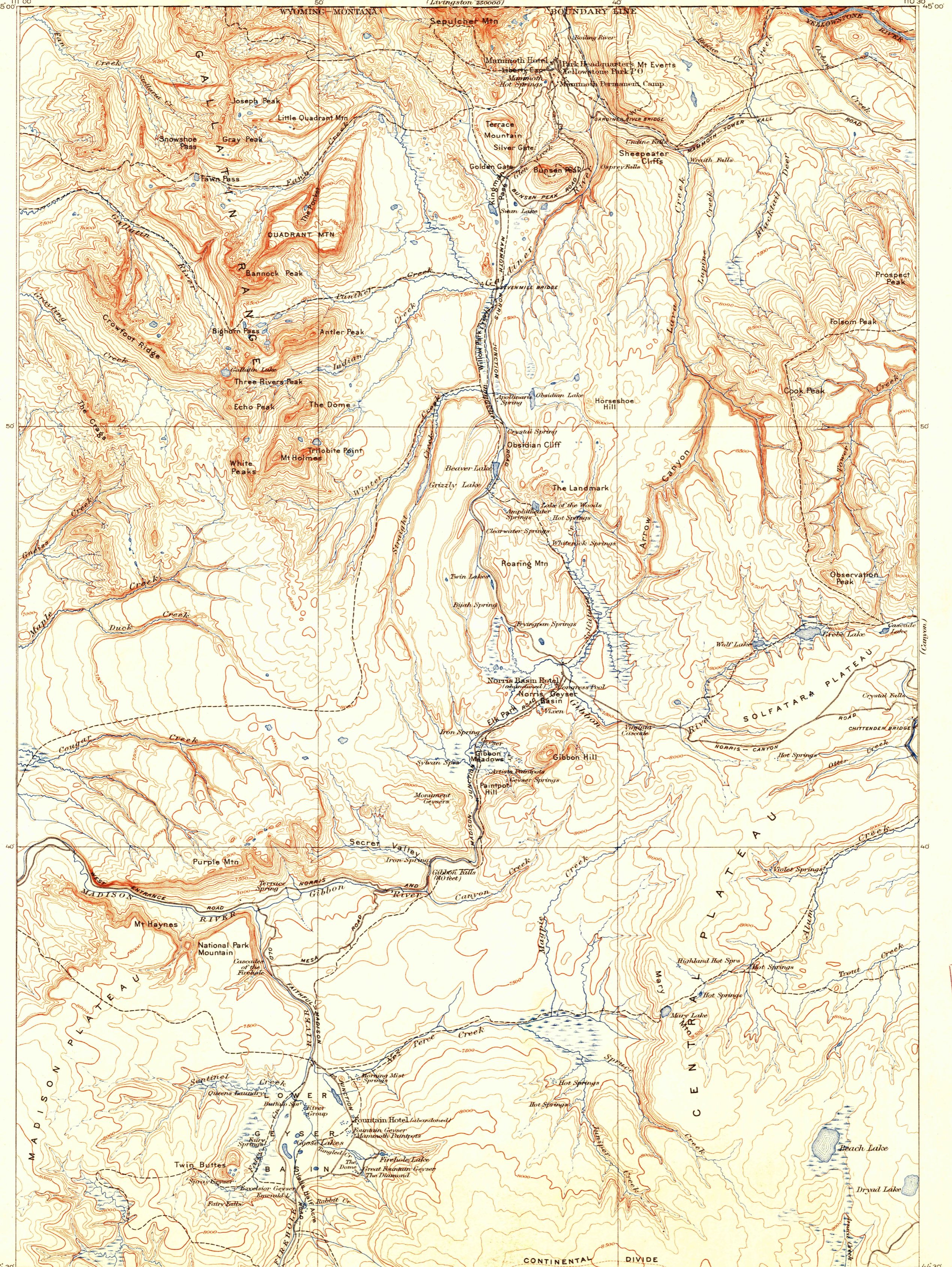


U. S. G. S.
FILE COPY
Inspection and Editing.

WYOMING
(YELLOWSTONE NATIONAL PARK)
GALLATIN QUADRANGLE
(Livingston 22000)

DEPARTMENT OF THE INTERIOR
U.S. GEOLOGICAL SURVEY



Henry Gannett, Chief Geographer.
J.H. Renshaw, Geographer in charge.
Triangulation by H.S. Chase.
Topography by J.H. Renshaw, Frank Tweedy,
H.S. Chase, and S.A. Aplin, Jr.
Surveyed 1883-85.
Partial revision in 1910 by E.P. Davis.

Scale
SAA
HSC
F.T.

Scale 1:25000
0 1 2 3 4 5 Miles
0 1 2 3 4 5 Kilometers
Contour interval 100 feet.
Datum is mean sea level.

Edition of Sept. 1911, reprinted 1928.
Polyconic projection.

U. S. G. S. USGS
FILE COPY
Inspection and Editing.

GALLATIN, WYO.
JUL 20 1928 (2885)

RETURN TO:
USGS AND HISTORICAL MAP ARCHIVES

U. S. G. S.
FILE COPY
Inspection and Editing.