

TOPOGRAPHIC SHEET

WYOMING-NEBRASKA
GOSHEN HOLE QUADRANGLE

U.S. GEOLOGICAL SURVEY
CHARLES D. WALCOTT, DIRECTOR

CONVENTIONAL SIGNS

CULTURE
(printed in black)

- Roads and buildings
- Private and secondary roads
- Trails
- Railroads
- Street railroads
- Tunnels
- Bridges
- Ferries
- Fords
- Dams
- Locks
- T.S. township and section lines
- Located township and section corners
- Township and section corners not found
- Triangulation stations
- Bench marks
- Mines and quarries
- Prospects
- Shafts
- Mine tunnels (showing direction)
- Mine tunnels (direction unknown)

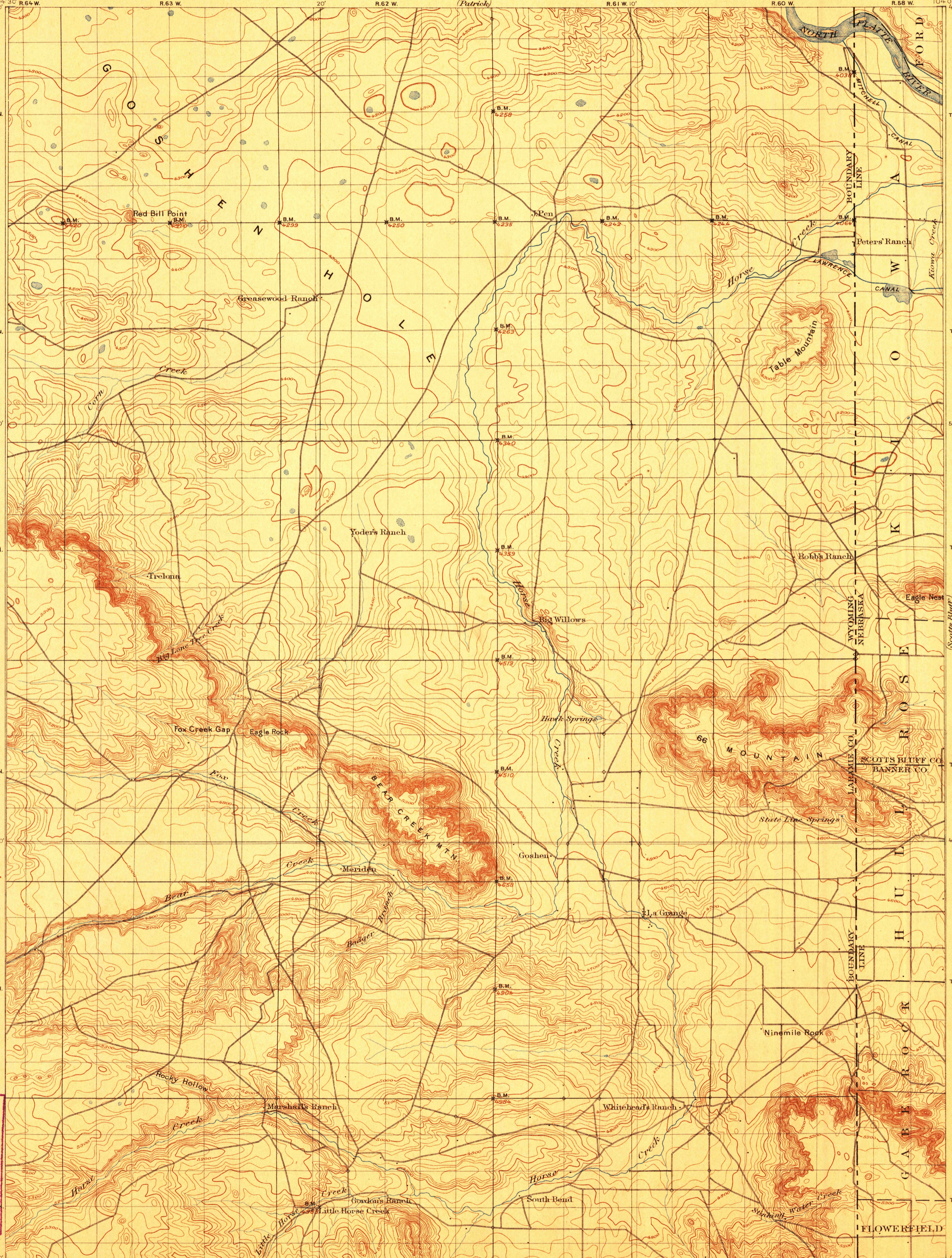
CONVENTIONAL SIGNS

RELIEF
(printed in brown)

- Figures (showing heights above mean sea level instrumentally determined)
- Contours (showing height above sea horizontal form and steepness of slope of the surface)
- Depression contours
- Levees
- Cliffs
- Mine dumps
- DRAINAGE (printed in blue)
- Streams
- Falls and rapids
- Intermittent streams
- Canals and ditches
- Lakes and ponds
- Intermittent lakes
- Glaciers
- Springs
- Salt marshes
- Fresh marshes
- Tidal flats

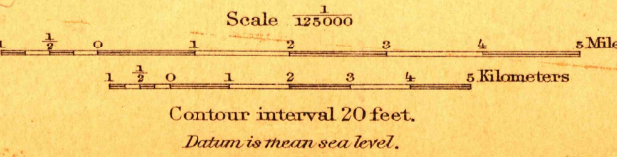
The above signs are in current use on the topographic maps. Variations from this usage appear in some maps of earlier dates.

U.S. GEOLOGICAL SURVEY
GOSHEN HOLE QUADRANGLE
REVISION 1.0
USGS AND HISTORICAL MAP ARCHIVES



U.S. G.S.
FILE COPY
Ed. Div. Topographic Maps.

Henry Gannett, Chief Topographer.
Jno. H. Renshaw, Topographer in charge.
Topography by W.S. Post and H.B. Blair.
Surveyed in 1895.



June 10-1899
2124

Edition of April 1899.

GOSHEN HOLE

U.S. G.S.
FILE COPY