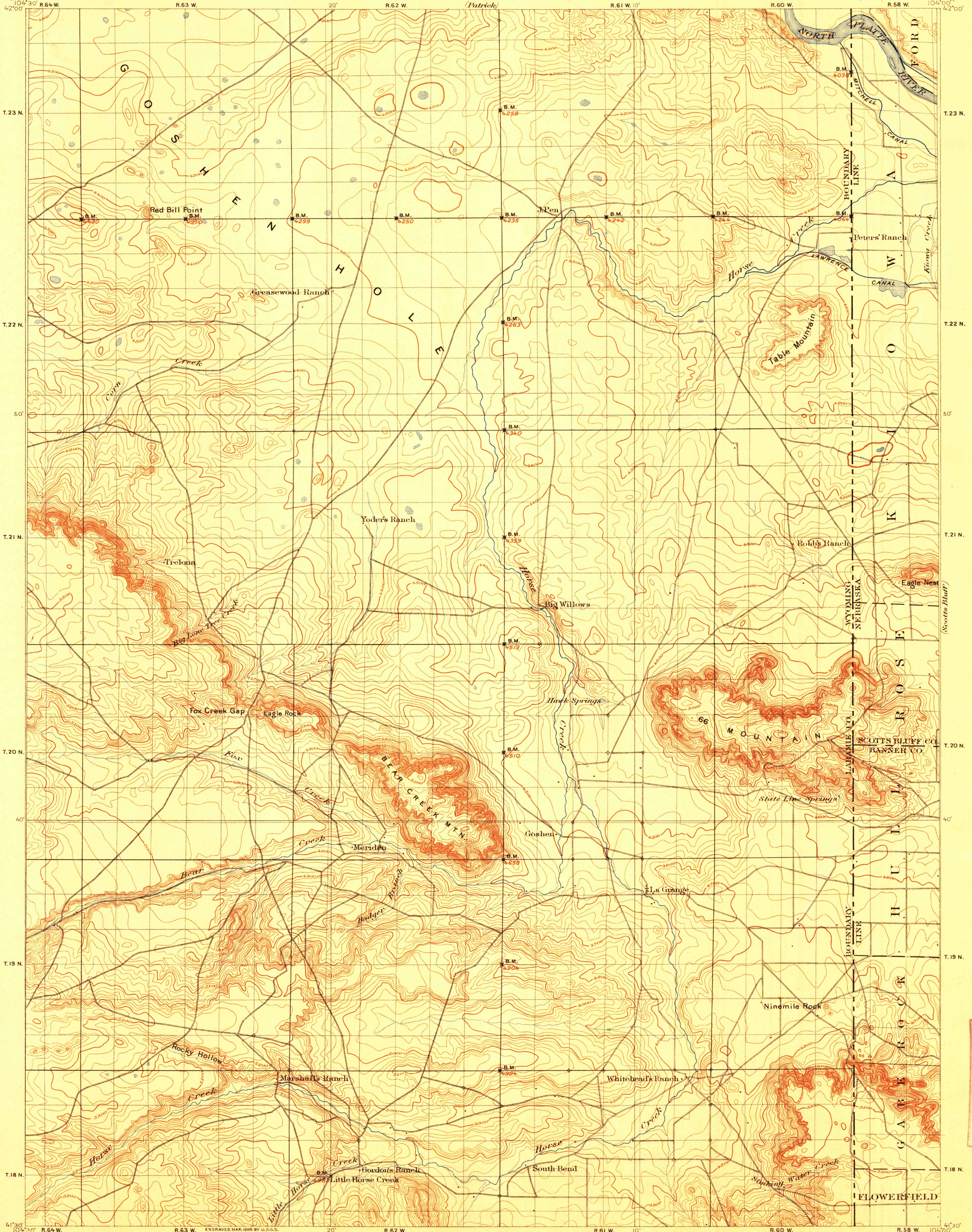
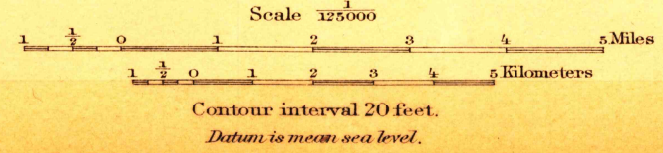


TOPOGRAPHY



Henry Gannett, Chief Topographer.
Jno. H. Renshawe, Topographer in charge.
Topography by W.S. Post and H.B. Blair.
Surveyed in 1895.



Edition of April 1899, reprinted 1916.

JAN 9 1 1917 2130

GOSHEN HOLE

RETURN TO:
USGS AND HISTORICAL MAP ARCHIVES

U.S.G.S.
FILE COPY
Ed. Div. Topographic Maps.