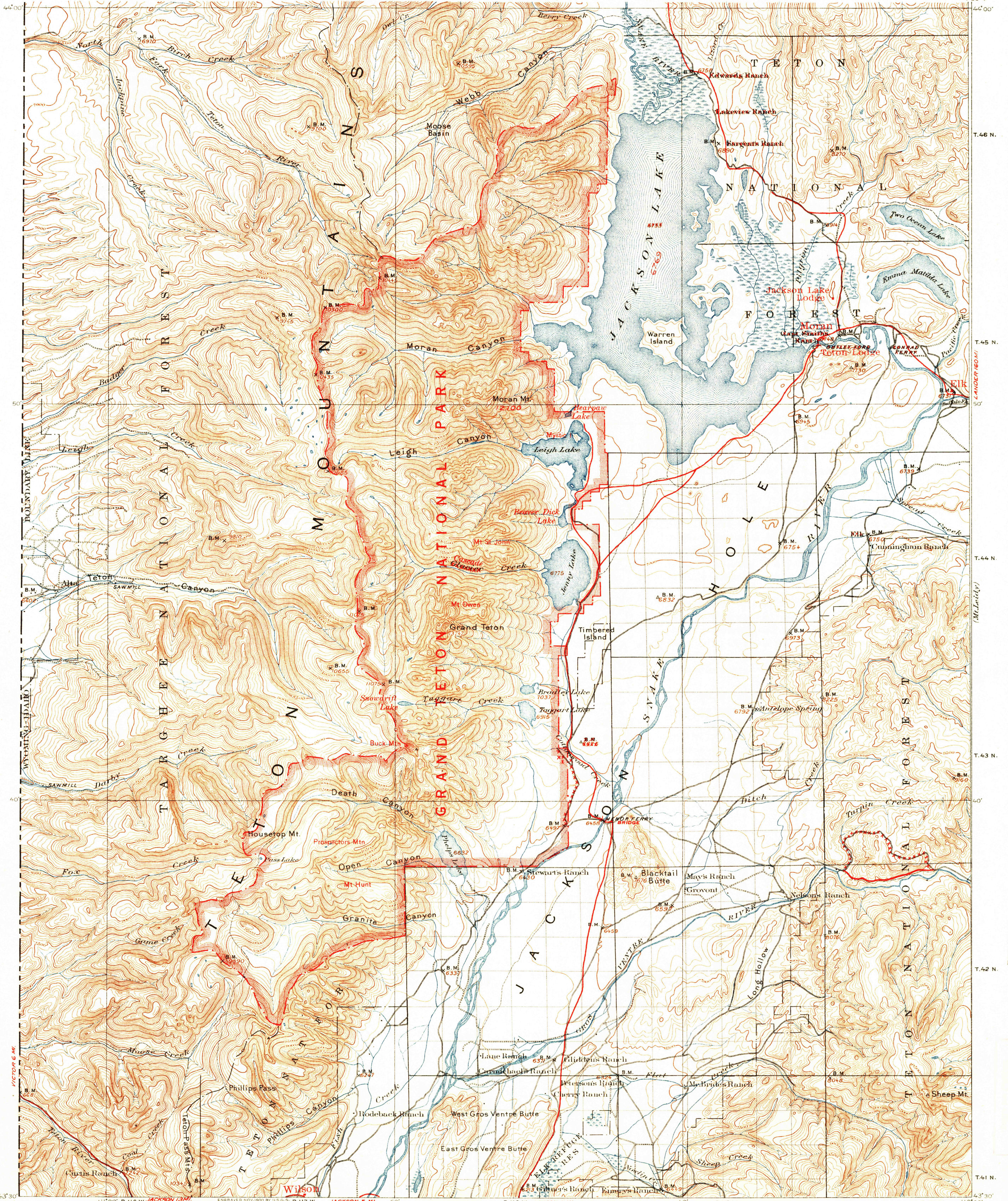


GRAND TETON NATIONAL PARK

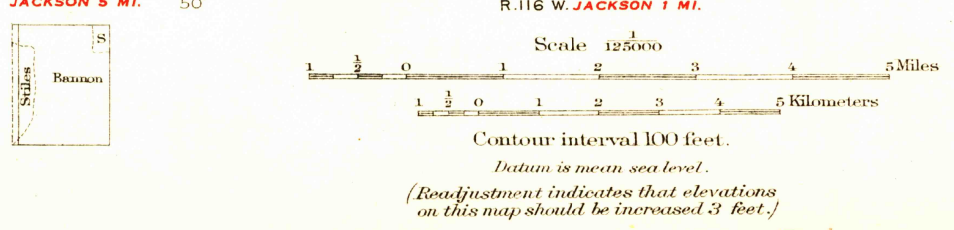
WYOMING
(TETON COUNTY)
GRAND TETON QUADRANGLE

DEPARTMENT OF THE INTERIOR
U.S. GEOLOGICAL SURVEY



111°00' R.118 W. JACKSON 13 MI. ENGRAVED NOV. 1900 BY U.S.G.S. R.117 W. JACKSON 5 MI. R.116 W. JACKSON 1 MI. R.115 W. R.114 W. 110°30'

E. M. Douglas, Geographer in charge.
Triangulation by T. M. Bannon.
Topography by T. M. Bannon and Arthur Stiles.
Surveyed in 1899.



Main roads, names, and other information shown in red added by National Park Service, 1931.

Edition of April 1901, reprinted 1931
Polyconic projection.

WYO.
GRAND TETON

RETURN TO:
USGS AND HISTORICAL MAP ARCHIVES

Tide gauge station (1885) 1885