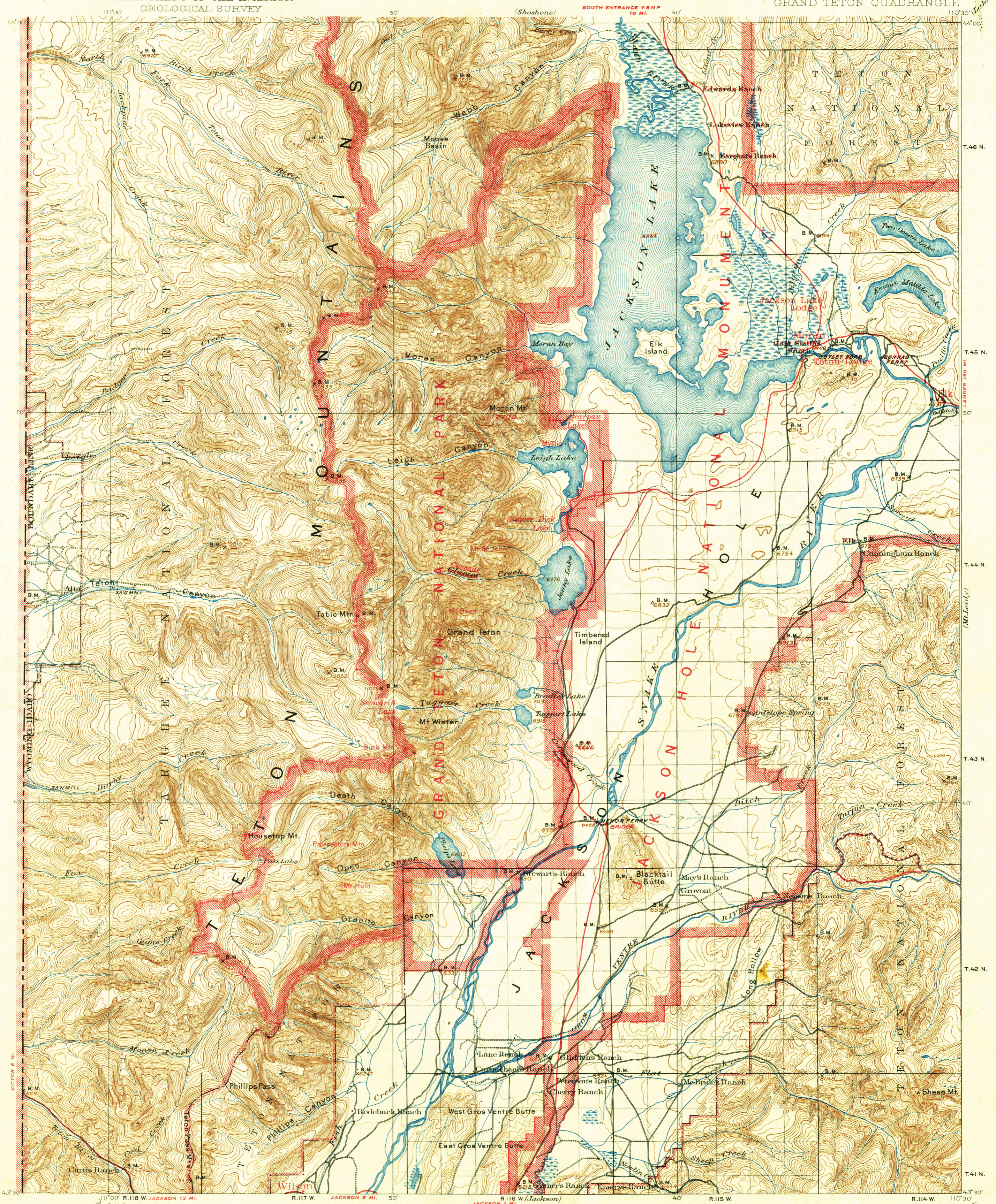


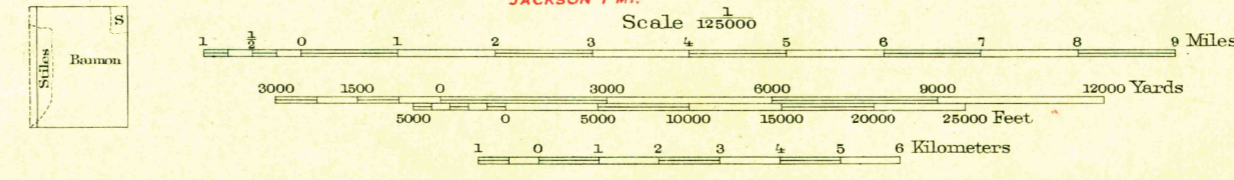
U. S. G. S.
FILE COPY
Inspection and Editing.

UNITED STATES
DEPARTMENT OF THE INTERIOR
GEOLOGICAL SURVEY

WYOMING
(TETON COUNTY)
GRAND TETON QUADRANGLE



111°00' R.118 W. JACKSON 13 MI.
E.M. Douglas, Geographer in charge.
Triangulation by T.M. Bannon.
Topography by T.M. Bannon and Arthur Stiles.
Surveyed in 1899.



Edition of April 1901, reprinted 1946
Polyconic projection.

Main roads, names, and other information shown in red added by National Park Service, 1945

Map of the Grand Teton National Park, scale 1:62500, from a later and more detailed survey covering the park and adjacent areas, is available

WYO.
GRAND TETON
N4330-W11030/30

U. S. G. S.
FILE COPY
Inspection and Editing.

RETURN TO:
USGS AND HISTORICAL MAP ARCHIVES